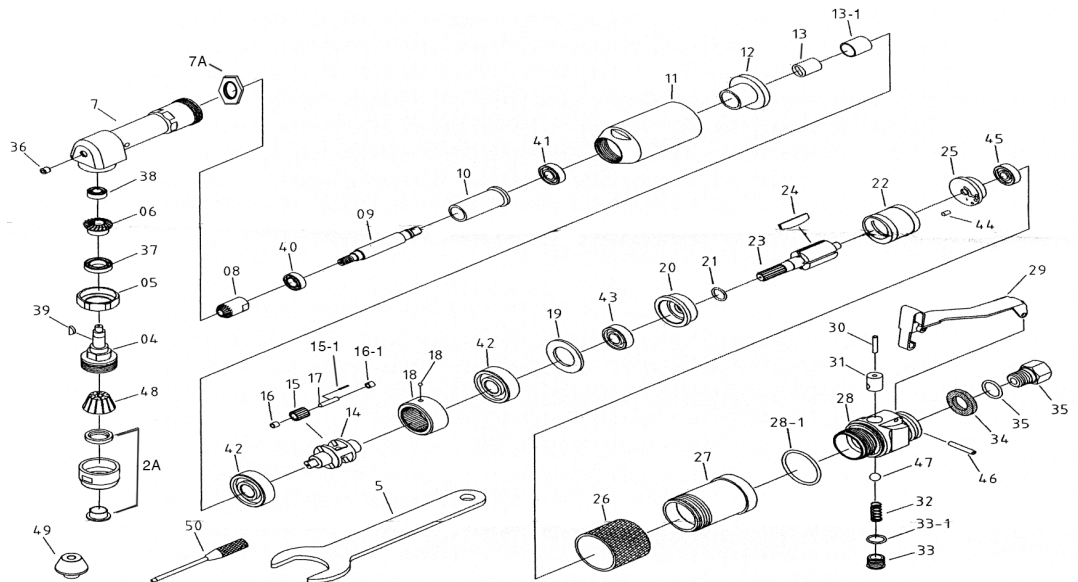


T-9890 90 DEGREE ANGLE DRILL



**OILING INSTRUCTIONS:
OIL AFTER EACH USE
WITH A FEW DROPS OF
AIRTOOL OIL THROUGH
THE AIR INLET. RUN FOR
1 SECOND TO COAT ALL
INTERNAL PARTS.**



USE 90 PSI MAXIMUM

REF #	PART #	DESCRIPTION	QTY	REF #	PART #	DESCRIPTION	QTY
2A	989002A	CLAMP NUT ASSEMBLY	1	28	989028	HANDLE	1
4	989004	SPINDLE	1	28-1	989028-1	O-RING	1
5	989005	NUT	1	29	989029	LEVER	1
6	989006	GEAR	1	30	989030	VALVE PIN	1
7	989007	ANGLE HOUSING	1	31	989031	VALVE BUSHING	1
7A	989007A	NUT	1	32	989032	SPRING	1
8	989008	GEAR	1	33	989033	PLUG	1
9	989009	SPINDLE	1	33-1	989033-1	O-RING	1
10	989010	SLEEVE	1	34	989034	WASHER	1
11	989011	HOUSING	1	35	989035	AIR INLET	1
12	989012	BUSHING	1	35-1	989035-1	O-RING	1
13	989013	COUPLING	1	36	989036	GREASE FITTING	1
13-1	989013-1	COUPLING BUSHING	1	37	989037	BEARING	1
14	989014	GEAR CAGE	1	38	989038	BEARING	1
15	989015	GEAR	2	39	989039	KEY	1
15-1	989015-1	ROLLER BEARING	26	40	989040	BEARING	1
16	989016	SPACER	2	41	989041	BEARING	1
16-1	989016-1	SPACER	2	42	989042	BEARING	2
17	989017	PIN	2	43	989043	BEARING	1
18	989018	INTERNAL GEAR	1	44	989044	SPRING PIN	1
18-1	989018-1	BALL	1	45	989045	BEARING	1
19	989019	WASHER	1	46	989046	SPRING PIN	1
20	989020	END PLATE	1	47	989047	PLASTIC BALL	1
21	989021	O-RING	1	48	989048	COLLET	1
22	989022	CYLINDER	1	49	989049	5/16"-24 ADAPTOR	1
23	989023	ROTOR	1	49-1	989049-1	1/4"-20 ADAPTOR	1
24	989024	ROTOR BLADE (4 PER SET)	1set	50	989050	FIXED PIN	1
25	989025	END PLATE	1	51	989051	WRENCH (26MM)	1
26	989026	RUBBER SLEEVE	1				
27	989027	CYLINDER SLEEVE	1				

505 N. Railroad Ave. 33435
P.O. Box 1117 33425
Boynton Beach, FL

SEE MORE OF OUR CATALOG AT
www.taylorpneumatic.com

JUNE 2020 / ALL RIGHTS RESERVED / COPYRIGHT 2020

Ph. (561)732-1111
Fax. (561)731-4412
Toll Free (800) 805-8665