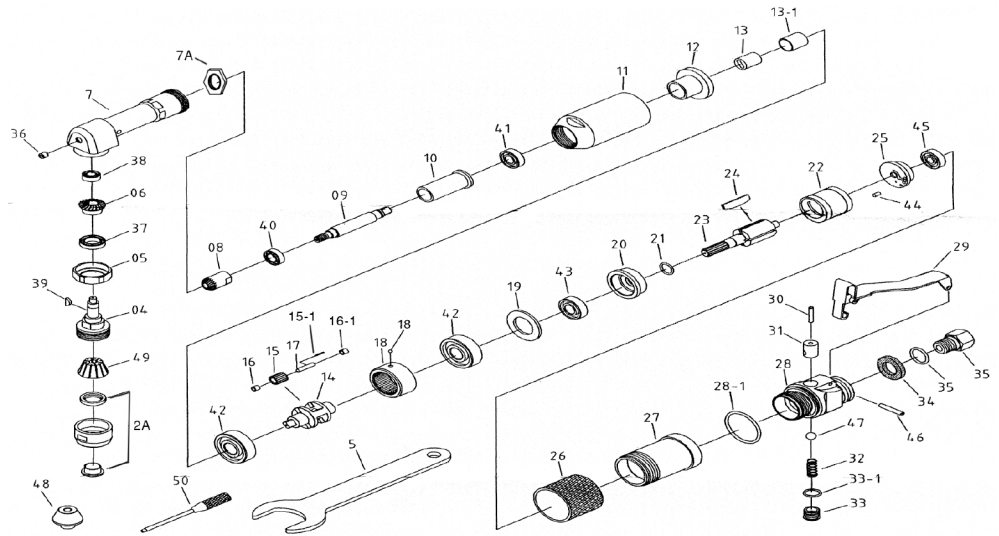


T-9870 90 DEGREE ANGLE DRILL



**OILING INSTRUCTIONS:
OIL AFTER EACH USE
WITH A FEW DROPS OF
AIRTOOL OIL THROUGH
THE AIR INLET. RUN FOR
1 SECOND TO COAT ALL
INTERNAL PARTS.**



USE 90 PSI MAXIMUM

REF #	PART #	DESCRIPTION	QTY	REF #	PART #	DESCRIPTION	QTY
1	987001	RING	1	27	987027	CYLINDER SLEEVE	1
2A	987002A	CLAMP NUT	1	28	987028	HANDLE	1
3	987003	WASHER	1	28-1	987028-1	O-RING	1
4	987004	SPINDLE	1	29	987029	LEVER	1
5	987005	CLAMP NUT	1	30	987030	VALVE PIN	1
6	987006	SPIRAL BEVEL GEAR	1	31	987031	VALVE BUSHING	1
7	987007	ANGLE HOUSING	1	32	987032	SPRING	1
7A	987007A	NUT	1	33	987033	PLUG	1
8	987008	SPIRAL BEVEL GEAR	1	33-1	987033-1	O-RING	1
9	987009	SPINDLE	1	34	987034	WASHER	1
10	987010	SLEEVE	1	35	987035	AIR INLET	1
11	987011	HOUSING	1	35-1	987035-1	O-RING	1
12	987012	BUSHING	1	36	987036	OIL FITTING	1
13	987013	COUPLING	1	37	987037	BEARING	1
13-1	987013-1	COUPLING BUSHING	1	38	987038	BEARING	1
14	987014	GEAR CAGE	1	39	987039	KEY	1
15	987015	GEAR	1	40	987040	BEARING	1
15-1	987015-1	ROLLER BEARING	26	41	987041	BEARING	1
16	987016	SPACER	2	42	987042	BEARING	2
16-1	987016-1	SPACER	2	43	987043	BEARING	1
17	987017	GEAR SHAFT	2	44	987044	SPRING PIN	1
18	987018	INTERNAL GEAR	1	45	987045	BEARING	1
19	987019	WASHER	1	46	987046	SPRING PIN	1
20	987020	END PLATE	1	47	987047	PLASTIC BALL	1
21	987021	O-RING	1	48	987048	CAP 1/4-28	1
22	987022	CYLINDER	1	49	987049	COLLET 1/4"	1
23	987023	ROTOR	1	50	987050	FIXED PIN LONG	1
24	987024	ROTOR BLADE (4 PER SET)	1set	51	987051	WRENCH (17MM)	1
25	987025	END PLATE	1	57	987057	O-RING	1
26	987026	RUBBER SLEEVE	1				

505 N. Railroad Ave. 33435
P.O. Box 1117 33425
Boynton Beach, FL

SEE MORE OF OUR CATALOG AT
www.taylorpneumatic.com

Ph. (561)732-1111
Fax. (561)731-4412
Toll Free (800) 805-8665

JUNE 2020 / ALL RIGHTS RESERVED / COPYRIGHT 2020