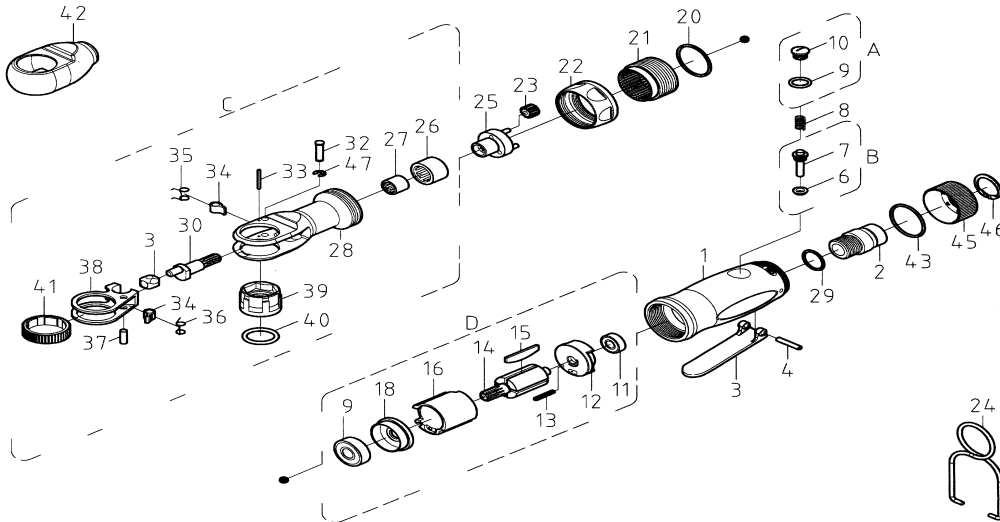


T-9825NK Thru Hole Ratchet



OILING INSTRUCTIONS
OIL AFTER EACH USE
WITH 1/2 TEASPOONS OF
AIRTOOL OIL THROUGH
THE AIR INLET. RUN FOR
1 SECOND TO COAT ALL
INTERNAL PARTS

USE 90 PSI MAXIMUM

Ref #	Part #	Description	Qty.	Ref #	Part #	Description	Qty.
1	9825N01	Housing	1	25	9825N25	Gear Carrier	1
2	9825N02	Air Inlet	1	26	9825N26	Needle Bearing	1
3	9825N03	Trigger	1	27	9825N27	Needle Bearing	1
4	9825N04	Spring Pin	1	28	9825N28	Ratchet Housing	1
6	9825N06	Packing	1	29	9825N29	O-Ring	1
7	9825N07	Throttle Valve	1	30	9825N30	Eccentric Shaft	1
8	9825N08	Spring	1	31	9825N31	Drive Bushing	1
9	9825N09	O-Ring	1	32	9825N32	Pin	1
10	9825N10	Screw	1	33	9825N33	Spring Pin	1
11	9825N11	Bearing	1	34	9825N34	Ratchet Pawl	2
12	9825N12	Rear End Plate	1	35	9825N35	Spring	1
13	9825N13	Spring Pin	1	36	9825N36	Spring	1
14	9825N14	Rotor	1	37	9825N37	Pin	1
15	9825N15	Rotor Blades(4 per set)	1 set	38	9825N38	Yoke	1
16	9825N16	Cylinder	1	39	9825N39	Bushing	1
18	9825N18	Front End Plate	1	40	9825N40	O-Ring	1
19	9825N19	Bearing	1	41	9825N41	Gear	1
20	9825N20	Washer	1	42	9825N42	Cover	1
21	9825N21	Internal Gear	1	43	9825N43	O-Ring	1
22	9825N22	Lock Nut	1	45	9825N45	Exhaust Deflector	1
23	9825N23	Gear	3	46	9825N46	Inverted Retaining Ring	1
24	9825N24	Suspension Ring	1	47	9825N47	E-Ring	1

505 N Railroad Ave. 33435
P.O. Box 1117 33425
Boynton Beach, Florida

SEE OUR CATALOG
at
www.taylorpneumatic.com

PH. 561-732-1111
FAX 561-731-4412
TOLL FREE 800-805-8665