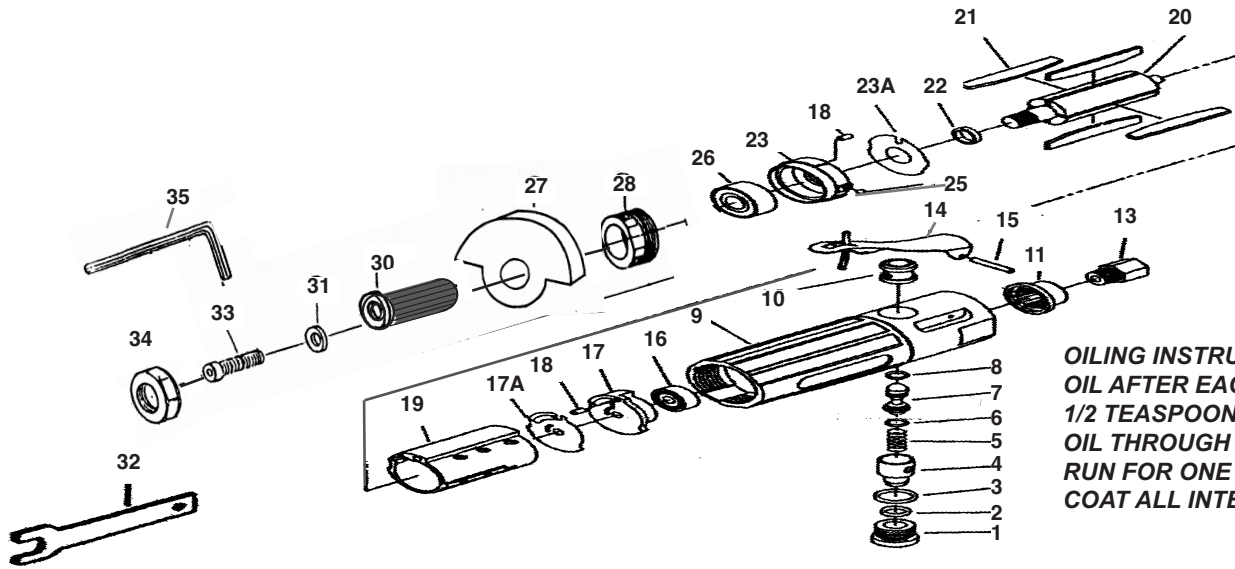


# T-9801 4" Super Duty Cutoff Tool



**OILING INSTRUCTIONS:**  
 OIL AFTER EACH USE WITH  
 1/2 TEASPOON OF AIRTOOL  
 OIL THROUGH THE AIR INLET.  
 RUN FOR ONE SECOND TO  
 COAT ALL INTERNAL PARTS

## USE 90 PSI MAXIMUM

Ref #	Part #	Description	Qty.	Ref #	Part #	Description	Qty.
1	9755R01N	Plug	1	20	9755R20N3	Rotor	1
2	9755R02N	O-Ring	1	21	9755R21N3	Rotor Blades (5 per set)	1set
3	9755R03N	O-Ring	1	22	9755R22N3	Stop Ring	1
4	9755R04N	Regulator	1	23	9755R23N3	Front End Plate	1
5	9755R05N	Spring	1	23A	9755R23AN3	Steel Plate	1
6	9755R06N	O-Ring	1	26	9755R26N	Bearing	1
7	9755R07N3	Valve Stem	1	27	980127N	Guard	1
8	9755R08N	O-Ring	1	28	980128N	Lock Nut	1
9	9755R09N3	Handle	1	30	980130N	Spindle	1
10	9755R10N3	Valve Bushing	1	31	980131N	Spacer	1
11	9755R11N	Muffler	1	32	980132N	Wrench	1
13	9755R13N	Air Inlet	1	33	980133N	Hex Screw	1
14	9755R14N	Lever	1	34	980134	Nut	1
15	9755R15N	Lever Pin	1	35	980135N	Allen Wrench (3/16")	1
16	9755R16N3	Bearing	1		T-9801341	4" Cutoff Wheel (not shown)	1
17	9755R17N3	Back End Plate	1				
17A	9755R17AN3	Steel Plate	1				
18	9755R18N	Pin	2				
19	9755R19N3	Cylinder	1				

505 N. Railroad Ave. 33435  
 P.O. Box 1117 33425  
 Boynton Beach, Florida

SEE OUR CATALOG  
 at  
[www.taylorpneumatic.com](http://www.taylorpneumatic.com)

0116TPTC /all rights reserved /COPYRIGHT 2016 / final

Ph. (561) 732-1111  
 Fax (561) 731-4412  
 Toll Free 800-805-8665