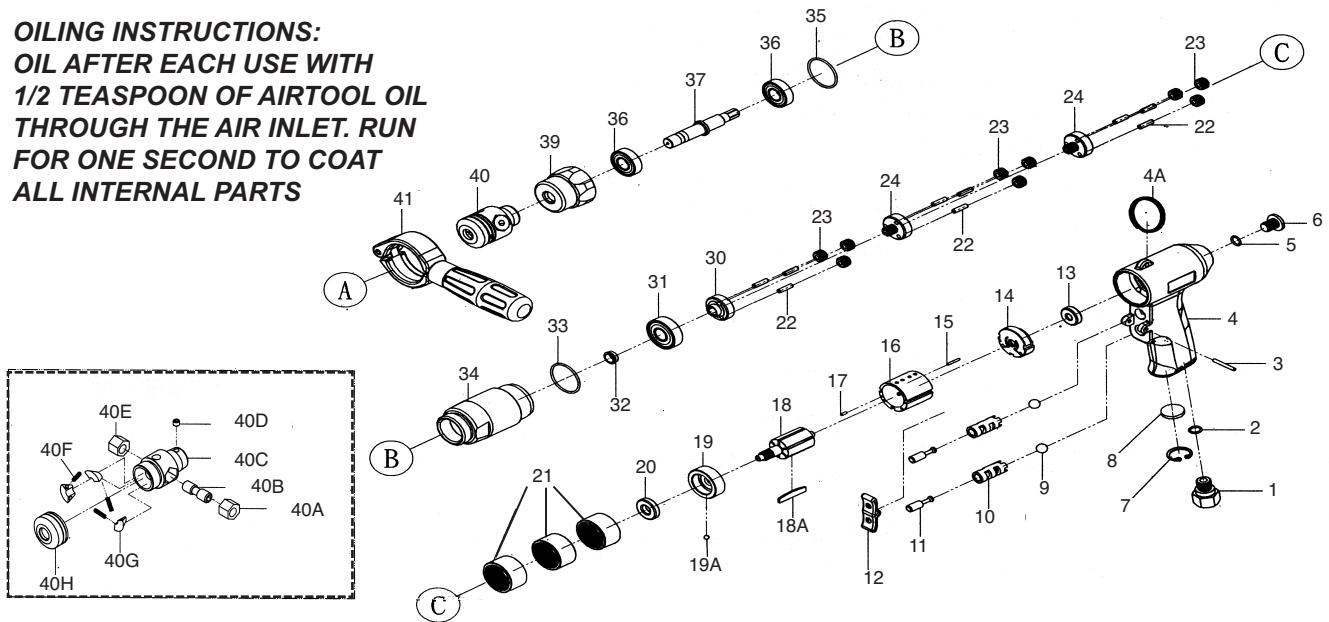


# T-9800 150 RPM Tapping Tool



**OILING INSTRUCTIONS:**  
OIL AFTER EACH USE WITH  
1/2 TEASPOON OF AIRTOOL OIL  
THROUGH THE AIR INLET. RUN  
FOR ONE SECOND TO COAT  
ALL INTERNAL PARTS



## USE 90 PSI MAXIMUM

Ref #	Part #	Description	Qty.	Ref #	Part #	Description	Qty.
1	980001	Air Inlet	1	21	980021	Ring Gear	3
2	980002	O-Ring	1	22	980022	Gear Pin	9
3	980003	Pin	1	23	980023	Gear	9
4	980004	Handle	1	24	980024	Gear Carrier	2
4A	980004A	Hanging Ring	1	30	980030	Gear Seat	1
5	980005	O-Ring	1	31	980031	Bearing	1
6	980006	Screw	1	32	980032	Bushing	1
7	980007	C Clip	1	33	980033	O-Ring	1
8	980008	Muffler	1	34	980034	Gear Housing	1
9	980009	Ball	2	35	980035	O-Ring	1
10	980010	Sleeve	2	36	980036	Bearing	2
11	980011	Throttle Pin	2	37	980037	Spindle	1
12	980012	Trigger	1	39	980039	Front Cap	1
13	980013	Bearing	1	40	980040	Chuck (Complete)	1
14	980014	Rear End Plate	1	40A	980040A	Nut	1
15	980015	Pin	1	40B	980040B	Shaft	1
16	980016	Cylinder	1	40C	980040C	Body	1
17	980017	Pin	1	40D	980040D	Screw	1
18	980018	Rotor	1	40E	980040E	Nut	1
18A	980018A	Rotor Blade (6 per set)	1 <sub>set</sub>	40F	980040F	Spring	3
19	980019	Front End Plate	1	40G	980040G	Jaws	3
19A	980019A	Ball	1	40H	980040H	Cap	1
20	980020	Bearing	2	41	980041	Handle	1

505 N. Railroad Ave. 33435  
P.O. Box 1117 33425  
Boynton Beach, Florida

SEE OUR CATALOG  
at  
[www.taylorpneumatic.com](http://www.taylorpneumatic.com)

0116TPTC /all rights reserved /COPYRIGHT 2016 / final

Ph. (561) 732-1111  
Fax (561) 731-4412  
Toll Free 800-805-8665