

# T-9709

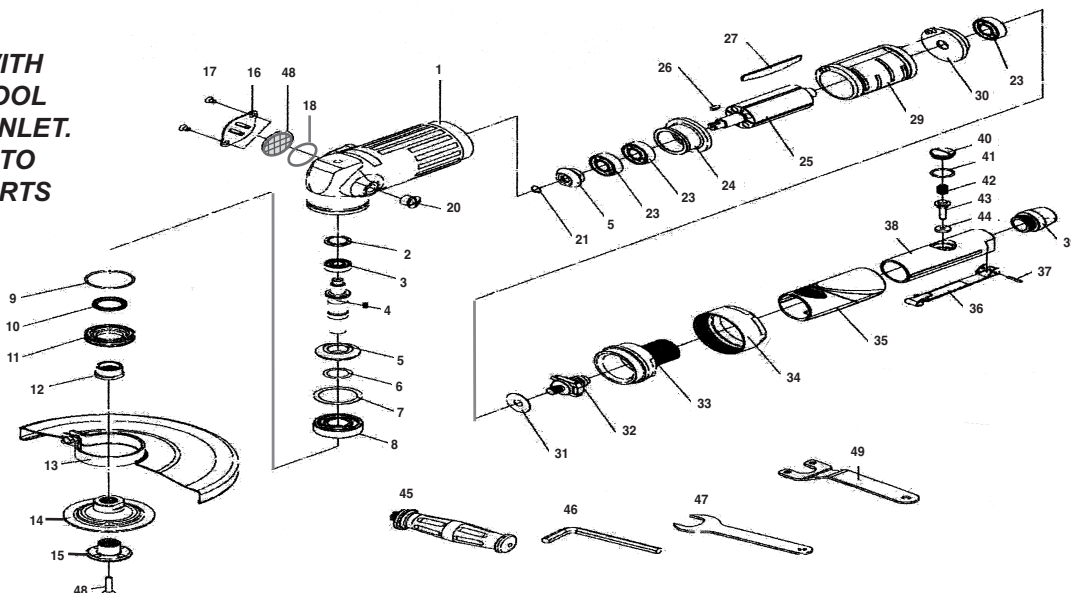
## 9" Heavy Duty Angle Grinder



**OILING INSTRUCTIONS:**  
**OIL AFTER EACH USE WITH**  
**1/2 TEASPOON OF AIRTOOL**  
**OIL THROUGH THE AIR INLET.**  
**RUN FOR ONE SECOND TO**  
**COAT ALL INTERNAL PARTS**

USE TYPE 27 WHEELS,  
 Gloves, Eye Protection  
 and Hearing Protection

See general operating  
 instructions



### USE 90 PSI MAXIMUM

Ref #	Part #	Description	Qty.	Ref #	Part #	Description	Qty.
1	970901	Housing	1	26	970926	Key	1
2	970902	Cover	1	27	970927	Rotor Blade (set of 4)	1 (set)
3	970903	Bearing	1	29	970929	Cylinder Assembly	1
4	970904N	Work Spindle (5/8"-11)	1	30	970930	Rear End Plate	1
5	970905	Gear Assembly	1 (set)	31	970931	Bearing Cap	1
6	970906	Washer	1	32	970932	Governor Cage	1
7	970907	Washer	1	33	970933	Valve Bushing	1
8	970908	Bearing	1	34	970934	Connecting Nut	1
9	970909	O-Ring	1	35	970935	Grip	1
10	970910	Oil Seal	1	36	970936	Throttle Lever	1
11	970911	Connecting Nut	1	37	970937	Pin	1
12	970912N	Screw	1	38	970938	Rear Housing	1
13	970913N	Grinder Wheel Guard (9")	1	39	970939	Air Inlet	1
14	970914N	Wheel Flange	1	40	970940	Valve Seat	1
15	970915N	Wheel Flange	1	41	970941	O-Ring	1
16	970916	Exhaust Deflector	1	42	970942	Spring	1
17	970917	Screw	2	43	970943	Valve Stem	1
18	970918	O-Ring	1	44	970944	Washer	1
19	970919	Lock Screw	1	45	970945	Handle	1
20	970920	Screw Assembly	1	46	970946	Allen Wrench (8MM)	1
21	970921	Retaining Ring	1	47	970947	Wrench (26MM)	1
23	970923	Bearing	3	48	970948	Muffler Packing	1
24	970924	Front End Plate	1				
25	970925	Rotor	1				

505 N. Railroad Ave. 33435  
 P.O. Box 1117 33425  
 Boynton Beach, Florida

SEE OUR CATALOG  
 at  
[www.taylorpneumatic.com](http://www.taylorpneumatic.com)

0116TPTC /all rights reserved /COPYRIGHT 2016 / final

Ph. (561) 732-1111  
 Fax (561) 731-4412  
 Toll Free 800-805-8665

# General instructions for type 27 Grinders



**OILING INSTRUCTIONS:**  
OIL AFTER EACH USE WITH 2 OR 3 TABLESPOONS OF AIRTOOL OIL THROUGH THE AIR INLET. RUN FOR ONE SECOND TO COAT ALL INTERNAL PARTS.

## **TYPE 27 GRINDERS - GENERAL INSTRUCTIONS**

1. ALWAYS DISCONNECT THE TOOL FROM AIR SOURCE WHEN CHANGING ACCESSORIES OR SERVICING THE TOOL
2. USE SAFETY GLASSES, FULL FACE SHIELDS, HEARING PROTECTION AND GLOVES.
3. STAY IN CONTROL OF THE GRINDER - DO NOT OVER REACH.
4. ALWAYS REMOVE WRENCHES FROM THE TOOL AFTER SERVICING. WRENCHES LEFT ATTACHED MAY RESULT IN SERIOUS HARM TO THE OPERATOR.
5. VIBRATION MAY BE HARMFUL TO YOUR ARMS AND HANDS. WEAR PROTECTION.
6. INSPECT THE TOOL AND AIR SUPPLY ON A REGULAR BASIS.
7. DO NOT REMOVE GUARDS OR SAFETY DEVICES. DO NOT MODIFY OR DEFEAT SAFETY DEVICES.
8. DO NOT MAKE CONTACT WITH ELECTRICAL LINES.
9. LEAVE TRIGGER OFF BEFORE CONNECTING THE TOOL TO THE AIR SUPPLY. AVOID ACCIDENTAL STARTS.
10. WEAR THE PROPER CLOTHING. DO NOT WEAR JEWELRY, LOOSE CLOTHING, OR LONG HAIR AS IT CAN GET CAUGHT IN ROTATING PARTS. KEEP GLOVES AWAY FROM ROTATING PARTS.
11. DO NOT WORK IN HAZARDOUS ATMOSPHERES WHERE SPARKS COULD IGNITE OR DETONATE FUMES.
12. WATCH WHAT YOU ARE DOING. USE COMMON SENSE WHEN OPERATING PNEUMATIC TOOLS. DO NOT USE PNEUMATIC TOOLS WHEN TIRED OR UNDER THE INFLUENCE OF MEDICATION, ALCOHOL OR DRUGS. SERIOUS PERSONAL INJURY MAY RESULT FROM A MOMENTS INATTENTION.
13. USE 90 PSI OF CLEAN AIR AT THE TOOL. USE 3/8" HOSE OR LARGER WITH FITTINGS 9/32 MINIMUM I.D.
14. ONLY USE CLEAN DRY COMPRESSED AIR. NEVER USE OXYGEN, CARBON DIOXIDE, COMBUSTIBLE GASES OR ANY OTHER BOTTLED GAS TO POWER THIS TOOL.
15. SECURE YOUR WORK BEFORE STARTING - USE CLAMPS OR FIND A SUITABLE WAY TO MAINTAIN STABILITY.
16. STORE TOOLS IN A CLEAN DRY ENVIRONMENT.
17. DO NOT USE DAMAGED TOOLS - MARK, AND RETURN FOR SERVICE.
18. NEVER FORCE THE TOOL. LET THE TOOL DO THE WORK.
19. STOP USE IMMEDIATELY IF TOOL IS MAKING AN UNUSUAL NOISE OR VIBRATION. HAVE TOOL CHECKED BY PROFESSIONAL TECHNICIAN.
20. OPERATE AT RATED TOOL SPEED.
21. ALWAYS USE A GRINDING WHEEL WITH A MAXIMUM SPEED RATING EQUAL TO OR GREATER THAN THE LABELED SPEED OF THE TOOL.
22. USE ONLY REINFORCED TYPE 27 WHEELS 7" OR 9" IN DIAMETER .
23. FOLLOW WHEEL MANUFACTURERS MOUNTING INSTRUCTIONS.
24. DO NOT OPERATE WITHOUT THE WHEEL GUARD IN PLACE.
25. WORK IN A WELL VENTILATED AREA AND USE APPROVED PERSONAL PROTECTIVE EQUIPMENT SUCH AS DUST MASKS, THAT ARE SPECIFICALLY DESIGNED TO FILTER OUT MICROSCOPIC PARTICLES. SOME DUST CREATED BY POWER SANDING, SAWING, GRINDING AND OTHER CONSTRUCTION ACTIVITIES CONTAIN CHEMICALS KNOWN TO CAUSE CANCER, BIRTH DEFECTS OR OTHER REPRODUCTIVE HARM. SOME EXAMPLES OF THESE CHEMICALS ARE: CRYSTALLINE SILICA FROM BRICKS, CEMENT AND OTHER MASONARY PRODUCTS, ARSENIC AND CHROMIUM FROM CHEMICALLY TREATED LUMBER AND LEAD FROM LEAD BASED PAINTS.  
YOUR RISK FROM EXPOSURE VARIES, DEPENDING ON HOW OFTEN YOU DO THIS TYPE OF WORK. TO REDUCE YOUR EXPOSURE TO THESE CHEMICALS WEAR PROTECTIVE MASKS AND CLOTHING.
26. KEEP CHILDREN, PETS AND BYSTANDERS AWAY WHILE OPERATING A PNEUMATIC TOOL. DISTRACTIONS CAN CAUSE YOU TO LOSE CONTROL. PROTECT OTHERS IN THE WORK AREA FROM DEBRIS SUCH AS METAL FILINGS AND SPARKS. PROVIDE BARRIERS OR SHIELDS AS NEEDED.
27. LUBRICATION - THIS TOOL REQUIRES A HIGH SPEED GREASE TO LUBRICATE THE PINION GEARS. ADD GREASE THROUGH THE GREASE FITTINGS AS NEEDED, APPROXIMATELY EVERY 8 HOURS.
28. THESE WARNINGS AND INSTRUCTIONS CAN NOT COVER ALL POSSIBLE CONDITIONS OR SITUATIONS. THE OPERATOR MUST UNDERSTAND THAT COMMON SENSE AND CAUTIONS ARE FACTORS WHICH CAN NOT BE BUILT INTO THE PRODUCT BUT MUST BE SUPPLIED BY THE OPERATOR.

505 N. Railroad Ave. 33435  
P.O. Box 1117 33425  
Boynton Beach, Florida

**SEE OUR CATALOG**  
at  
[www.taylorpneumatic.com](http://www.taylorpneumatic.com)

PH. 561-732-1111  
FAX 561-731-4412  
Toll Free 800-805-8665