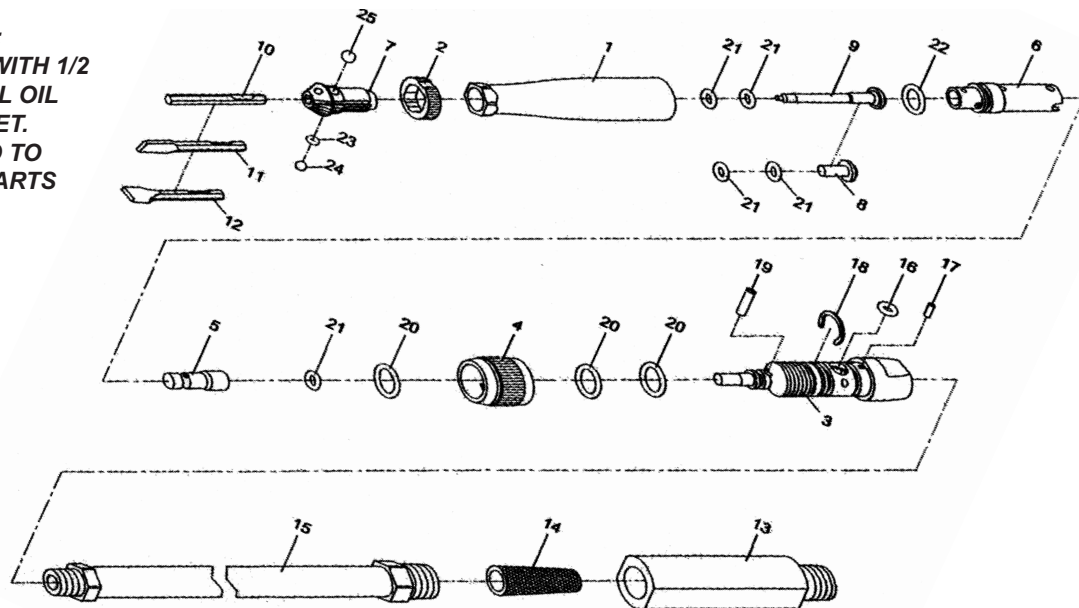


T-9616 Air Scribe & Engraving Chisel Kit



OILING INSTRUCTIONS:
OIL AFTER EACH USE WITH 1/2 TEASPOON OF AIRTOOL OIL THROUGH THE AIR INLET. RUN FOR ONE SECOND TO COAT ALL INTERNAL PARTS



USE 90 PSI MAXIMUM

Ref #	Part #	Description	Qty.	Ref #	Part #	Description	Qty.
1	961601	Housing	1	14	961614	Filter	1
2	961602	Ring Ball Lock	1	15	961615	Whip Hose	1
3	961603	Valve Body	1	16	961616	O-Ring	1
4	961604	Regulator Dial	1	17	961617	Spring Pin	1
5	961605	Piston	1	18	961618	C Ring	1
6	961606	Cylinder	1	19	961619	Spring Pin	1
7	961607	Chisel Guide	1	20	961620	O-Ring	3
8	961608	Chisel Joint	1	21	961621	O-Ring	5
9	961609	Pen Chisel	1	22	961622	O-Ring	1
10	961610	Chisel A	1	23	961623	O-Ring	1
11	961611	Chisel B	1	24	961624	Steel Ball	1
12	961612	Chisel C	1	25	961625	Steel Ball	1
13	961613	Filter Body	1				

505 N. Railroad Ave. 33435
 P.O. Box 1117 33425
 Boynton Beach, Florida

SEE OUR CATALOG
 at
www.taylorpneumatic.com

Ph. (561) 732-1111
 Fax (561) 731-4412
 Toll Free 800-805-8665

T-9616 Air Scribe Engraving Chisel Kit

OPERATING INSTRUCTIONS

Starting the tool is accomplished by turning the Regulator Dial part #961604. Turn it all the way on then back off to desired speed. Bump the stylus slightly to start the piston.

As with all air tools, let the tool do the work. Do not bear down.

Hold the tool at a 15 degree angle for best results.

To change the stylus, hold the flat on part #961603 with a wrench or vice, and hold part #961601 with a wrench and loosen until #961601 and #961603 separate.

Turn #961601 upside down and catch the #961609. Replace worn parts with new #961609 and 2 - #961621 O-rings. Re-assemble #961601 onto #961603.

To change from the stylus to the chisels, remove #961601 from #961603. Make sure tool is held straight up and remove stylus #961609 and insert #961608 and 2- #961621 O-rings. Re-assemble the #961601 onto #961603. Now twist #961602 to the left, insert the chisel and twist to the right to lock. The chisel should be free to move, but not exit the tool.