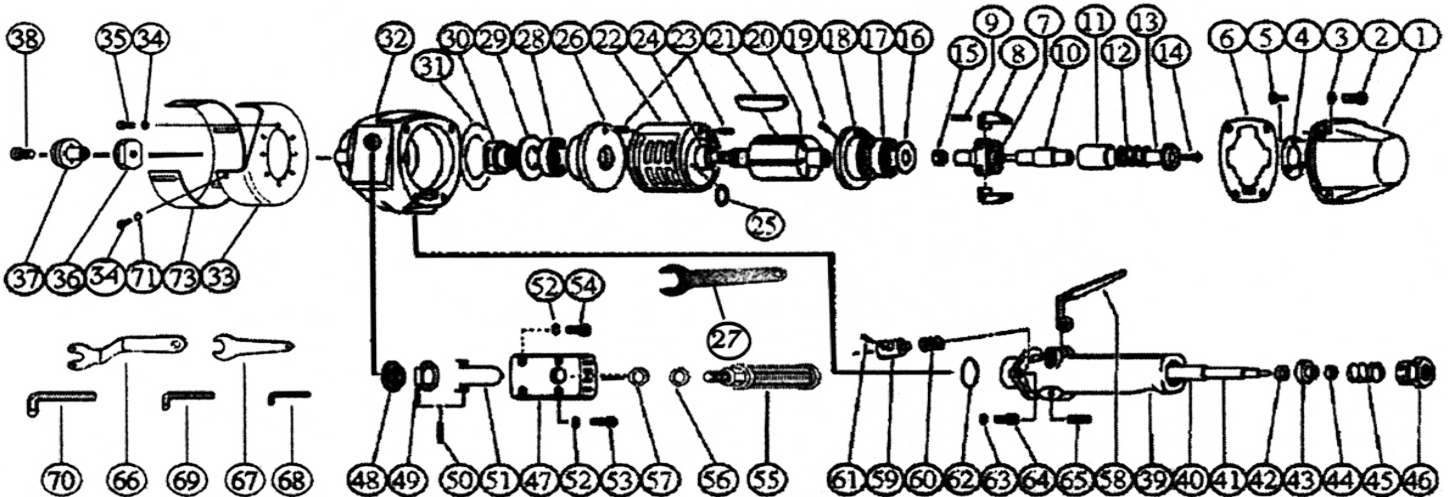


T-9600C

6" Vertical Cup Grinder

5,900 RPM



OILING INSTRUCTIONS: OIL AFTER EACH USE WITH A FEW DROPS OF AIRTOOL OIL THROUGH THE AIR INLET. RUN FOR ONE SECOND TO COAT ALL INTERNAL PARTS.

USE TYPE 27 WHEELS, Gloves, Eye Protection and Hearing Protection

USE 90 PSI MAXIMUM

Ref #	Part #	Description	Qty.	Ref #	Part #	Description	Qty.
1	960001	Housing	1	37	9600C37	Wheel Flange	1
2	960002	Hex Bolt	4	38	9600C38	Screw	1
3	960003	Spring Washer	4	39	960039	Throttle Valve Body	1
4	960004	Washer	1	40	960040	Throttle Valve Rod Bushing	1
5	960005	Screw	3	41	960041	Throttle Valve Rod	1
6	960006	Packing	1	42	960042	Throttle Valve	1
7	960007	Governor Cage	1	43	960043	Throttle Valve Washer	1
8	960008	Weight	2	44	960044	Sub Throttle Valve	1
9	960009	Roll Pin	2	45	960045	Throttle Valve Spring	1
10	960010	Shaft	1	46	960046	Inlet Bushing	1
11	960011	Valve	1	47	960047	Exhaust Cover	1
12	960012	Valve Spring	1	48	960048	Exhaust Valve	1
13	960013	Valve Spring Holder	1	49	960049	Muffler Plate	1
14	960014	Screw	1	50	960050	Roll Pin	1
15	960015	U- Nut	1	51	960051	Muffler Spring	1
16	960016	Cover	1	52	960052	Spring Washer	4
17	960017	Bearing	1	53	960053	Hex Bolt	2
18	960018	Upper Plate	1	54	960054	Hex Bolt	2
19	960019	Roll Pin	1	55	960055	Dead Handle	1
20	960020	Rotor	1	56	960056	Spring Washer	1
21	960021	Rotor Blade (Set of 5)	1set	57	960057	Washer	1
22	960022	Cylinder	1	58	960058	Throttle Valve Lever	1
23	960023	Roll Pin	2	59	960059	Lock Key	1
24	960024	Adjusting Collar	1	60	960060	Lock Spring	1
25	960025	Adjusting Washer	1	61	960061	Bolt	1
26	960026	Lower Cylinder Plate	1	62	960062	O-Ring	1
27	9600C27	Wrench 19MM	1	63	960063	Spring Washer	2
28	960028	Bearing	1	64	960064	Hex Bolt	2
29	960029	Bearing Spacer	1	65	960065	Pin	1
30	960030	Rotor Nut	1	66	9600C66	Spanner Wrench	1
31	960031	Adjusting Washer	1	67	9600C67	Wrench 41MM	1
32	960032	Housing	1	68	9600C68	Allen Wrench	1
33	9600C33	Wheel Guard	1	69	9600C69	Allen Wrench	1
34	9600C34	Spring Washer	8	70	9600C70	Allen Wrench	1
35	9600C35	Hex Bolt	4	71	9600C71	Washer	4
36	9600C36	Wheel Flange	1	72	960072	Bolt	4
				73	9600C73	Wheel Guard	1

505 N. Railroad Ave. 33435
P.O. Box 1117 33425
Boynton Beach, Florida

FOR WARRANTY INFORMATION &
WARRANTY REGISTRATION VISIT
www.taylorpneumatic.com

Ph. (561) 732-1111
Fax (561) 731-4412
Toll Free 800-805-8665

General instructions for type 27 Grinders



OILING INSTRUCTIONS:
OIL AFTER EACH USE WITH 1 OR 2 TEASPOONS OF AIRTOOL OIL THROUGH THE AIR INLET. RUN FOR ONE SECOND TO COAT ALL INTERNAL PARTS.

TYPE 27 GRINDERS - GENERAL INSTRUCTIONS

1. ALWAYS DISCONNECT THE TOOL FROM AIR SOURCE WHEN CHANGING ACCESSORIES OR SERVICING THE TOOL

2. USE SAFETY GLASSES, FULL FACE SHIELDS, HEARING PROTECTION AND GLOVES.

3. STAY IN CONTROL OF THE GRINDER - DO NOT OVER REACH.

4. ALWAYS REMOVE WRENCHES FROM THE TOOL AFTER SERVICING. WRENCHES LEFT ATTACHED MAY RESULT IN SERIOUS HARM TO THE OPERATOR.

5. VIBRATION MAY BE HARMFUL TO YOUR ARMS AND HANDS. WEAR PROTECTION.

6. INSPECT THE TOOL AND AIR SUPPLY ON A REGULAR BASIS.

7. DO NOT REMOVE GUARDS OR SAFETY DEVICES. DO NOT MODIFY OR DEFEAT SAFETY DEVICES.

8. DO NOT MAKE CONTACT WITH ELECTRICAL LINES.

9. LEAVE TRIGGER OFF BEFORE CONNECTING THE TOOL TO THE AIR SUPPLY. AVOID ACCIDENTAL STARTS.

10. WEAR THE PROPER CLOTHING. DO NOT WEAR JEWELRY, LOOSE CLOTHING, OR LONG HAIR AS IT CAN GET CAUGHT IN ROTATING PARTS. KEEP GLOVES AWAY FROM ROTATING PARTS.

11. DO NOT WORK IN HAZARDOUS ATMOSPHERES WHERE SPARKS COULD IGNITE OR DETONATE FUMES.

12. WATCH WHAT YOU ARE DOING. USE COMMON SENSE WHEN OPERATING PNEUMATIC TOOLS. DO NOT USE PNEUMATIC TOOLS WHEN TIRED OR UNDER THE INFLUENCE OF MEDICATION, ALCOHOL OR DRUGS. SERIOUS PERSONAL INJURY MAY RESULT FROM A MOMENTS INATTENTION.

13. USE 90 PSI OF CLEAN AIR AT THE TOOL. USE 3/8" HOSE OR LARGER WITH FITTINGS 9/32 MINIMUM I.D.

14. ONLY USE CLEAN DRY COMPRESSED AIR. NEVER USE OXYGEN, CARBON DIOXIDE, COMBUSTIBLE GASES OR ANY OTHER BOTTLED GAS TO POWER THIS TOOL.

15. SECURE YOUR WORK BEFORE STARTING - USE CLAMPS OR FIND A SUITABLE WAY TO MAINTAIN STABILITY.

16. STORE TOOLS IN A CLEAN DRY ENVIRONMENT.

17. DO NOT USE DAMAGED TOOLS - MARK, AND RETURN FOR SERVICE.

18. NEVER FORCE THE TOOL. LET THE TOOL DO THE WORK.

19. STOP USE IMMEDIATELY IF TOOL IS MAKING AN UNUSUAL NOISE OR VIBRATION. HAVE TOOL CHECKED BY PROFESSIONAL TECHNICIAN.

20. OPERATE AT RATED TOOL SPEED.

21. ALWAYS USE A GRINDING WHEEL WITH A MAXIMUM SPEED RATING EQUAL TO OR GREATER THAN THE LABELED SPEED OF THE TOOL.

22. USE ONLY REINFORCED TYPE 27 WHEELS 7" OR 9" IN DIAMETER .

23. FOLLOW WHEEL MANUFACTURERS MOUNTING INSTRUCTIONS.

24. DO NOT OPERATE WITHOUT THE WHEEL GUARD IN PLACE.

25. WORK IN A WELL VENTILATED AREA AND USE APPROVED PERSONAL PROTECTIVE EQUIPMENT SUCH AS DUST MASKS, THAT ARE SPECIFICALLY DESIGNED TO FILTER OUT MICROSCOPIC PARTICLES. SOME DUST CREATED BY POWER SANDING, SAWING, GRINDING AND OTHER CONSTRUCTION ACTIVITIES CONTAIN CHEMICALS KNOWN TO CAUSE CANCER, BIRTH DEFECTS OR OTHER REPRODUCTIVE HARM. SOME EXAMPLES OF THESE CHEMICALS ARE: CRYSTALLINE SILICA FROM BRICKS, CEMENT AND OTHER MASONARY PRODUCTS, ARSENIC AND CHROMIUM FROM CHEMICALLY TREATED LUMBER AND LEAD FROM LEAD BASED PAINTS.

YOUR RISK FROM EXPOSURE VARIES, DEPENDING ON HOW OFTEN YOU DO THIS TYPE OF WORK. TO REDUCE YOUR EXPOSURE TO THESE CHEMICALS WEAR PROTECTIVE MASKS AND CLOTHING.

26. KEEP CHILDREN, PETS AND BYSTANDERS AWAY WHILE OPERATING A PNEUMATIC TOOL. DISTRACTIONS CAN CAUSE YOU TO LOSE CONTROL. PROTECT OTHERS IN THE WORK AREA FROM DEBRIS SUCH AS METAL FILINGS AND SPARKS. PROVIDE BARRIERS OR SHIELDS AS NEEDED.

27. LUBRICATION - THIS TOOL REQUIRES A HIGH SPEED GREASE TO LUBRICATE THE PINION GEARS. ADD GREASE THROUGH THE GREASE FITTINGS AS NEEDED, APPROXIMATELY EVERY 8 HOURS.

28. THESE WARNINGS AND INSTRUCTIONS CAN NOT COVER ALL POSSIBLE CONDITIONS OR SITUATIONS. THE OPERATOR MUST UNDERSTAND THAT COMMON SENSE AND CAUTIONS ARE FACTORS WHICH CAN NOT BE BUILT INTO THE PRODUCT BUT MUST BE SUPPLIED BY THE OPERATOR.

505 N. Railroad Ave. 33435
P.O. Box 1117 33425
Boynton Beach, Florida

SEE OUR CATALOG
at
www.taylorpneumatic.com

PH. 561-732-1111
FAX 561-731-4412
Toll Free 800-805-8665