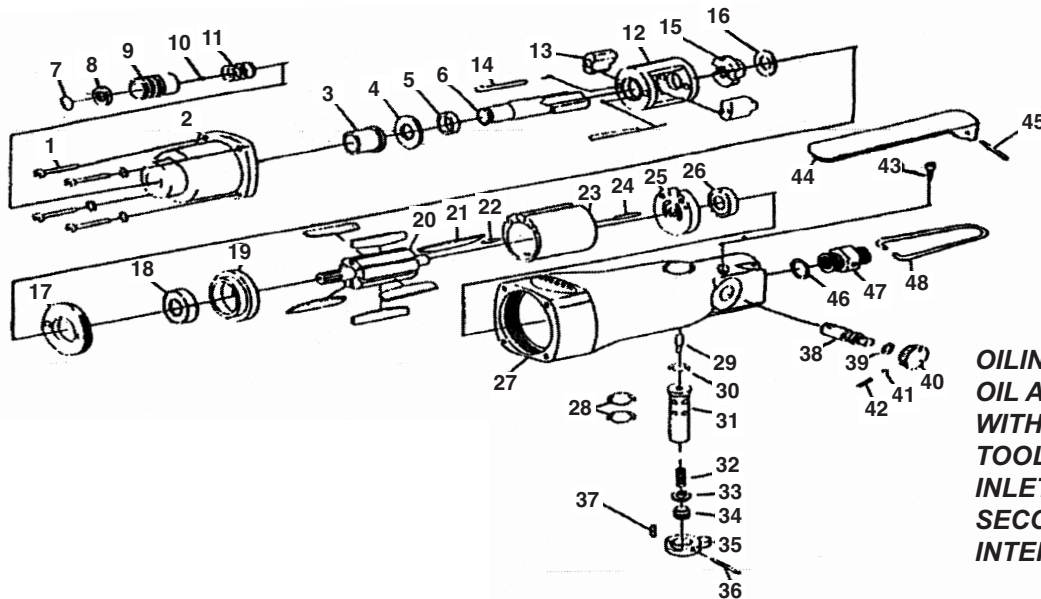


# T-8863S 1/4" Screwdriver



**OILING INSTRUCTIONS:**  
OIL AFTER EACH USE  
WITH 1/2 TEASPOON OF AIR  
TOOL OIL THROUGH THE AIR  
INLET. RUN FOR ONE  
SECOND TO COAT ALL  
INTERNAL PARTS

### USE 90 PSI MAXIMUM

Ref #	Part #	Description	Qty.	Ref #	Part #	Description	Qty.
1	8863S01	Bolt	4	26	8863S26	Bearing	1
2	8863S02	Cover	1	27	8863S27	Housing	2
3	8863S03	Sleeve	1	28	8863S28	O-Ring	1
4	8863S04	Washer	1	29	8863S29	Pin	1
5	8863S05	Ring	1	30	8863S30	O-Ring	1
6	8863S06	Shaft	1	31	8863S31	Valve Sleeve	1
7	8863S07	C-Ring	1	32	8863S32	Spring	1
8	8863S08	Washer	1	33	8863S33	O-Ring	1
9	8863S09	Bit Holder	1	34	8863S34	Ring	1
10	8863S10	Ball	1	35	8863S35	Reverse Valve	1
11	8863S11	Spring	1	36	8863S36	Pin	1
12	8863S12	Hammer Cage	1	37	8863S37	Pin	1
13	8863S13	Hammer	2	38	8863S38	Valve	1
14	8863S14	Pin	2	39	8863S39	O-Ring	1
15	8863S15	Cam	1	40	8863S40	Screw	1
16	8863S16	Washer	1	41	8863S41	Spring	1
17	8863S17	Lock Nut	1	42	8863S42	Ball	1
18	8863S18	Bearing	1	43	8863S43	Bolt	1
19	8863S19	Front End Plate	1	44	8863S44	Trigger	1
20	8863S20	Rotor	1	45	8863S45	Pin	1
21	8863S21	Rotor Blade (set of 6)	1 set	46	8863S46	O-Ring	1
22	8863S22	Pin	1	47	8863S47	Air Inlet	1
23	8863S23	Cylinder	1	48	8863S48	Hanger	1
24	8863S24	Pin	1				
25	8863S25	Back End Plate	1				

505 N. Railroad Ave. 33435  
P.O. Box 1117 33425  
Boynton Beach, Florida

SEE OUR CATALOG  
at  
[www.taylorpneumatic.com](http://www.taylorpneumatic.com)

0116TPTC /all rights reserved /COPYRIGHT 2016 / final

Ph. (561) 732-1111  
Fax (561) 731-4412  
Toll Free 800-805-8665