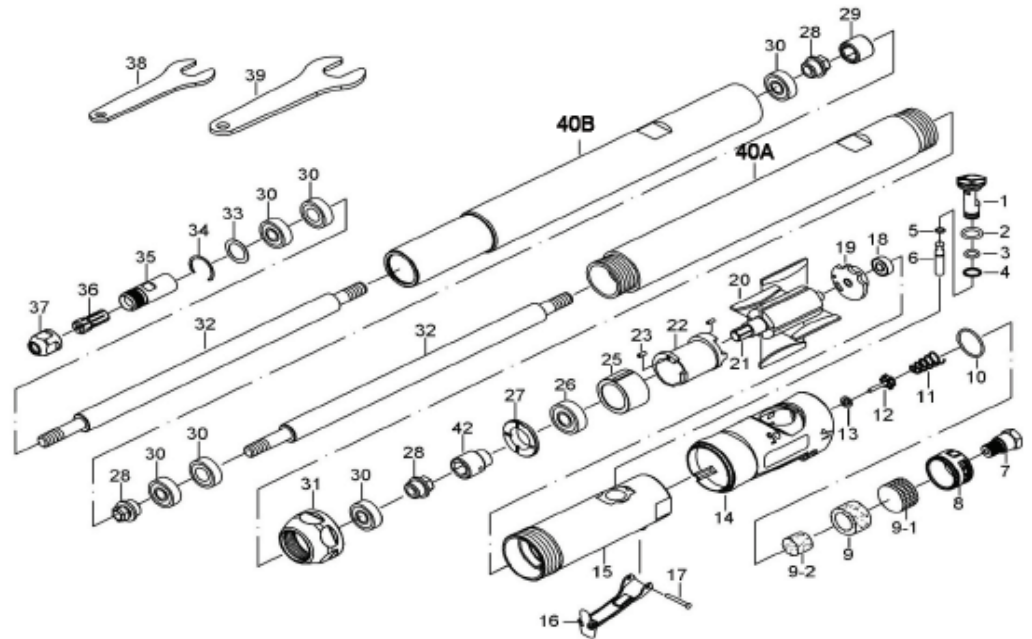


T-8857RE

1/4" EXTENDED DIE GRINDER 1 HP



**OILING INSTRUCTIONS:
OIL AFTER EACH USE
WITH A FEW DROPS OF
AIRTOOL OIL THROUGH
THE AIR INLET. RUN FOR
1 SECOND TO COAT ALL
INTERNAL PARTS.**



USE 90 PSI MAXIMUM

REF #	PART #	DESCRIPTION	QTY	REF #	PART #	DESCRIPTION	QTY
1S	8857RE01S	REGULATOR W/ O-RINGS	1set	21	8857RE21N	ROTOR	1
2	8857RE02	O-RING	1	22	8857RE22	CYLINDER	1
3	8857RE03	O-RING	1	23	8857RE23	PIN	2
4	8857RE04	SNAP RING	1	24	8857RE24	BEARING SPACER	1
5	8857RE05	O-RING	1	25	8857RE25	FRONT PLATE	1
6S	8857RE06S	VALVE STEM W/ O-RING	1set	26	8857RE26	BEARING	1
7	8857RE07	INLET BUSHING	1	27	8857RE27	WASHER	1
8S	8857RE08S	MUFFLER W/ MESH	1set	28	8857RE28	COUPLING NUT	3
9	8857RE09	SILENCER	1	29	8857RE29	COUPLING	1
9-1	8857RE09-1	STAINLESS MESH	1	30	8857RE30	BEARING	6
9-2	8857RE09-2	SILENCER	1	31	8857RE31	CLAMP NUT	1
10	8857RE10	O-RING	1	32A	8857RE32A	SPINDLE (SHAFT)	2
11	8857RE11	SPRING	1	33	8857RE33	WASHER	1
12S	8857RE12S	VALVE W/ SPRING & WASHER	1set	34	8857RE34	SNAP RING	1
13	8857RE13	WASHER	1	35	8857RE35	COLLET CASING	1
14	8857RE14	PROTECTING RUBBER	1	36	993026A	1/4" COLLET	1
15	8857RE15	HOUSING	1	36	993026B	3/8" COLLET (OPTIONAL)	1
16	8857RE16	SAFETY THROTTLE	1	37	8857RE37	COLLET NUT	1
17	8857RE17	SPRING PIN	1	38	8857RE38	WRENCH	1
18	8857RE18	BEARING	1	39	8857RE39	WRENCH	1
19	8857RE19	REAR PLATE	1	40A	8857RE40A	SPINDLE HOUSING	1
20	8857RE20	ROTOR BLADES (SET OF 4)	1set	40B	8857RE40B	SPINDLE HOUSING	1
				42	8857RE42	COUPLER	1

505 N. Railroad Ave. 33435
P.O. Box 1117 33425
Boynton Beach, FL

SEE MORE OF OUR CATALOG AT
www.taylorpneumatic.com

Ph. (561)732-1111
Fax. (561)731-4412
Toll Free (800) 805-8665