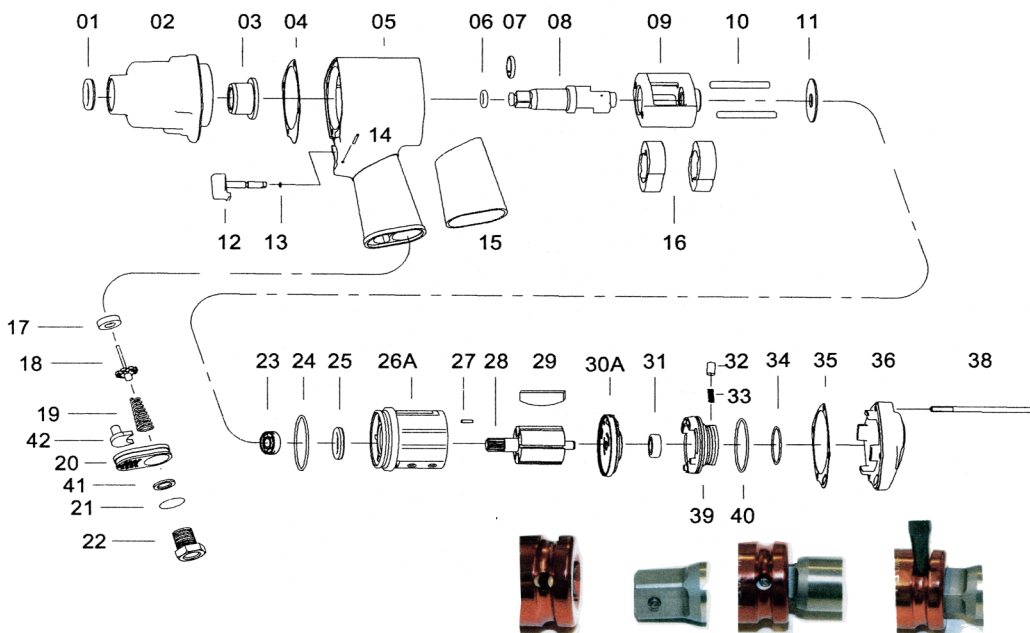


T-8849 1/2", T-8849A 3/4" T-8849P 1/2" & T-8849L EXTENDED 1/2" IMPACT WRENCHES



OILING INSTRUCTIONS:
OIL AFTER EACH USE WITH A FEW DROPS OF AIRTOOL OIL THROUGH THE AIR INLET. RUN FOR 1 SECOND TO COAT ALL INTERNAL PARTS.

IMPORTANT INFORMATION FOR T-8849P

!!! WARNING !!!
ALWAYS USE IMPACT SOCKETS THAT HAVE A HOLE DRILLED IN THE SIDE. USING THE HOLE IN THE SIDE MAY BE THE ONLY WAY TO REMOVE THE SOCKET FROM THE ANVIL. INSERT A POINTED OBJECT TO PUSH PIN RETAINER DOWN AND REMOVE SOCKET.

USE 90 PSI MAXIMUM

| REF # | PART # | DESCRIPTION | QTY | REF # | PART # | DESCRIPTION | QTY |
|-------|---------|-------------------------------|-----|-------|--------|--------------------------|------|
| 1 | 884901 | OIL SEAL | 1 | 18 | 884918 | VALVE STEM | 1 |
| | 8849A01 | OIL SEAL | 1 | 19 | 884919 | SPRING | 1 |
| 2 | 884902 | HAMMER CASE | 1 | 20 | 884920 | EXHAUST DEFLECTOR | 1 |
| | 8849A02 | HAMMER CASE | 1 | 21 | 884921 | O-RING | 1 |
| 3 | 884903 | BUSHING | 1 | 22 | 884922 | AIR INLET | 1 |
| | 8849A03 | BUSHING | 1 | 23 | 884923 | BEARING | 1 |
| 4 | 884904 | FRONT GASKET | 1 | 24 | 884924 | O-RING | 1 |
| 5 | 884905 | MOTOR HOUSING | 1 | 25 | 884925 | OIL SEAL | 1 |
| 6 | 884906 | O-RING | 1 | 26 | 884926 | CYLINDER | 1 |
| | 8849A06 | O-RING | 1 | 27 | 884927 | SPRING PIN | 1 |
| 7 | 884907 | ANVIL COLLAR | 1 | 28 | 884928 | ROTOR | 1 |
| | 8849A07 | ANVIL COLLAR | 1 | 29 | 884929 | ROTOR BLADES (6 PER SET) | 1set |
| 8 | 884908 | ANVIL | 1 | 30 | 884930 | REAR END PLATE | 1 |
| | 8849A08 | ANVIL | 1 | 31 | 884931 | BEARING | 1 |
| | 8849L08 | ANVIL, EXTENDED | 1 | 32 | 884932 | PIN | 1 |
| | 8849P08 | ANVIL W/PIN (SHOWN IN PHOTOS) | 1 | 33 | 884933 | SPRING | 1 |
| 9 | 884909 | HAMMER CAGE | 1 | 34 | 884934 | O-RING | 1 |
| 10 | 884910 | HAMMER PIN | 2 | 35 | 884935 | REAR GASKET | 1 |
| 11 | 884911 | WASHER | 1 | 36 | 884936 | REAR COVER | 1 |
| 12 | 884912 | TRIGGER | 1 | 38 | 884938 | BOLT | 4 |
| 13 | 884913 | O-RING | 1 | 39 | 884939 | REVERSE LEVER | 1 |
| 14 | 884914 | SPRING PIN | 1 | 40 | 884940 | O-RING | 1 |
| 15 | 884915 | GRIP | 1 | 41 | 884941 | WASHER | 1 |
| 16 | 884916 | HAMMER DOG | 2 | 42 | 884942 | MUFFLER | 1 |
| 17 | 884917 | VALVE SEAT | 1 | | | | |

505 N. Railroad Ave. 33435
P.O. Box 1117 33425
Boynton Beach, FL

SEE MORE OF OUR CATALOG AT
www.taylorpneumatic.com

JUNE 2020 / ALL RIGHTS RESERVED / COPYRIGHT 2020

Ph. (561)732-1111
Fax. (561)731-4412
Toll Free (800) 805-8665