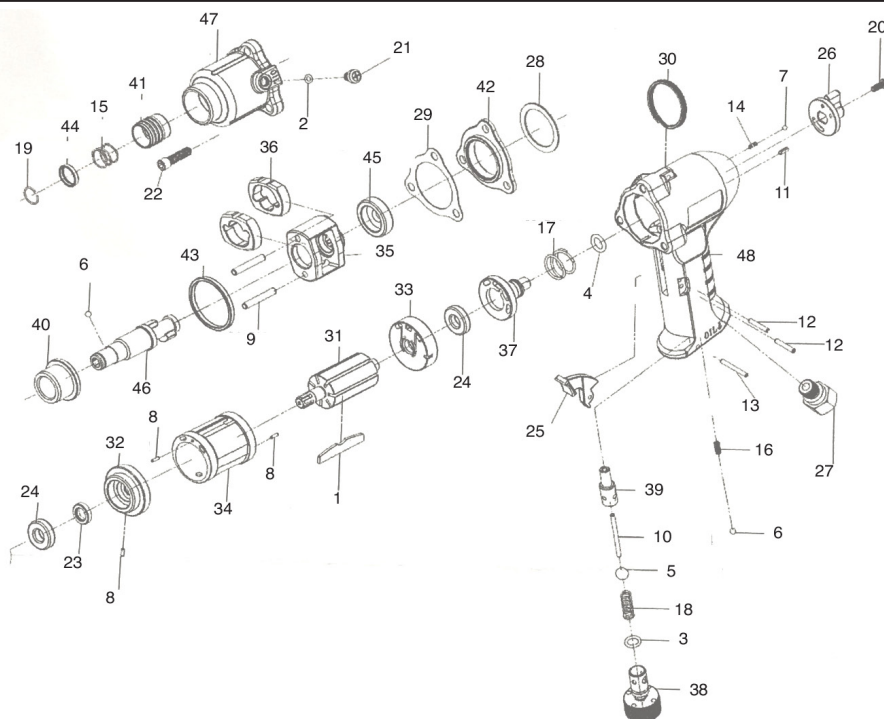


T-8844S

1/4" TWIN HAMMER SCREWDRIVER



OILING INSTRUCTIONS:
OIL AFTER EACH USE
WITH A FEW DROPS OF
AIRTOOL OIL THROUGH
THE AIR INLET. RUN FOR
1 SECOND TO COAT ALL
INTERNAL PARTS.

USE 90 PSI MAXIMUM

REF #	PART #	DESCRIPTION	QTY	REF #	PART #	DESCRIPTION	QTY
1	8844S01	ROTOR BLADE (SET OF 7)	1set	25	8844S25	TRIGGER	1
2	8844S02	O-RING	1	26	8844S26	REVERSE VALVE	1
3	8844S03	O-RING	1	27	8844S27	AIR INLET	1
4	8844S04	O-RING	1	28	8844S28	GASKET	1
5	8844S05	PLASTIC BALL	1	29	8844S29	GASKET	1
6	8844S06	STEEL BALL	2	30	8844S30	HANGER	1
7	8844S07	STEEL BALL	1	31	8844S31	ROTOR	1
8	8844S08	PIN	3	32	8844S32	FRONT END PLATE	1
9	8844S09	PIN	2	33	8844S33	REAR END PLATE	1
10	8844S10	PIN	1	34	8844S34	CYLINDER	1
11	8844S11	PIN	1	35	8844S35	HAMMER CASE	1
12	8844S12	PIN	2	36	8844S36	HAMMERS	2
13	8844S13	PIN	1	37	8844S37	VALVE	1
14	8844S14	SPRING	1	38	8844S38	REGULATOR KNOB	1
15	8844S15	SPRING	1	39	8844S39	BUSHING	1
16	8844S16	SPRING	1	40	8844S40	BUSHING	1
17	8844S17	SPRING	1	41	8844S41	BALL RETAINER	1
18	8844S18	SPRING	1	42	8844S42	MOTOR PLATE	1
19	8844S19	RETAINING RING	1	43	8844S43	WASHER	1
20	8844S20	SCREW	1	44	8844S44	WASHER	1
21	8844S21	SCREW	1	45	8844S45	WASHER	1
22	8844S22	SCREW	1	46	8844S46	ANVIL	1
23	8844S23	OIL SEAL	1	47	8844S47	FRONT HOUSING	1
24	8844S24	BEARING	2	48	8844S48	HANDLE	1

505 N. Railroad Ave. 33435
P.O. Box 1117 33425
Boynton Beach, FL

FOR WARRANTY INFORMATION &
WARRANTY REGISTRATION VISIT

www.taylorpneumatic.com

JUNE 2020 / ALL RIGHTS RESERVED / COPYRIGHT 2020

Ph. (561)732-1111
Fax. (561)731-4412
Toll Free (800) 805-8665