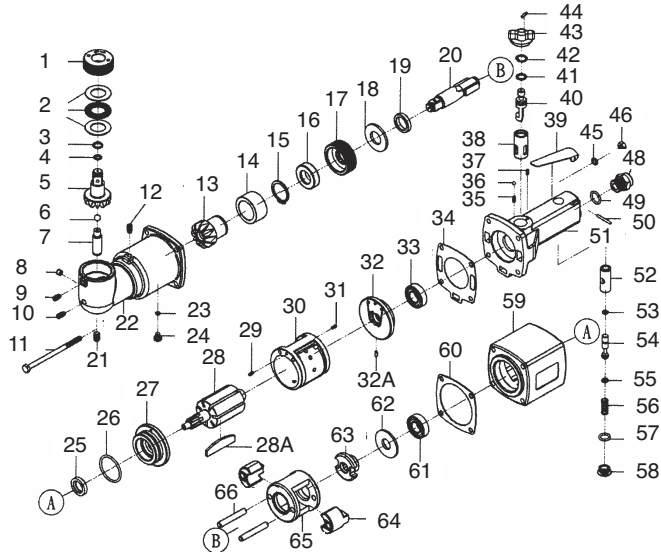


# T-8834AH

## 1/2" Heavy Duty Angle Impact Wrench



**OILING INSTRUCTIONS:**  
**OIL AFTER EACH USE WITH**  
**1/2 TEASPOON OF AIRTOOL**  
**OIL THROUGH THE AIR INLET.**  
**RUN FOR 1 SECOND TO COAT**  
**ALL INTERNAL PARTS**



### USE 90 PSI MAXIMUM

Ref #	Part #	Description	Qty.	Ref #	Part #	Description	Qty.
1	8834AH01	Threaded Cap	1	33	8834AH33	Bearing	1
2	8834AH02	Bearing Assembly	1	34	8834AH34	Gasket	1
3	8834AH03	Retaining Ring	1	35	8834AH35	Spring	1
4	8834AH04	O-Ring	1	36	8834AH36	Steel Ball	1
5	8834AH05	Spindle	1	37	8834AH37	Pin	1
6	8834AH06	Steel Ball	1	38	8834AH38	Bushing	1
7	8834AH07	Pin	1	39	8834AH39	Lever	1
8	8834AH08	Grease Fitting	1	40	8834AH40	Reverse Valve	1
9	8834AH09	Screw	1	41	8834AH41	O-Ring	1
10	8834AH10	Screw	1	42	8834AH42	Stop Ring	1
11	8834AH11	Bolt	4	43	8834AH43	Reverse Valve Lever	1
12	8834AH12	Screw	1	44	8834AH44	Pin	1
13	8834AH13	Gear	1	45	8834AH45	Washer	4
14	8834AH14	Bushing	1	46	8834AH46	Nut	4
15	8834AH15	Bearing Clip	1	48	8834AH48	Air Inlet	1
16	8834AH16	Bearing	1	49	8834AH49	O-Ring	1
17	8834AH17	Bearing Nut	1	50	8834AH50	Pin	1
18	8834AH18	Washer	1	51	8834AH51	Handle	1
19	8834AH19	Ring	1	52	8834AH52	Bushing	1
20	8834AH20	Anvil	1	53	8834AH53	O-Ring	1
21	8834AH21	Screw	1	54	8834AH54	Valve Stem	1
22	8834AH22	Angle Head	1	55	8834AH55	O-Ring	1
23	8834AH23	O-Ring	1	56	8834AH56	Spring	1
24	8834AH24	Screw	1	57	8834AH57	O-Ring	1
25	8834AH25	Oil Seal	1	58	8834AH58	Screw	1
26	8834AH26	O-Ring	1	59	8834AH59	Motor Body	1
27	8834AH27	Front End Plate	1	60	8834AH60	Gasket	1
28	8834AH28	Rotor	1	61	8834AH61	Bearing	1
28A	8834AH28A	Rotor Blades (7 per set)	1 set	62	8834AH62	Washer	1
29	8834AH29	Cylinder	2	63	8834AH63	Hammer Cam	1
30	8834AH30	Cylinder	1	64	8834AH64	Hammer	2
32	8834AH32	Back End Plate	1	65	8834AH65	Hammer Cage	1
32A	8834AH32A	Pin	1	66	8834AH66	Pin	2

505 N Railroad Ave. 33435  
P.O. Box 1117 33425  
Boynton Beach, Florida

**SEE OUR CATALOG**  
at  
**www.taylorpneumatic.com**

PH. 561-732-1111  
FAX 561-731-4412  
TOLL FREE 800-805-8665

# General Instructions Impact Wrenches

## PLEASE READ AND FOLLOW ALL WARNINGS

An impact wrench is an amazing time saving machine. If its strengths and weaknesses are taken into consideration it can be used for years of trouble free service. Always use 90 PSI Maximum AT THE TOOL. Using higher air pressures can prematurely wear parts and strain parts not designed for the higher pressure. In most instances, within the first five seconds of use, an impact wrench develops its maximum torque. If a fastener is still not moving try penetrating oil or a larger impact wrench. Always use impact sockets. Always oil your airtools before storing. Put a few spoonfuls of airtool oil in the air inlet and run the tool for a second or two to coat internal parts.

### **OILING INSTRUCTIONS:**

*OIL AFTER EACH USE WITH 2 OR 3 TABLESPOONS OF AIRTOOL OIL THROUGH THE AIR INLET. RUN FOR ONE SECOND TO COAT ALL INTERNAL PARTS. 1/4" TO 1/2" IMPACTS USUALLY USE 30 WT. NON DETERGENT OIL IN THE HAMMER CASE. WRENCHES 3/4" TO 1-1/2" USUALLY USE GREASE IN THE HAMMER CASE.*

### **IMPACT WRENCHES - GENERAL INSTRUCTIONS**

1. ALWAYS DISCONNECT THE TOOL FROM AIR SOURCE WHEN CHANGING ACCESSORIES OR SERVICING THE TOOL.
2. CHECK ALL FASTENERS DAILY. BOLTS MUST BE KEPT TIGHT TO MAINTAIN SAFETY AND TOP TOOL OPERATING PERFORMANCE.
3. STAY IN CONTROL OF THE IMPACT WRENCH
4. ALWAYS USE IMPACT SOCKETS - STANDARD SOCKETS MAY BE BRITTLE AND BREAK CAUSING DAMAGE TO THE OPERATOR OR THE TOOL.
5. VIBRATION MAY BE HARMFUL TO YOUR ARMS AND HANDS. WEAR PROTECTION.
6. INSPECT THE TOOL AND AIR SUPPLY AND AIR HOSE ON A REGULAR BASIS.
7. DO NOT MAKE CONTACT WITH ELECTRICAL LINES.
8. LEAVE TRIGGER OFF BEFORE CONNECTING THE TOOL TO THE AIR SUPPLY. AVOID ACCIDENTAL STARTS.
9. WEAR THE PROPER CLOTHING. DO NOT WEAR JEWELRY, LOOSE CLOTHING, OR LONG HAIR AS IT CAN GET CAUGHT IN ROTATING PARTS. KEEP GLOVES AWAY FROM ROTATING PARTS.
10. DO NOT WORK IN HAZARDOUS ATMOSPHERES WHERE SPARKS COULD IGNITE OR DETONATE FUMES.
11. WATCH WHAT YOU ARE DOING. USE COMMON SENSE WHEN OPERATING PNEUMATIC TOOLS. DO NOT USE PNEUMATIC TOOLS WHEN TIRED OR UNDER THE INFLUENCE OF MEDICATION, ALCOHOL OR DRUGS. SERIOUS PERSONAL INJURY MAY RESULT FROM A MOMENTS INATTENTION.
12. USE 90 PSI AT THE TOOL. USE 3/8", 1/2" or 3/4" HOSE OR LARGER WITH FITTINGS 9/32 MINIMUM I.D. AS SPECIFIED
13. DO NOT WORK IN HAZARDOUS ATMOSPHERES WHERE SPARKS COULD IGNITE OR DETONATE FUMES.
14. WATCH WHAT YOU ARE DOING. USE COMMON SENSE WHEN OPERATING PNEUMATIC TOOLS. DO NOT USE PNEUMATIC TOOLS WHEN TIRED OR UNDER THE INFLUENCE OF MEDICATION, ALCOHOL OR DRUGS. SERIOUS PERSONAL INJURY MAY RESULT FROM A MOMENTS INATTENTION.
15. USE 90 PSI AT THE TOOL. USE 3/8", 1/2" or 3/4" HOSE OR LARGER WITH FITTINGS 9/32 MINIMUM I.D. AS SPECIFIED
16. ONLY USE CLEAN DRY COMPRESSED AIR. NEVER USE OXYGEN, CARBON DIOXIDE, COMBUSTIBLE GASES OR ANY OTHER BOTTLED GAS TO POWER THIS TOOL.
17. STORE TOOLS IN A CLEAN DRY ENVIRONMENT.
18. DO NOT USE DAMAGED TOOLS - MARK, AND RETURN DAMAGED TOOLS FOR SERVICE.
19. NEVER FORCE THE TOOL. LET THE TOOL DO THE WORK.
20. STOP USE IMMEDIATELY IF TOOL IS MAKING AN UNUSUAL NOISE OR VIBRATION. HAVE TOOL CHECKED BY PROFESSIONAL TECHNICIAN.
21. KEEP CHILDREN, PETS AND BYSTANDERS AWAY WHILE OPERATING A PNEUMATIC TOOL. DISTRACTIONS CAN CAUSE YOU TO LOSE CONTROL.
22. THESE WARNINGS AND INSTRUCTIONS CAN NOT COVER ALL POSSIBLE CONDITIONS OR SITUATIONS. THE OPERATOR MUST UNDERSTAND THAT COMMON SENSE AND CAUTIONS ARE FACTORS WHICH CAN NOT BE BUILT INTO THE PRODUCT BUT MUST BE SUPPLIED BY THE OPERATOR.

**ADDITIONAL INFORMATION IS AVAILABLE FROM:**  
**AMERICAN NATIONAL STANDARDS INSTITUTE**  
**11 WEST 42ND ST.**  
**NEW YORK, NY 10036**

**REQUEST A COPY OF ANSI B186.1 SAFETY CODE FOR PORTABLE AIR TOOLS.**

### **LIMITED LIFETIME WARRANTY**

Most products of Taylor Pneumatic are warranted to be free from defects in material and workmanship for the life of the tool. This warranty applies to the original purchaser only. This warranty does not cover tools that have been abused, misused, modified, not properly lubricated or to normal wear and tear. Taylor Pneumatic will at its option repair or replace the defective product free of charge except for shipping. Taylor Pneumatic's sole liability and your exclusive remedy under this warranty is limited to the repair or replacement of the defective product. There are no other warranties expressed or implied and Taylor Pneumatic shall not be liable for incidental, consequential, or special damages, expenses or costs except as described above. WARRANTY VOID IF TOOL IS DISASSEMBLED. Return tools to **Taylor Pneumatic**. Be sure to include your name, address, proof of purchase and description of the suspected defect.

This warranty applies to the basic tool. It does not apply to wear and tear on accessories or consumables such as drill chucks, backing pads for sanders, punch and dies for nibblers, spray gun cups or accessories from a kit.