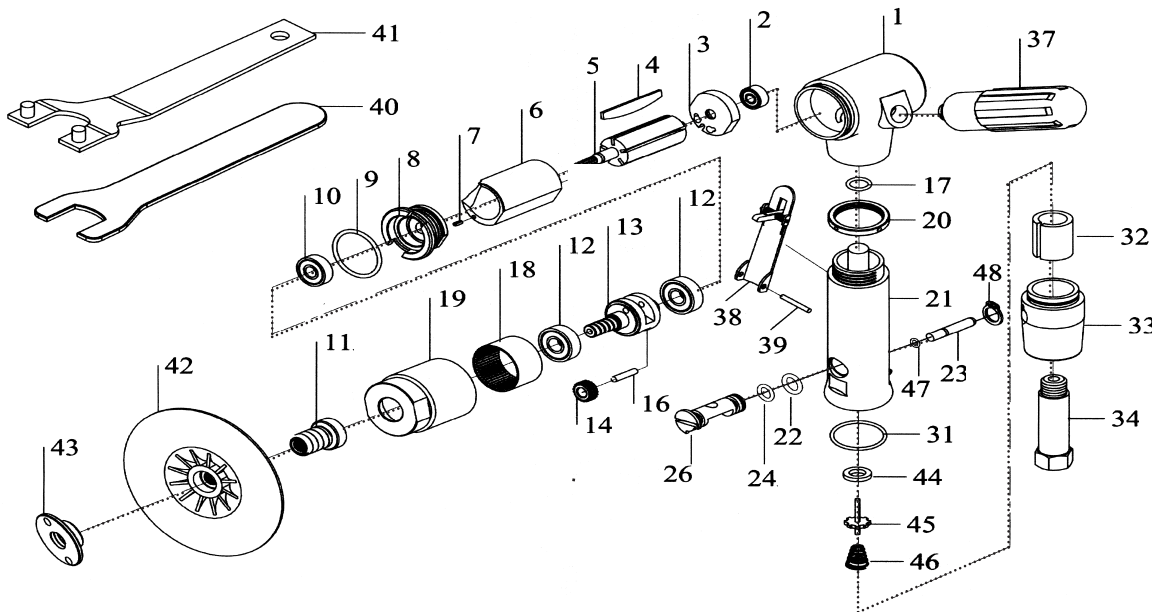


T-8818P 7" Vertical Polisher 2500 RPM



OILING INSTRUCTIONS:
OIL AFTER EACH USE WITH 1/2 TEASPOON OF AIRTOOL OIL THROUGH THE AIR INLET. RUN FOR ONE SECOND TO COAT ALL INTERNAL PARTS

USE 90 PSI MAXIMUM

Ref #	Part #	Description	Qty.	Ref #	Part #	Description	Qty.
1	8818P01	Housing	1	32	8818P32	Muffler	1
2	8818P02	Bearing	1	33	8818P33	Air Deflector	2
3	8818P03	Rear End Plate	1	34	8818P34	Air Inlet	1
4	8818P04	Rotor Blade (5 per set)	1set	37	8818P37	Handle	1
5	8818P05	Rotor	1	38	8818P38	Throttle Lever	1
6	8818P06	Cylinder	1	39	8818P39	Spring Pin	1
7	8818P07	Spring Pin	2	40	8818P40	Wrench	1
8	8818P08	Front End Plate	1	41	8818P41	Spanner Wrench	1
9	8818P09	O-Ring	1	42	8818P42	7" Back Up Pad	1
10	8818P10	Bearing	1	43	8818P43	Pad Nut	1
11	8818P11	Shaft Adapter	1	44	8818P44	Seal	1
12	8818P12	Bearing	2	45	8818P45	Valve Stem	1
13	8818P13	Gear Cage	1	46	8818P46	Spring	1
14	8818P14	Gear	2	47	8818P47	O-Ring	1
16	8818P16	Pin	2	48	8818P48	Snap Ring	1
17	8818P17	O-Ring	1				
18	8818P18	Internal Gear	1				
19	8818P19	Gear Housing	1				
20	8818P20	Lock Nut	1				
21	8818P21	Housing	1				
22	8818P22	O-Ring	1				
23	8818P23	Valve Stem	1				
24	8818P24	O-Ring	1				
26	8818P26	Regulator	1				
31	8818P31	O-Ring	1				

505 N. Railroad Ave. 33435
P.O. Box 1117 33425
Boynton Beach, Florida

SEE OUR CATALOG
at
www.taylorpneumatic.com

0116TPTC /all rights reserved /COPYRIGHT 2016 / final

Ph. (561) 732-1111
Fax (561) 731-4412
Toll Free 800-805-8665