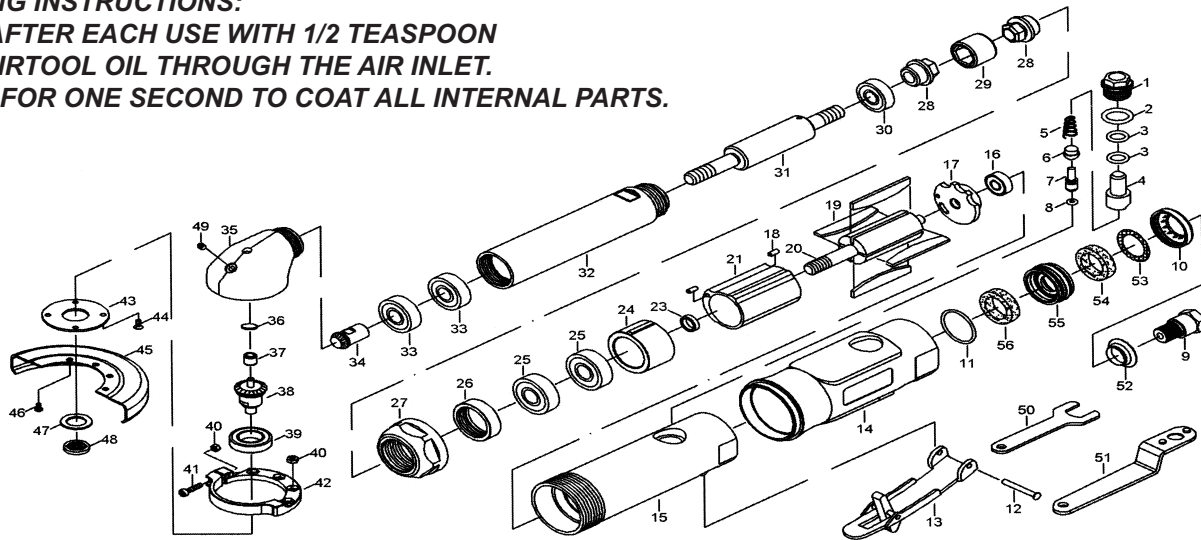


# T-8814EX 4" Extended Angle Grinder



**OILING INSTRUCTIONS:**  
**OIL AFTER EACH USE WITH 1/2 TEASPOON**  
**OF AIRTOOL OIL THROUGH THE AIR INLET.**  
**RUN FOR ONE SECOND TO COAT ALL INTERNAL PARTS.**



## USE 90 PSI MAXIMUM

Ref #	Part #	Description	Qty.	Ref #	Part #	Description	Qty.
1	8814EX01	Screw	1	30	8814EX30	Bearing	1
2	8814EX02	O-Ring	1	31	8814EX31	Spindle	1
3	8814EX03	O-Ring	2	32	8814EX32	Spindle Housing	1
4	8814EX04	Air Regulator	1	33	8814EX33	Bearing	2
5	8814EX05	Spring	1	34	8814EX34	Pinion Gear	1
6	8814EX06	Bushing	1	35	8814EX35	Angle Housing	1
7	8814EX07	Valve Stem	1	36	8814EX36	Washer	1
8	8814EX08	O-Ring	1	37	8814EX37	Bearing	1
9	8814EX09	Air Inlet	1	38	8814EX38	Pinion Gear	1
10	8814EX10	Exhaust Sleeve	1	39	8814EX39	Bearing	1
11	8814EX11	O-Ring	1	40	8814EX40	Nut	5
12	8814EX12	Pin	1	41	8814EX41	Screw	1
13	8814EX13	Lever	1	42	8814EX42	Handle Link	1
14	8814EX14	Rubber Guard	1	43	8814EX43	Face Plate	1
15	8814EX15	Housing	1	44	8814EX44	Screw	4
16	8814EX16	Bearing	1	45	8814EX45	Guard	1
17	8814EX17	Rear Plate	1	46	8814EX46	Screw	4
18	8814EX18	Pin	2	47	8814EX47	Nut	1
19	8814EX19	Rotor Blade (4 per set)	1set	48	8814EX48	Disc Nut	1
20	8814EX20	Rotor	1	49	8814EX49	Grease Fitting	1
21	8814EX21	Cylinder	1	50	8814EX50	Wrench 17MM	1
23	8814EX23	Spacer	1	51	8814EX51	Spanner Wrench	1
24	8814EX24	Front End Plate	1	52	8814EX52	Muffler Body	1
25	8814EX25	Bearing	2	53	8814EX53	Stainless Mesh	1
26	8814EX26	Nut	1	54	8814EX54	Silencer	1
27	8814EX27	Clamp Nut	1	55	8814EX55	Muffler	1
28	8814EX28	Coupling Nut	2	56	8814EX56	Silencer	1
29	8814EX29	Coupling	1				

505 N. Railroad Ave. 33435  
P.O. Box 1117 33425  
Boynton Beach, Florida

SEE OUR CATALOG  
at  
[www.taylorpneumatic.com](http://www.taylorpneumatic.com)

0116TPTC /all rights reserved /COPYRIGHT 2016 / final

Ph. (561) 732-1111  
Fax (561) 731-4412  
Toll Free 800-805-8665

# General instructions for type 27 Grinders



**OILING INSTRUCTIONS:**  
OIL AFTER EACH USE WITH 2 OR 3 TABLESPOONS OF AIRTOOL OIL THROUGH THE AIR INLET. RUN FOR ONE SECOND TO COAT ALL INTERNAL PARTS.

## **TYPE 27 GRINDERS - GENERAL INSTRUCTIONS**

**1. ALWAYS DISCONNECT THE TOOL FROM AIR SOURCE WHEN CHANGING ACCESSORIES OR SERVICING THE TOOL**

**2. USE SAFETY GLASSES, FULL FACE SHIELDS, HEARING PROTECTION AND GLOVES.**

**3. STAY IN CONTROL OF THE GRINDER - DO NOT OVER REACH.**

**4. ALWAYS REMOVE WRENCHES FROM THE TOOL AFTER SERVICING. WRENCHES LEFT ATTACHED MAY RESULT IN SERIOUS HARM TO THE OPERATOR.**

**5. VIBRATION MAY BE HARMFUL TO YOUR ARMS AND HANDS. WEAR PROTECTION.**

**6. INSPECT THE TOOL AND AIR SUPPLY ON A REGULAR BASIS.**

**7. DO NOT REMOVE GUARDS OR SAFETY DEVICES. DO NOT MODIFY OR DEFEAT SAFETY DEVICES.**

**8. DO NOT MAKE CONTACT WITH ELECTRICAL LINES.**

**9. LEAVE TRIGGER OFF BEFORE CONNECTING THE TOOL TO THE AIR SUPPLY. AVOID ACCIDENTAL STARTS.**

**10. WEAR THE PROPER CLOTHING. DO NOT WEAR JEWELRY, LOOSE CLOTHING, OR LONG HAIR AS IT CAN GET CAUGHT IN ROTATING PARTS. KEEP GLOVES AWAY FROM ROTATING PARTS.**

**11. DO NOT WORK IN HAZARDOUS ATMOSPHERES WHERE SPARKS COULD IGNITE OR DETONATE FUMES.**

**12. WATCH WHAT YOU ARE DOING. USE COMMON SENSE WHEN OPERATING PNEUMATIC TOOLS. DO NOT USE PNEUMATIC TOOLS WHEN TIRED OR UNDER THE INFLUENCE OF MEDICATION, ALCOHOL OR DRUGS. SERIOUS PERSONAL INJURY MAY RESULT FROM A MOMENTS INATTENTION.**

**13. USE 90 PSI OF CLEAN AIR AT THE TOOL. USE 3/8" HOSE OR LARGER WITH FITTINGS 9/32 MINIMUM I.D.**

**14. ONLY USE CLEAN DRY COMPRESSED AIR. NEVER USE OXYGEN, CARBON DIOXIDE, COMBUSTIBLE GASES OR ANY OTHER BOTTLED GAS TO POWER THIS TOOL.**

**15. SECURE YOUR WORK BEFORE STARTING - USE CLAMPS OR FIND A SUITABLE WAY TO MAINTAIN STABILITY.**

**16. STORE TOOLS IN A CLEAN DRY ENVIRONMENT.**

**17. DO NOT USE DAMAGED TOOLS - MARK, AND RETURN FOR SERVICE.**

**18. NEVER FORCE THE TOOL. LET THE TOOL DO THE WORK.**

**19. STOP USE IMMEDIATELY IF TOOL IS MAKING AN UNUSUAL NOISE OR VIBRATION. HAVE TOOL CHECKED BY PROFESSIONAL TECHNICIAN.**

**20. OPERATE AT RATED TOOL SPEED.**

**21. ALWAYS USE A GRINDING WHEEL WITH A MAXIMUM SPEED RATING EQUAL TO OR GREATER THAN THE LABELED SPEED OF THE TOOL.**

**22. USE ONLY REINFORCED TYPE 27 WHEELS 7" OR 9" IN DIAMETER .**

**23. FOLLOW WHEEL MANUFACTURERS MOUNTING INSTRUCTIONS.**

**24. DO NOT OPERATE WITHOUT THE WHEEL GUARD IN PLACE.**

**25. WORK IN A WELL VENTILATED AREA AND USE APPROVED PERSONAL PROTECTIVE EQUIPMENT SUCH AS DUST MASKS, THAT ARE SPECIFICALLY DESIGNED TO FILTER OUT MICROSCOPIC PARTICLES. SOME DUST CREATED BY POWER SANDING, SAWING, GRINDING AND OTHER CONSTRUCTION ACTIVITIES CONTAIN CHEMICALS KNOWN TO CAUSE CANCER, BIRTH DEFECTS OR OTHER REPRODUCTIVE HARM. SOME EXAMPLES OF THESE CHEMICALS ARE: CRYSTALLINE SILICA FROM BRICKS, CEMENT AND OTHER MASONARY PRODUCTS, ARSENIC AND CHROMIUM FROM CHEMICALLY TREATED LUMBER AND LEAD FROM LEAD BASED PAINTS.**

**YOUR RISK FROM EXPOSURE VARIES, DEPENDING ON HOW OFTEN YOU DO THIS TYPE OF WORK. TO REDUCE YOUR EXPOSURE TO THESE CHEMICALS WEAR PROTECTIVE MASKS AND CLOTHING.**

**26. KEEP CHILDREN, PETS AND BYSTANDERS AWAY WHILE OPERATING A PNEUMATIC TOOL. DISTRACTIONS CAN CAUSE YOU TO LOSE CONTROL. PROTECT OTHERS IN THE WORK AREA FROM DEBRIS SUCH AS METAL FILINGS AND SPARKS. PROVIDE BARRIERS OR SHIELDS AS NEEDED.**

**27. LUBRICATION - THIS TOOL REQUIRES A HIGH SPEED GREASE TO LUBRICATE THE PINION GEARS. ADD GREASE THROUGH THE GREASE FITTINGS AS NEEDED, APPROXIMATELY EVERY 8 HOURS.**

**28. THESE WARNINGS AND INSTRUCTIONS CAN NOT COVER ALL POSSIBLE CONDITIONS OR SITUATIONS. THE OPERATOR MUST UNDERSTAND THAT COMMON SENSE AND CAUTIONS ARE FACTORS WHICH CAN NOT BE BUILT INTO THE PRODUCT BUT MUST BE SUPPLIED BY THE OPERATOR.**

505 N. Railroad Ave. 33435

P.O. Box 1117 33425

Boynton Beach, Florida 33435

**SEE OUR CATALOG**

**at**

**www.taylorpneumatic.com**

PH. 561-732-1111

FAX 561-731-4412

Toll Free 800-805-8665