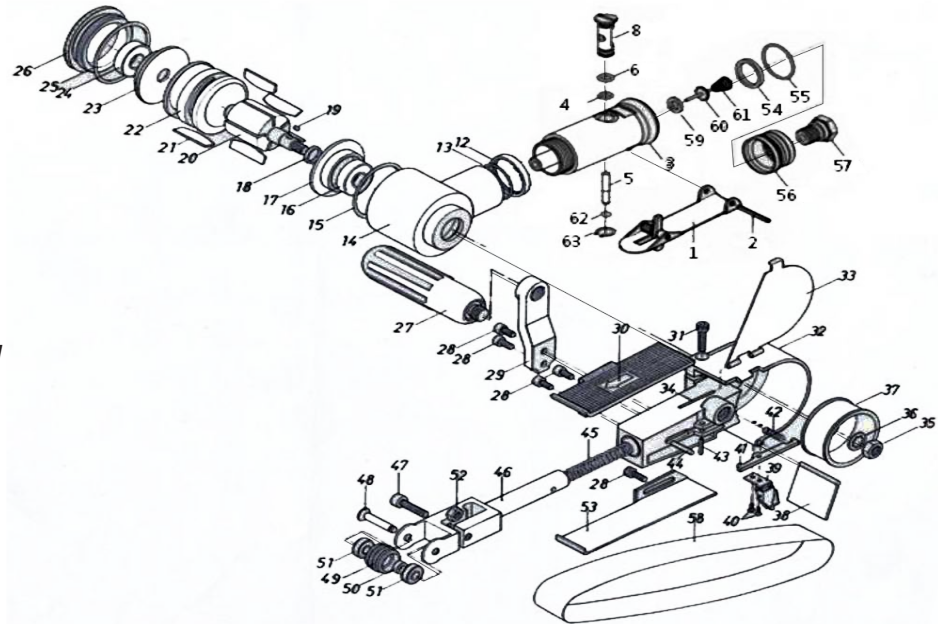


T-8030G Belt Sander

1-3/16" X 21 1/4"

Uses Sanding or Surface Prep Belts



OILING INSTRUCTIONS:
OIL AFTER EACH USE WITH FEW DROPS OF AIRTOOL OIL THROUGH THE AIR INLET. RUN FOR ONE SECOND TO COAT ALL INTERNAL PARTS

USE 90 PSI MAXIMUM

Ref #	Part #	Description	Qty.	Ref #	Part #	Description	Qty.
1	8030G01	Throttle Lever	1	35	8030G34	LockNut	1
2	8030G02	Lever Pin	1	36	8030G36	Washer	1
3	8030G03	Motor Housing	1	37	8030G37	Drive Pulley	1
4	8030G04	O-Ring	1	38	8030G38	Dust Cover	1
5	8030G05	Valve Stem	1	39	8030G39	Cover Latch	1
6	8030G06	O-Ring	1	40	8030G40	Cap Screw	2
8	8030G08	Regulator	1	41	8030G41	Stopper	1
12	8030G12	Lock Nut	1	42	8030G42	Spring	1
13	8030G13	O-Ring	1	43	8030G43	Roll Pin	1
14	8030G14	Housing	1	44	8030G44	Stopper Pin	1
15	8030G15	O-Ring	1	45	8030G45	Tension Spring	1
16	8030G16	Bearing	1	46	8030G46	Tension Arm	1
17	8030G17	Front End Plate	1	47	8030G47	Bolt	1
18	8030G18	Spacer	1	48	8030G48	Idler Shaft	1
19	8030G19	Key	1	49	8030G49	Idler Pulley Assembly	1
20	8030G20	Rotor	1	50	8030G50	Collar	1
21	8030G21	Rotor Blade (set of 5)	1set	51	8030G51	Bearing	2
22	8030G22	Cylinder	1	52	8030G52	Lock Nut	1
23	8030G23	Rear End Plate	1	53	8030G53	Shoe	1
24	8030G24	Bearing	1	54	8030G54	Silencer	1
25	8030G25	O-Ring	1	55	8030G55	O-Ring	1
26	8030G26	Motor Nut	1	56	8030G56	Air Deflector	1
27	8030G27	Handle	1	57	8030G57	Air Inlet	1
28	8030G28	Cap Screw	5	58	8030G58	Sanding Belt	1
29	8030G29	Handle Bracket	1	59	8030G59	Seal	1
30	8030G30	Finger Plate	1	60	8030G60	Valve Stem	1
31	8030G31	Adjust Screw	1	61	8030G61	Spring	1
32	8030G32	Guard Body	1	62	8030G62	O-Ring	1
33	8030G33	Guard	1	63	8030G63	Snap Ring	1
34	8030G34	Roll Pin	1				

505 N. Railroad Ave. 33435
P.O. Box 1117 33425
Boynton Beach, Florida

For Warranty Information &
Warranty Registration Visit
www.taylorpneumatic.com

Ph. (561) 732-1111
Fax (561) 731-4412
Toll Free 800-805-8665