

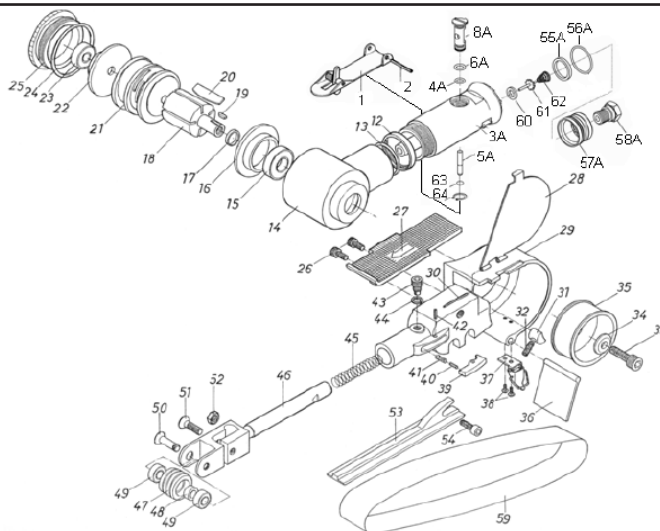
T-8020G BELT SANDER

3/4" X 20-1/2"

USES SANDING OR SURFACE PREP BELTS



OILING INSTRUCTIONS:
OIL AFTER EACH USE
WITH A FEW DROPS OF
AIRTOOL OIL THROUGH
THE AIR INLET. RUN FOR
1 SECOND TO COAT ALL
INTERNAL PARTS.



USE 90 PSI MAXIMUM

REF #	PART #	DESCRIPTION	QTY	REF #	PART #	DESCRIPTION	QTY
1	8020G01	THROTTLE LEVER	1	36	8020G36	DUST COVER	1
2	8020G02	LEVER PIN	1	37	8020G37	COVER LATCH	1
3A	8020G03A	HOUSING	1	38	8020G38	CAP SCREW	2
4A	8020G04A	O-RING	1	39	8020G39	TENSION BAR	1
5A	8020G05A	VALVE STEM	1	40	8020G40	LEVER PIN	1
6A	8020G06A	O-RING	1	41	8020G41	SPRING	1
7	8020G07	VALVE SPRING	1	42	8020G42	LEVER PIN	1
8A	8020G08A	REGULATOR	1	43	8020G43	SCREW	1
12	8020G12	LOCK NUT	1	44	8020G44	WASHER	1
13	8020G13	O-RING	1	45	8020G45	TENSION SPRING	1
14	8020G14	HOUSING	1	46	8020G46	TENSION ARM	1
15	8020G15	BEARING	1	47	8020G47	IDLER PULLEY	1
16	8020G16	FRONT END PLATE	1	48	8020G48	COLLAR	1
17	8020G17	SPACER	1	49	8020G49	BEARING	2
18	8020G18	ROTOR	1	50	8020G50	SCREW	1
19	8020G19	KEY	1	51	8020G51	SCREW	1
20	8020G20	ROTOR BLADE (SET OF 5)	1set	52	8020G52	LOCK NUT	1
21	8020G21	CYLINDER	1	53	8020G53	SHOE	1
22	8020G22	REAR END PLATE	1	54	8020G54	SCREW	1
23	8020G23	BEARING	1	55A	8020G55A	SILENCER	1
24	8020G24	O-RING	1	56A	8020G56A	O-RING	1
25	8020G25	CAP	1	57A	8020G57A	AIR DEFLECTOR	1
26	8020G26	SET SCREW	2	58A	8020G58A	AIR INLET	1
27	8020G27	FINGER PLATE	1	59	T-702080	80 GRIT BELT	1
28	8020G28	LID	1		T-7020100	100 GRIT BELT	1
29	8020G29	SPACER	1		T-702060	60 GRIT BELT (OPTIONAL)	-
30	8020G30	PIN	1		T-7020120	120 GRIT BELT (OPTIONAL)	-
31	8020G31	LOCK PIN	1	60	8020G60	VALVE SEAT	1
32	8020G32	SET SCREW	1	61	8020G61	VALVE STEM	1
33	8020G33	LOCK NUT	1	62	8020G62	SPRING	1
34	8020G34	WASHER	1	63	8020G63	O-RING	1
35	8020G35	DRIVE PULLEY	1	64	8020G64	C-CLIP	1

505 N. Railroad Ave. 33435
P.O. Box 1117 33425
Boynton Beach, FL

SEE MORE OF OUR CATALOG AT
www.taylorpneumatic.com

Ph. (561) 732-1111
Fax. (561) 731-4412
Toll Free (800) 805-8665