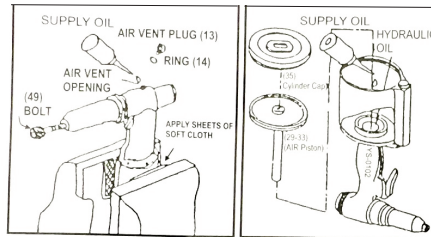


# T-7892/A 1/4" Heavy Duty Extended Nose Riveter

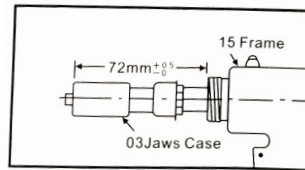


## Oiling Procedure

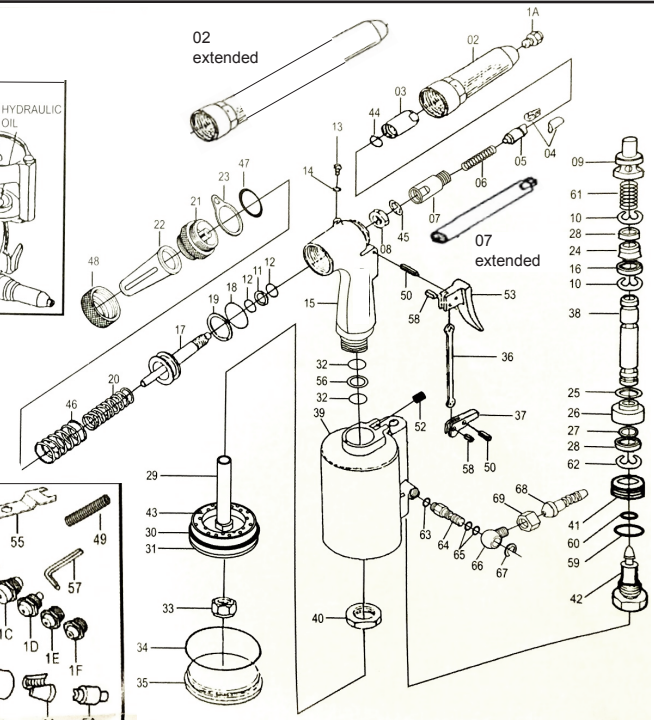
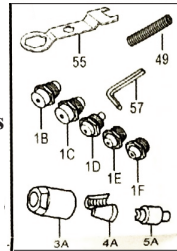
**OILING INSTRUCTIONS:**  
**OIL AFTER EACH USE WITH 1/2 TABLESPOON OF AIRTOOL OIL THROUGH THE AIR INLET. PULL THE TRIGGER ONCE OR TWICE TO COAT INTERNAL PARTS. FOLLOW INSTRUCTIONS ON BACK OF THIS SHEET TO MAINTAIN FLUID LEVEL IN HYDRAULIC PORTION OF TOOL.**



## Adjusting Length



## Auxiliary Parts (Included)



**USE 90 PSI MAXIMUM**

Ref.#	Part #	Description	Qty.	Ref.#	Part #	Description	Qty.
1A	789201AN	3/16" Nose Piece	1	31	789231N	Air Piston	1
1B	789201BN	5/32" Nose Piece	1	32	789232N	"O" Ring	2
1C	789201CN	1/8" Nose Piece	1	33	789233N	Lock Nut	1
1D	789201DN	3/32" Nose Piece	1	34	789234N	"O" Ring	1
1E	789201EN	1/8" Nose Piece	1	35	789235N	Cylinder Cap	1
1F	789201FN	3/32" Nose Piece	1	36	789236N	Trigger Rod	1
2	789202AN	Frame Head - extended	1	37	789237N	Trigger Lever	1
2	789202N	Frame Head - short	1	38	789238N	Valve Pusher	1
3	789203N	Jaws Case	1	39	789239N	Air Cylinder	1
4	789204N	Jaws	2	40	789240N	Frame Lock Nut	1
5	789205N	Jaw Pusher	1	41	789241N	Nut	1
6	789206N	Jaw Case Spring	1	42	789242N	Joint Nut	1
7	789207AN	Jaw Case Back-extended	1	43	789243N	Rubber Cushion	1
7	789207N	Jaw Case Back	1	44	789244N	Jaw Case "O" Ring	1
8	789208N	Case Lock Nut	1	45	789245N	Washer Ring	1
9	789209N	Valve Pusher	1	46	789246N	Return Spring	1
10	789210N	"E" Ring	2	47	789247N	Frame Cap O Ring	1
11	789211N	Back Up Ring	1	48	789248N	Catcher Nut	1
12	789212N	"O" Ring	2	49	789249N	M8 Bolt Plug	1
13	789213N	Plug	1	50	789250N	Pin	1
14	789214N	Packing	1	51	789251N	Lever Pin	1
15	789215N	Frame	1	52	789252N	Pin Nut	1
16	789216N	Valve Ring Seal	1	53	789253N	Trigger	1
17	789217N	Oil Piston	1	54	789254N	Wrench	1
18	789218N	"O" Ring	1	55	789255N	Wrench	1
19	789219N	Back Up Ring	1	56	789256N	Back Up Ring	1
20	789220N	Return Spring	1	57	789257N	Hex Wrench	1
21	789221N	Frame Cap	1	58	789258N	Trigger Pin	2
22	789222N	Catcher	1	59	789259N	"O" Ring	1
23	789223N	Hanging Clip	1	60	789260N	"O" Ring	1
24	789224N	Air Trigger Ring	1	61	789261N	Spring	1
25	789225N	"O" Ring	1	62	789262N	"E" Ring	1
26	789226N	Valve Seat	1	63	789263N	Throttle Valve Assembly	1
27	789227N	"O" Ring	1				
28	789228N	Ring Seal Washer	1				
29	789229N	Air Piston Rod	1				
30	789230N	"O" Ring	1				

505 N. Railroad Ave. 33435  
P.O. Box 1117 33425  
Boynton Beach, Florida

**SEE OUR CATALOG**  
at  
**www.taylorpneumatic.com**

PH. 561-732-1111  
FAX 561-731-4412  
Toll Free 800-805-8665

# **T-7892A**

## **1/4" Heavy Duty**

### **Long Nose Riveter**



505 N. Railroad Avenue  
P.O. Box 1117  
Boynton Beach, FL 33425  
Ph. 561-732-1111 Fax. 561-731-4412

#### **OPERATING INSTRUCTIONS FOR THE T-7892A RIVET TOOL**

- 1. Maintain fluid levels - Use 30 wt. oil. There are two methods of adding oil to the T-7892A.**
  - A. PREFERRED WAY:** Mount tool in vice with bottom cap # 35 up. Remove #35 with wrench #55. Remove entire piston (part #29, 30, 56, 31, 32, 33) as an assembly, by grasping #33 with a pair of pliers and pulling straight up. After the piston is removed fill with 30 weight non detergent oil to top of #40 nut (no oil should be in the #39 cylinder). Replace #35 Cap, and remove tool from the vice. With the tool in the upright position, remove #13 screw and excess oil will be vented. Wipe away excess oil, and replace #13. The total amount of oil should be 2-1/2 tablespoons.
  - B. Mount the T-7892A in a vice in the upright position, using cardboard or cloth to prevent marring the finish. Remove #13 oil fill screw. Remove #01 A, B, C, D, E, F or nosepiece. Screw in #49 bolt plug with #57 hex wrench to open the oil passage. Gradually add oil through the vent opening. Replace the fill screw #13. Remove #49 and replace with #01 nosepiece. Remove fill screw #13 to vent excess oil. (Too much oil in the system can cause a failure of the housing). A few drops of 30 wt oil or air tool oil through the air inlet every 10 to 15 minutes is recommended if no air line oiler is in place.**
- 2. Adjusting the stroke - Remove #02 by using #55 wrench. For maximum stroke, loosen nut #08 and thread the nut all the way onto #17 piston. Then loosen #03 and #07 and thread them all the way to #08. Hold #08 with a wrench and tighten #3. For a shorter stroke, adjust #08 so that it is away from the shoulder of #17 by two or more threads, depending on how short you want the stroke to be.**
- 3. Always use the correct size nosepiece for the rivet you are using. It is a good idea to use a silicone oil such as WD 40 to lubricate the jaws #04 when pulling quantities of rivets, as there may be a build up of metal particles that could cause mandrels to stick in the jaws.**
- 4. Air pressure - The maximum pressure should be 90 PSI. A higher pressure could cause damage to your tool. Using the lowest pressure possible for your application will extend the life of your tool dramatically.**
- 5. As with all tools, make sure that all parts are tight from time to time, as vibration from use may loosen components.**
- 6. Mandrels - The T-7892A comes complete with the #22 mandrel catcher. Once a rivet has been popped, and the next rivet is mounted in the nosepiece, the last mandrel will slide into the #22. To remove mandrels, turn the tool upside down and they will fall out of the slot in #22, or remove #22 completely and empty.**