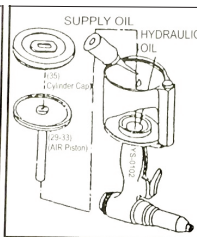
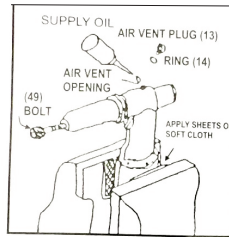


T-7891/A 3/16" Heavy Duty Extended Nose Riveter

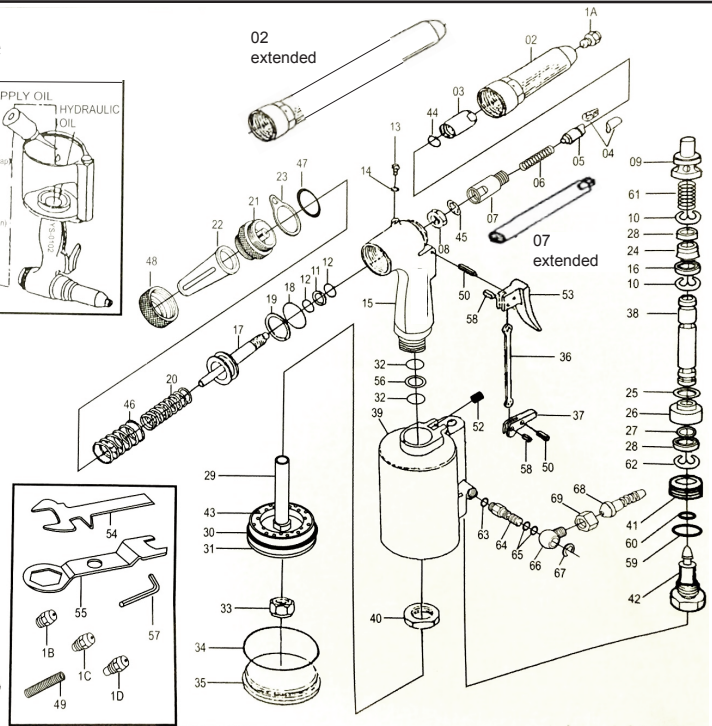
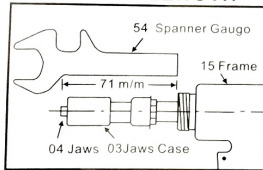


Oiling Procedure

OILING INSTRUCTIONS:
OIL AFTER EACH USE WITH A COUPLE DROPS OF AIRTOOL OIL THROUGH THE AIR INLET. PULL THE TRIGGER ONCE OR TWICE TO COAT INTERNAL PARTS. FOLLOW INSTRUCTIONS ON BACK OF THIS SHEET TO MAINTAIN FLUID LEVEL IN HYDRAULIC PORTION OF TOOL.



ADJUSTING LENGTH



USE 90 PSI MAXIMUM

Ref.#	Part #	Description	Qty.	Ref.#	Part #	Description	Qty.
1A	789101AN	3/16" Nose Piece	1	31	789131N	Air Piston	1
1B	789101BN	5/32" Nose Piece	1	32	789132N	"O" Ring	2
1C	789101CN	1/8" Nose Piece	1	33	789133N	Lock Nut	1
1D	789101DN	3/32" Nose Piece	1	34	789134N	"O" Ring	1
2	789102L	Frame Head - extended	1	35	789135N	Cylinder Cap	1
2	789102N	Frame Headd - short	1	36	789136N	Trigger Rod	1
3	789103N	Jaws Case	1	37	789137N	Trigger Lever	1
4	789104N	Jaws	2	38	789138N	Valve Pusher	1
5	789105N	Jaw Pusher	1	39	789139N	Air Cylinder	1
6	789106N	Jaw Case Spring	1	40	789140N	Frame Lock Nut	1
7	789107L	Jaw Case Back-extended	1	41	789141N	Nut	1
8	789108N	Case Lock Nut	1	42	789142N	Joint Nut	1
9	789109N	Valve Pusher	1	43	789143N	Rubber Cushion	1
10	789110N	"E" Ring	2	44	789144N	Jaw Case "O" Ring	1
11	789111N	Back Up Ring	1	45	789145N	Washer Ring	1
12	789112N	"O" Ring	2	46	789146N	Return Spring	1
13	789113N	Plug	1	47	789147N	Frame Cap O Ring	1
14	789114N	Packing	1	48	789148N	Catcher Nut	1
15	789115N	Frame	1	49	789149N	M8 Bolt Plug	1
16	789116N	Valve Ring Seal	1	50	789150N	Pin	1
17	789117N	Oil Piston	1	51	789151N	Lever Pin	1
18	789118N	"O" Ring	1	52	789152N	Pin Nut	1
19	789119N	Back Up Ring	1	53	789153N	Trigger	1
20	789120N	Return Spring	1	54	789154N	Wrench	1
21	789121N	Frame Cap	1	55	789155N	Wrench	1
22	789122N	Catcher	1	56	789156N	Back Up Ring	1
23	789123N	Hanging Clip	1	57	789157N	Hex Wrench	1
24	789124N	Air Trigger Ring	1	58	789158N	Trigger Pin	2
25	789125N	"O" Ring	1	59	789159N	"O" Ring	1
26	789126N	Valve Seat	1	60	789160N	"O" Ring	1
27	789127N	"O" Ring	1	61	789161N	Spring	1
28	789128N	Ring Seal Washer	1	62	789162N	"E" Ring	1
29	789129N	Air Piston Rod	1	63	789163N	Throttle Valve Assembly	1
30	789130N	"O" Ring	1				

505 N. Railroad Ave. 33435
P.O. Box 1117 33425
Boynton Beach, Florida

FOR WARRANTY INFORMATION & WARRANTY REGISTRATION VISIT
www.taylorpneumatic.com

1122 TPTC / all rights reserved / COPYRIGHT 2022 /final

PH. 561-732-1111
FAX 561-731-4412
Toll Free 800-805-8665

***Always disconnect tools
from the air supply before
servicing.***



505 N. Railroad Avenue
P.O. Box 1117
Boynton Beach, FL 33425
Ph. 561-732-1111 Fax. 561-731-4412

OPERATING INSTRUCTIONS FOR THE T-7891A RIVET TOOL

1. Maintain fluid levels - Use 30 wt. oil. There are two methods of adding oil to the T-7891A.
 - A. **PREFERRED WAY:** Mount tool in vice with bottom cap # 35 up. Remove #35 with wrench #55. Remove entire piston (part #29, 30, 31, 32, 33, 34) as an assembly, by grasping #33 with a pair of pliers and pulling straight up. After the piston is removed fill with 30 weight non detergent oil to top of #40 nut (no oil should be in the #39 cylinder). Replace #35 Cap, and remove tool from the vice. With the tool in the upright position, remove #13 screw and excess oil will be vented. Wipe away excess oil, and replace #13. The total amount of oil should be 2-1/2 tablespoons.
 - B. Mount the T-7891A in a vice in the upright position, using cardboard or cloth to prevent marring the finish. Remove #13 oil fill screw. Remove #01A, B, C or D nosepiece. Screw in #49 bolt plug with #57 hex wrench to open the oil passage. Gradually add oil through the vent opening. Replace the fill screw #13. Remove #49 and replace with #01 nosepiece. Remove fill screw #13 to vent excess oil. (Too much oil in the system can cause a failure of the housing).
A few drops of 30 wt oil or air tool oil through the air inlet every 10 to 15 minutes is recommended if no air line oiler is in place.
2. Adjusting the stroke - Remove #02 by using #55 wrench. For maximum stroke, loosen nut #08 and thread the nut all the way onto #17 piston. Then loosen #03 and #07 and thread them all the way to #08. Hold #08 with a wrench and tighten #3. For a shorter stroke, adjust #08 so that it is away from the shoulder of #17 by two or more threads, depending on how short you want the stroke to be.
3. Always use the correct size nosepiece for the rivet you are using. It is a good idea to use a silicone oil such as WD 40 to lubricate the jaws #04 when pulling quantities of rivets, as there may be a build up of metal particles that could cause mandrels to stick in the jaws.
4. Air pressure - The maximum pressure should be 90 PSI. A higher pressure could cause damage to your tool. Using the lowest pressure possible for your application will extend the life of your tool dramatically.
5. As with all tools, make sure that all parts are tight from time to time, as vibration from use may loosen components.
6. Mandrels - The T-7891A comes complete with the #22 mandrel catcher. Once a rivet has been popped, and the next rivet is mounted in the nosepiece, the last mandrel will slide into the #22. To remove mandrels, turn the tool upside down and they will fall out of the slot in #22, or remove #22 completely and empty.