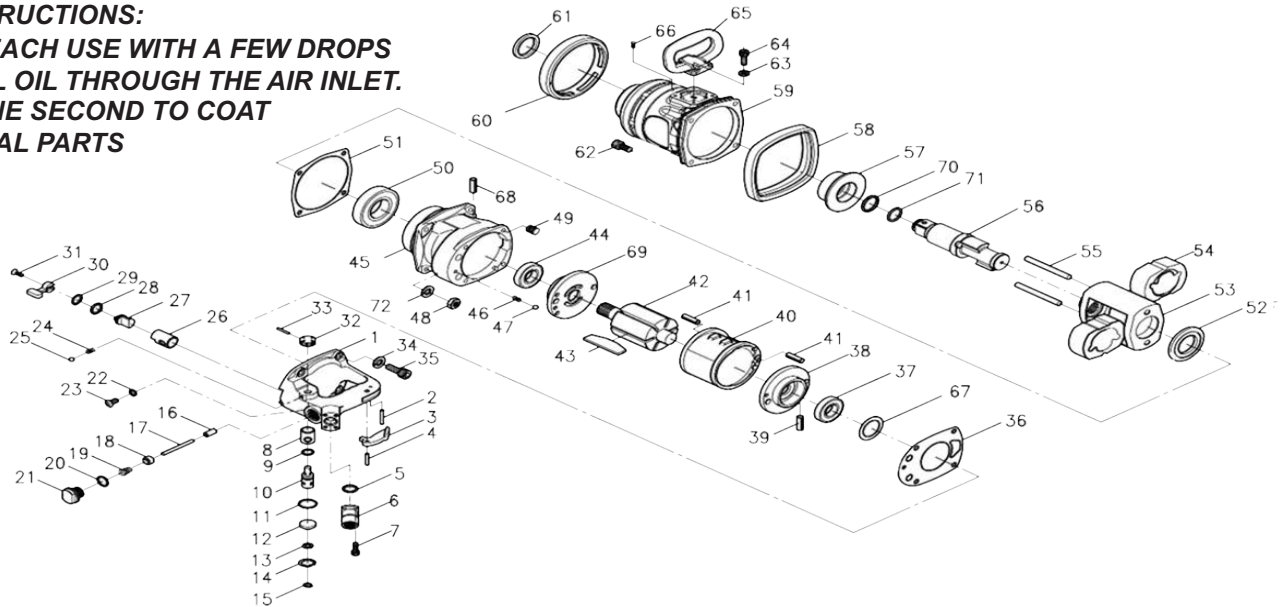


T-7799L,L-6 1" Super Duty Hi Torque Impact Wrench



OILING INSTRUCTIONS:

OIL AFTER EACH USE WITH A FEW DROPS OF AIR TOOL OIL THROUGH THE AIR INLET. RUN FOR ONE SECOND TO COAT ALL INTERNAL PARTS



USE 90 PSI MAXIMUM

Ref #	Part #	Description	Qty.	Ref #	Part #	Description	Qty.
1	7799L01	Handle includes (#1-#33)	1	36	7799L36	Rear Gasket	1
2	7799L02	Pin	1	37	7799L37	Bearing	1
3	7799L03	Trigger (Inside)	1	38	7799L38	End plate	1
3	7799L03B	Trigger (Outside) OPTIONAL	1	39	7799L39	Spring Pin	1
4	7799L04	Spring Pin	1	40	7799L40	Cylinder	1
5	7799L05	O-ring	1	41	7799L41	Spring Pin	2
6	7799L06	Air inlet	1	42	7799L42	Rotor	1
7	7799L07	Cap Screw	4	43	7799L43	Rotor Blade (set of 6)	1 set
8	7799L08	Regulator Bushing	1	44	7799L44	Bearing	1
9	7799L09	O-ring	1	45	7799L45	Motor Housing	1
10	7799L10	Regulator	1	46	7799L46	Spring	1
11	7799L11	O-ring	1	47	7799L47	Ball	1
12	7799L12	Regulator Valve Gasket	1	48	7799L48	Lock Nut	4
13	7799L13	Washer	1	49	7799L49	Threaded Insert	4
14	7799L14	Snap Ring	1	50	7799L50	Bearing	1
15	7799L15	Snap Ring	1	51	7799L51	Front Gasket	1
16	7799L16	Bushing	1	52	7799L52	Rear Washer	1
17	7799L17	Valve Stem	1	53	7799L53	Hammer Cage	1
18	7799L18	Throttle valve	1	54	7799L54	Hammer	2
19	7799L19	Spring	1	55	7799L55	Hammer Pin	2
20	7799L20	O-ring	1	56	7799L56	Anvil	1
21	7799L21	Plug	1	56B	7799L56B	Extended Anvil 9" (not shown)	1
22	7799L22	O-ring	1	57	7799L57	Anvil Bushing	1
23	7799L23	Screw	1	58	7799L58	Rubber Bumper	1
24	7799L24	Spring	1	59	7799L59	Hammer Case	1
25	7799L25	Ball	1	60	7799L60	Front Bumper	1
26	7799L26	Reverse Valve Bushing	1	61	7799L61	Oil Seal	1
27	7799L27	Reverse Valve	1	62	7799L62	Cap Screw	4
28	7799L28	O-ring	1	63	7799L63	Spring Washer	4
29	7799L29	Snap Ring	1	64	7799L64	Cap Screw	4
30	7799L30	Reverse Lever	1	65	7799L65	D Handle	1
31	7799L31	Screw	1	66	7799L66	Set Screw	1
32	7799L32	Regulator Knob	1	67	7799L67	Gasket	1
33	7799L33	Spring Pin	1	68	7799L68	Spring Pin	1
34	7799L34	Spring Washer	12	69	7799L69	Front End Plate	1
35	7799L35	Cap Screw	4	70	7799L70	Anvil Collar	1
				71	7799L71	O-Ring	1

505 N. Railroad Ave. 33435
P.O. Box 1117 33424
Boynton Beach, Florida

FOR WARRANTY INFORMATION &
WARRANTY REGISTRATION VISIT
www.taylorpneumatic.com

1022TPTC / all rights reserved / COPYRIGHT 2022 / final

Ph. (561) 732-1111
Fax (561) 731-4412
Toll Free 800-805-8665

General Instructions Impact Wrenches

PLEASE READ AND FOLLOW ALL WARNINGS

An impact wrench is an amazing time saving machine. If its strengths and weaknesses are taken into consideration it can be used for years of trouble free service. Always use 90 PSI Maximum AT THE TOOL. Using higher air pressures can prematurely wear parts and strain parts not designed for the higher pressure. In most instances, within the first five seconds of use, an impact wrench develops its maximum torque. If a fastener is still not moving try penetrating oil or a larger impact wrench. Always use impact sockets. Always oil your airtools before storing. Put a few spoonfuls of airtool oil in the air inlet and run the tool for a second or two to coat internal parts.

OILING INSTRUCTIONS:

OIL AFTER EACH USE WITH 2 OR 3 TABLESPOONS OF AIRTOOL OIL THROUGH THE AIR INLET. RUN FOR ONE SECOND TO COAT ALL INTERNAL PARTS. 1/4" TO 1/2" IMPACTS USUALLY USE 30 WT. NON DETERGENT OIL IN THE HAMMER CASE. WRENCHES 3/4" TO 1-1/2" USUALLY USE GREASE IN THE HAMMER CASE.

IMPACT WRENCHES - GENERAL INSTRUCTIONS

1. ALWAYS DISCONNECT THE TOOL FROM AIR SOURCE WHEN CHANGING ACCESSORIES OR SERVICING THE TOOL.
2. CHECK ALL FASTENERS DAILY. BOLTS MUST BE KEPT TIGHT TO MAINTAIN SAFETY AND TOP TOOL OPERATING PERFORMANCE.
3. STAY IN CONTROL OF THE IMPACT WRENCH
4. ALWAYS USE IMPACT SOCKETS - STANDARD SOCKETS MAY BE BRITTLE AND BREAK CAUSING DAMAGE TO THE OPERATOR OR THE TOOL.
5. VIBRATION MAY BE HARMFUL TO YOUR ARMS AND HANDS. WEAR PROTECTION.
6. INSPECT THE TOOL AND AIR SUPPLY AND AIR HOSE ON A REGULAR BASIS.
7. DO NOT MAKE CONTACT WITH ELECTRICAL LINES.
8. LEAVE TRIGGER OFF BEFORE CONNECTING THE TOOL TO THE AIR SUPPLY. AVOID ACCIDENTAL STARTS.
9. WEAR THE PROPER CLOTHING. DO NOT WEAR JEWELRY, LOOSE CLOTHING, OR LONG HAIR AS IT CAN GET CAUGHT IN ROTATING PARTS. KEEP GLOVES AWAY FROM ROTATING PARTS.
10. DO NOT WORK IN HAZARDOUS ATMOSPHERES WHERE SPARKS COULD IGNITE OR DETONATE FUMES.
11. WATCH WHAT YOU ARE DOING. USE COMMON SENSE WHEN OPERATING PNEUMATIC TOOLS. DO NOT USE PNEUMATIC TOOLS WHEN TIRED OR UNDER THE INFLUENCE OF MEDICATION, ALCOHOL OR DRUGS. SERIOUS PERSONAL INJURY MAY RESULT FROM A MOMENTS INATTENTION.
12. USE 90 PSI AT THE TOOL. USE 3/8", 1/2" or 3/4" HOSE OR LARGER WITH FITTINGS 9/32 MINIMUM I.D. AS SPECIFIED
13. DO NOT WORK IN HAZARDOUS ATMOSPHERES WHERE SPARKS COULD IGNITE OR DETONATE FUMES.
14. WATCH WHAT YOU ARE DOING. USE COMMON SENSE WHEN OPERATING PNEUMATIC TOOLS. DO NOT USE PNEUMATIC TOOLS WHEN TIRED OR UNDER THE INFLUENCE OF MEDICATION, ALCOHOL OR DRUGS. SERIOUS PERSONAL INJURY MAY RESULT FROM A MOMENTS INATTENTION.
15. USE 90 PSI AT THE TOOL. USE 3/8", 1/2" or 3/4" HOSE OR LARGER WITH FITTINGS 9/32 MINIMUM I.D. AS SPECIFIED
16. ONLY USE CLEAN DRY COMPRESSED AIR. NEVER USE OXYGEN, CARBON DIOXIDE, COMBUSTIBLE GASES OR ANY OTHER BOTTLED GAS TO POWER THIS TOOL.
17. STORE TOOLS IN A CLEAN DRY ENVIRONMENT.
18. DO NOT USE DAMAGED TOOLS - MARK, AND RETURN DAMAGED TOOLS FOR SERVICE.
19. NEVER FORCE THE TOOL. LET THE TOOL DO THE WORK.
20. STOP USE IMMEDIATELY IF TOOL IS MAKING AN UNUSUAL NOISE OR VIBRATION. HAVE TOOL CHECKED BY PROFESSIONAL TECHNICIAN.
21. KEEP CHILDREN, PETS AND BYSTANDERS AWAY WHILE OPERATING A PNEUMATIC TOOL. DISTRACTIONS CAN CAUSE YOU TO LOSE CONTROL.
22. THESE WARNINGS AND INSTRUCTIONS CAN NOT COVER ALL POSSIBLE CONDITIONS OR SITUATIONS. THE OPERATOR MUST UNDERSTAND THAT COMMON SENSE AND CAUTIONS ARE FACTORS WHICH CAN NOT BE BUILT INTO THE PRODUCT BUT MUST BE SUPPLIED BY THE OPERATOR.

ADDITIONAL INFORMATION IS AVAILABLE FROM:

**AMERICAN NATIONAL STANDARDS INSTITUTE
11 WEST 42ND ST.
NEW YORK, NY 10036**

REQUEST A COPY OF ANSI B186.1 SAFETY CODE FOR PORTABLE AIR TOOLS.

LIMITED LIFETIME WARRANTY

Most products of Taylor Pneumatic are warranted to be free from defects in material and workmanship for the life of the tool. This warranty applies to the original purchaser only. This warranty does not cover tools that have been abused, misused, modified, not properly lubricated or to normal wear and tear. Taylor Pneumatic will at its option repair or replace the defective product free of charge except for shipping. Taylor Pneumatics sole liability and your exclusive remedy under this warranty is limited to the repair or replacement of the defective product. There are no other warranties expressed or implied and Taylor Pneumatic shall not be liable for incidental, consequential, or special damages, expenses or costs except as described above. WARRANTY VOID IF TOOL IS DISASSEMBLED. Return tools to **Taylor Pneumatic**. Be sure to include your name, address, proof of purchase and description of the suspected defect.

This warranty applies to the basic tool. It does not apply to wear and tear on accessories or consumables such as drill chucks, backing pads for sanders, punch and dies for nibblers, spray gun cups or accessories from a kit.