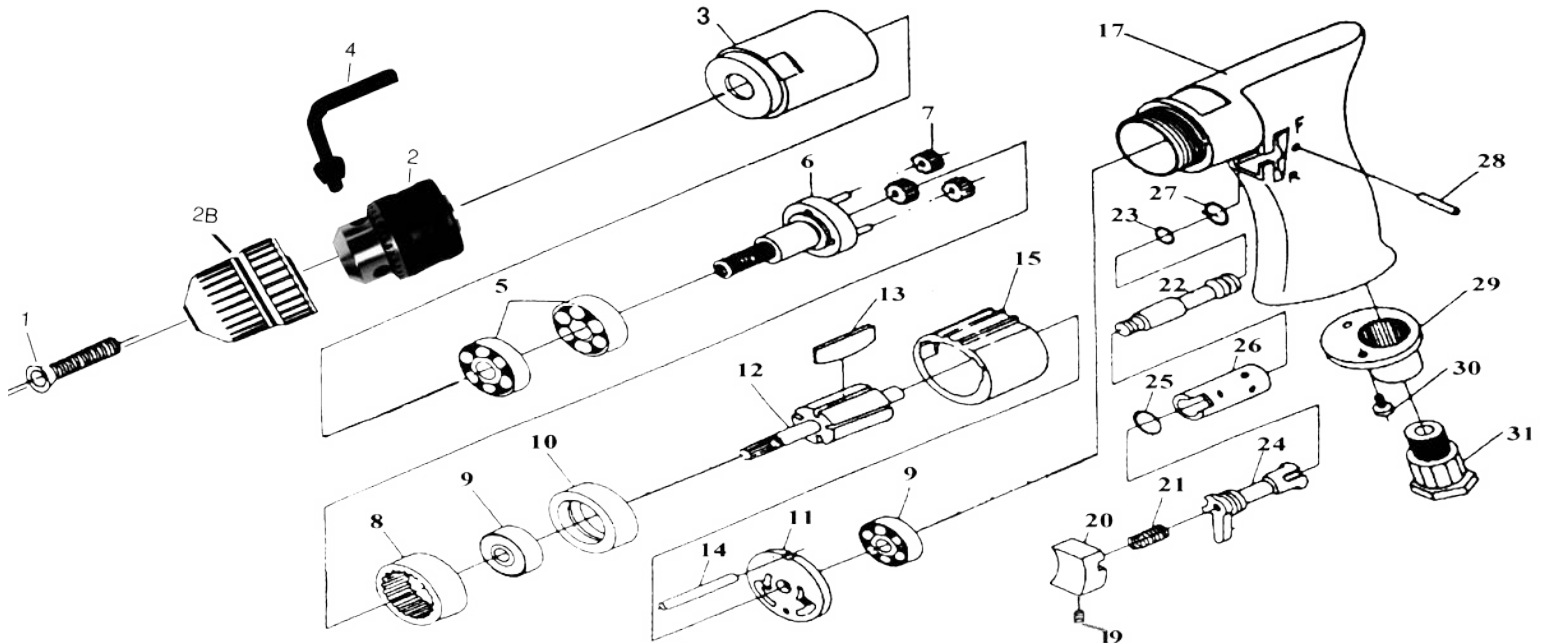


# T-7788K Reversible Drill W/ Keyless Chuck

# T-7788R Reversible Drill



**OILING INSTRUCTIONS:**  
OIL AFTER EACH USE WITH A FEW DROPS OF AIRTOOL OIL THROUGH THE AIR INLET. RUN FOR 1 SECOND TO COAT ALL INTERNAL PARTS.

### USE 90 PSI MAXIMUM

REF#	PART#	DESCRIPTION	QTY	REF#	PART#	DESCRIPTION	QTY
1	7788R01N	SCREW	1	15	7788R15N	CYLINDER	1
2	T-7788-A	3/8" CHUCK (KG)	1	17	7788R01A	COMPLETE HANDLE	1
2B	T-7788-KC	3/8" KEYLESS CHUCK	1	19	7788R19N	SET SCREW	1
3	7788R03N	GEAR HOUSING	1	20	7788R20N	TRIGGER	1
4	T-7788-B	3/8" KEY (KG)	1	21	7788R21N	VALVE SPRING	1
5	7788R05N	BEARING	2	22	7788R22N	THROTTLE VALVE	1
6	7788R06N	PLANET CARRIER WITH PINS	1	23	7788R23N3	O-RING	1
7	7788R07N	PLANET GEAR	3	24	7788R24N	REVERSE VALVE	1
8	7788R08N	INTERNAL GEAR	1	25	7788R25N	O-RING	1
9	7788R09N	BEARING	2	26	7788R26N	REVERSE VALVE BUSHING	1
10	7788R10N	BEARING CASE	1	27	7788R27N	O-RING	1
11	7788R11 N	END PLATE	1	28	7788R28N	PIN	1
12	7788R12N	ROTOR	1	29	7788R29N	EXHAUST DEFLECTOR	1
13	7788R13N	ROTOR BLADE (5 PER SET)	1set	30	7788R30N	SCREW	2
14	7788R14N	MOTOR PIN	1	31	7788R31N	AIR INLET	1

505 N Railroad Ave. 33435  
P.O. Box 1117 33425  
Boynton Beach, FL

FOR WARRANTY INFORMATION  
AND REGISTRATION VISIT  
[www.taylorpneumatic.com](http://www.taylorpneumatic.com)

Ph. (561) 732-1111  
Fax. (561) 731-4412  
Toll Free (800) 805-8665