

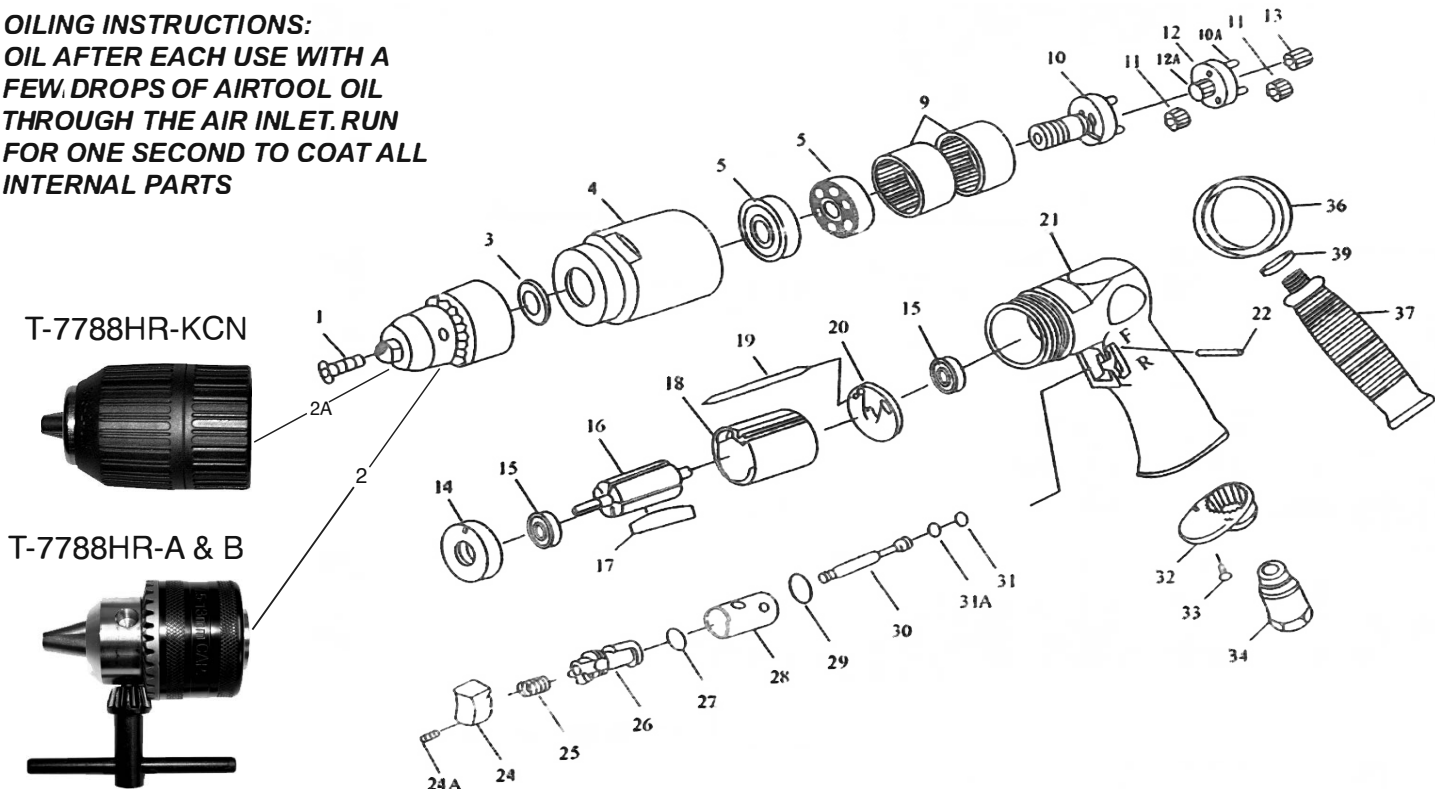
T-7788HR 1/2" Reversible Drill

T-7788HRK 1/2" Reversible Drill

w/ Keyless Chuck



OILING INSTRUCTIONS:
OIL AFTER EACH USE WITH A FEW DROPS OF AIRTOOL OIL THROUGH THE AIR INLET. RUN FOR ONE SECOND TO COAT ALL INTERNAL PARTS



USE 90 PSI MAXIMUM

| Ref # | Part # | Description | Qty. | Ref # | Part # | Description | Qty. |
|-------|------------|------------------------|-------|-------|-------------|--|------|
| 1 | 7788HR01N3 | Screw | 1 | 20 | 7788HR20N3 | End Plate | 1 |
| 2 | 7788HR-A | Drill Chuck | 1 | 21 | 7788HR21N3 | Motor Housing | 1 |
| | 7788HR-B | Drill Chuck Key | 1 | 22 | 7788HR22N3 | Pin | 1 |
| 2A | 7788HR-KCN | Keyless Drill Chuck | 1 | 24 | 7788HR24N3 | Trigger | 1 |
| 3 | 7788HR03N3 | Chuck Spacer | 1 | 24A | 7788HR24A | Set Screw | 1 |
| 4 | 7788HR04N3 | Gear Housing | 1 | 25 | 7788HR25N3 | Valve Spring | 1 |
| 5 | 7788HR05N3 | Bearing | 2 | 26 | 7788HR26N3 | Reverse Lever | 1 |
| 9 | 7788HR09N3 | Internal Gear | 2 | 27 | 7788HR27N3 | O-Ring | 1 |
| 10 | 7788HR10N3 | Spindle | 1 | 28 | 7788HR28N3 | Reverse Bushing | 1 |
| 10A | 7788HR10A | Pin | 3 | 29 | 7788HR29N3 | O-Ring | 1 |
| 11 | 7788HR11N3 | Idler Gear | 6 | 30 | 7788HR30N3 | Valve Stem | 1 |
| 12 | 7788HR12N3 | Reduction Spindle | 1 | 31 | 7788HR31N3 | O-Ring | 1 |
| 12A | 7788HR12A | Reduction Gear | 1 | 31A | 7788HR31A | O-Ring | 1 |
| 13 | 7788HR13N3 | Pinion Gear | 1 | 32 | 7788HR32N3 | Exhaust Deflector | 1 |
| 14 | 7788HR14N3 | Spacer | 1 | 33 | 7788HR33N3 | Screw | 2 |
| 15 | 7788HR15N3 | Bearing | 2 | 34 | 7788HR34N3 | Air Inlet | 1 |
| 16 | 7788HR16N3 | Rotor | 1 | 36 | 7788HR36N3 | Clamp Ring | 1 |
| 17 | 7788HR17N3 | Rotor Blade (set of 5) | 1 set | 37 | 7788HR37N3 | Side Handle | 1 |
| 18 | 7788HR18N3 | Cylinder | 1 | 37N3A | 7788HR37N3A | Side Handle Assembly (Part #'s 36N3, 37N3, 39N3) | 1 |
| 19 | 7788HR19N3 | Pin | 1 | 39 | 7788HR39N3 | Spacer | 1 |

505 N. Railroad Ave. 33435
P.O. Box 1117 33425
Boynton Beach, Florida

For Warranty Information &
Warranty Registration visit
www.taylorpneumatic.com

Ph. (561) 732-1111
Fax (561) 731-4412
Toll Free 800-805-8665