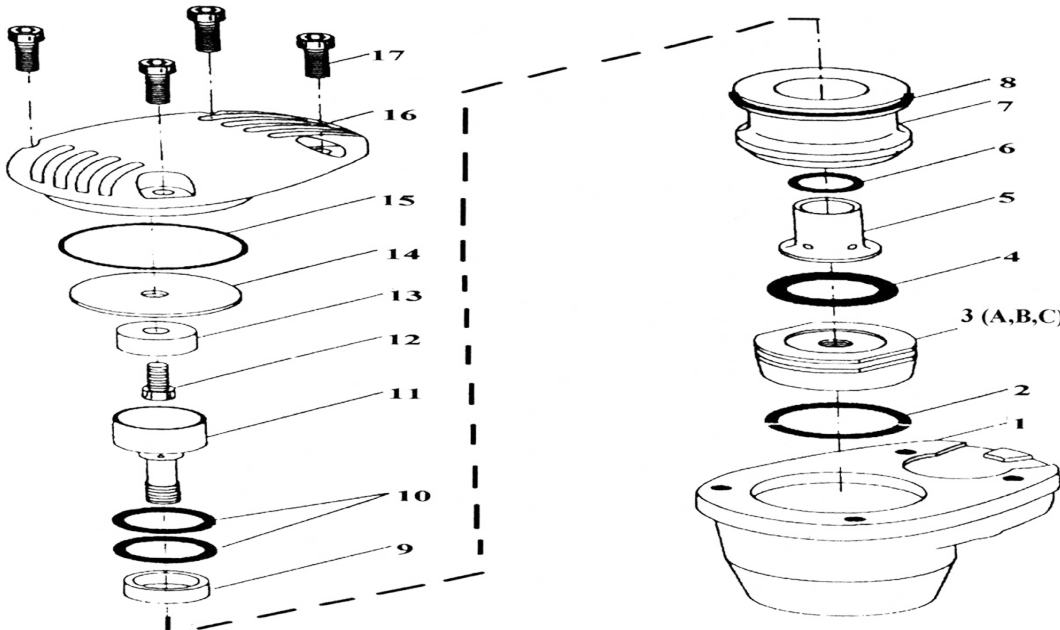
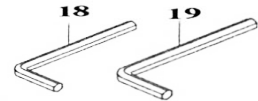


T-7781 Hammer



OILING INSTRUCTIONS: OIL AFTER EACH USE WITH A FEW DROPS OF AIR TOOL OIL THROUGH THE AIR INLET. RUN FOR ONE SECOND TO COAT ALL INTERNAL PARTS



USE 90 PSI MAXIMUM

Ref #	Part #	Description	Qty.	Ref #	Part #	Description	Qty.
1	778101	Housing	1	14	778114	Exhaust Seat	1
2	778102	O-Ring	1	15	778115	O-Ring	1
3A	778103A	Hammer Tip (Hard Plastic)	1	16	778116	Cap	1
3B	778103B	Hammer Tip (Aluminium)	1	17	778117	Screw	4
3C	778103C	Hammer Tip (Steel)	1	18	778118	4 mm Hex Wrench	1
4	778104	Stroke Control Spacer	1	19	778119	1/4" Hex Wrench	1
5	778105	Sleeve	1				
6	778106	O-Ring	1				
7	778107	Valve	1				
8	778108	O-Ring	1				
9	778109	Bumper	1				
10	778110	O-Ring	2				
11	778111	Stem	1				
12	778112	Screw	1				
13	778113	Plug	1				

505 N. Railroad Ave. 33435
P.O. Box 1117 33425
Boynton Beach, Florida

FOR WARRANTY INFORMATION &
WARRANTY REGISTRATION VISIT
www.taylorpneumatic.com

Ph. (561) 732-1111
Fax (561) 731-4412
Toll Free 800-805-8665