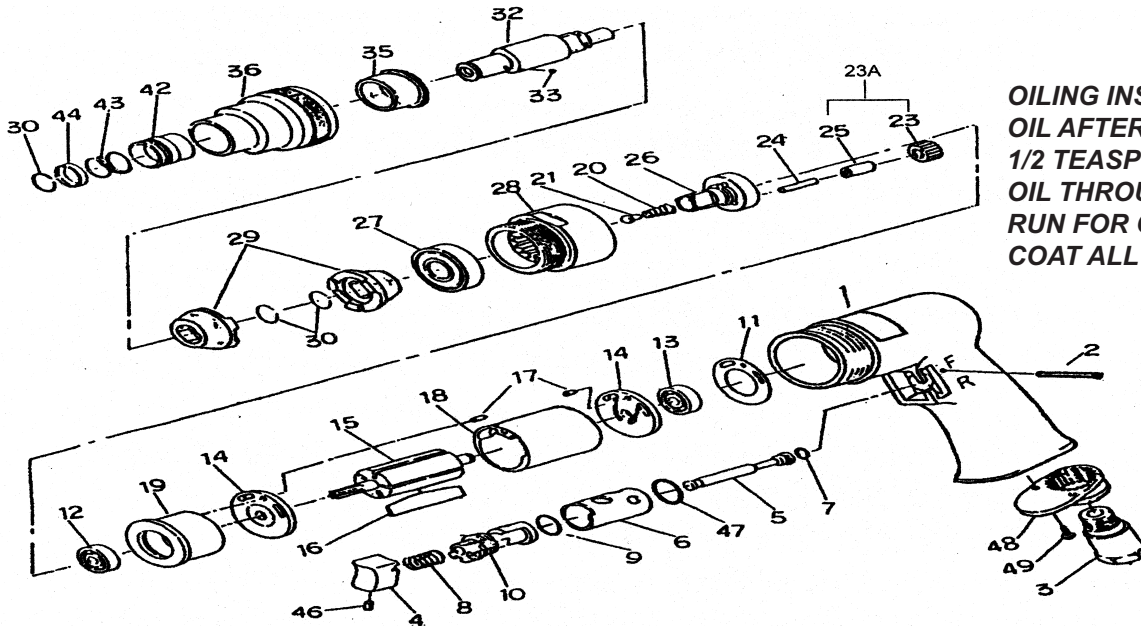


T-7766 Positive Clutch Screwdriver



OILING INSTRUCTIONS:
 OIL AFTER EACH USE WITH
 1/2 TEASPOON OF AIRTOOL
 OIL THROUGH THE AIR INLET.
 RUN FOR ONE SECOND TO
 COAT ALL INTERNAL PARTS

USE 90 PSI MAXIMUM

Ref #	Part #	Description	Qty.	Ref #	Part #	Description	Qty.
1	776601	Motor Housing	1	21	776621	Spring Guide	1
2	776602	Pin	1	23	776623	Planet Gear	3
3	776603	Air Inlet	1	23A	776623A	Planet Gear & Spacer	3
4	776604	Trigger	1	24	776624	Pin	3
5	776605	Valve Stem	1	25	776625	Spacer	3
6	776606	Reverse Bushing	1	26	776626	Work Spindle	1
7	776607	O-Ring	1	27	776627	Bearing	1
8	776608	Valve Spring	1	28	776628	Clamp Nut	1
9	776609	O-Ring	1	29	776629	Drive Dog	2
10	776610	Reverse Lever	1	30	776630	Retaining Ring	3
11	776611	Motor Gasket	1	32	776632	Cam Spindle	1
12	776612	Bearing	1	33	776633	Steel Ball	1
13	776613	Bearing	1	35	776635	Clutch Bushing	1
14	776614	End Plate	2	36	776636	Clutch Housing	1
15	776615	Rotor	1	42	776642	Ball Retainer	1
16	776616	Rotor Blades (5 per set)	1 set	43	776643	Spring	1
17	776617	Pin	2	44	776644	Washer	1
18	776618	Cylinder	1	46	776646	Set Screw	1
19	776619	Front End Plate	1	47	776647	O-Ring	1
20	776620	Spring	1	48	776648	Exhaust Diffuser	1
				49	776649	Screw	2

505 N. Railroad Ave. 33435
 P.O. Box 1117 33425
 Boynton Beach, Florida

SEE OUR CATALOG
 at
www.taylorpneumatic.com

0116TPTC /all rights reserved /COPYRIGHT 2016 / final

Ph. (561) 732-1111
 Fax (561) 731-4412
 Toll Free 800-805-8665