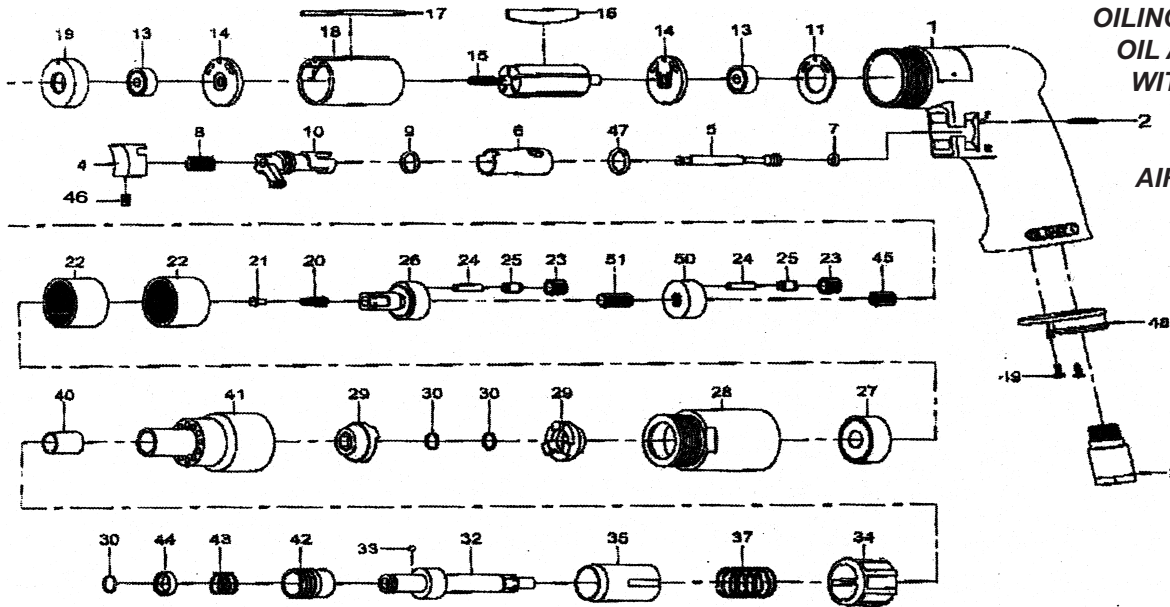


T-7766HR Positive Clutch Screwdriver 800RPM



OILING INSTRUCTIONS:
OIL AFTER EACH USE
WITH 1/2 TEASPOON
OF AIRTOOL OIL
THROUGH THE
AIR INLET. RUN FOR
ONE SECOND
TO COAT ALL
INTERNAL PARTS

USE 90 PSI MAXIMUM

Ref #	Part #	Description	Qty.	Ref #	Part #	Description	Qty.
1	7766HR01	Motor Housing	1	25	7766HR25	Bushing	6
2	7766HR02	Pin	1	26	7766HR26	Work Spindle	1
3	7766HR03	Air Inlet	1	27	7766HR27	Bearing	1
4	7766HR04	Trigger	1	28	7766HR28	Clamp Nut	1
5	7766HR05	Valve Stem	1	29	7766HR29	Drive Dog	2
6	7766HR06	Reverse Bushing	1	30	7766HR30	Retaining Ring	3
7	7766HR07	O-Ring	1	32	7766HR32	Cam Spindle	1
8	7766HR08	Valve Spring	1	33	7766HR33	Steel Ball	1
9	7766HR09	O-Ring	1	34	7766HR34	Regulator Nut	1
10	7766HR10	Reverse Lever	1	35	7766HR35	Regulator	1
11	7766HR11	Motor Gasket	1	37	7766HR37	Spring	1
13	7766HR13	Bearing	2	40	7766HR40	Bushing	1
14	7766HR14	End Plate	2	41	7766HR41	Clutch Housing	1
15	7766HR15	Rotor	1	42	7766HR42	Ball Retainer	1
16	7766HR16	Rotor Blades(5 per set)	1set	43	7766HR43	Spring	1
17	7766HR17	Pin	1	44	7766HR44	Washer	1
18	7766HR18	Cylinder	1	45	7766HR45	Pinion Gear	1
19	7766HR19	Spacer	1	46	7766HR46	Set Screw	1
20	7766HR20	Spring	1	47	7766HR47	O-Ring	1
21	7766HR21	Spring Guide	1	48	7766HR48	Exhaust Diffuser	1
22	7766HR22	Ring Gear	2	49	7766HR49	Screw	2
23	7766HR23	Planet Gear	6	50	7766HR50	Reduction Spindle	1
24	7766HR24	Pin	6	51	7766HR51	Center Gear	1

505 N. Railroad Ave. 33435
P.O. Box 1117 33425
Boynton Beach, Florida

SEE OUR CATALOG
at
www.taylorpneumatic.com

0116TPTC /all rights reserved /COPYRIGHT 2016 / final

Ph. (561) 732-1111
Fax (561) 731-4412
Toll Free 800-805-8665