

T-7764EX

1/4" Screwdriver

800 RPM



Optional

776337A
20-90
in.lbs.



TO ADJUST THE CLUTCH:
Simply turn #55 left or right
to tighten or loosen the
clutch spring for more or
less torque

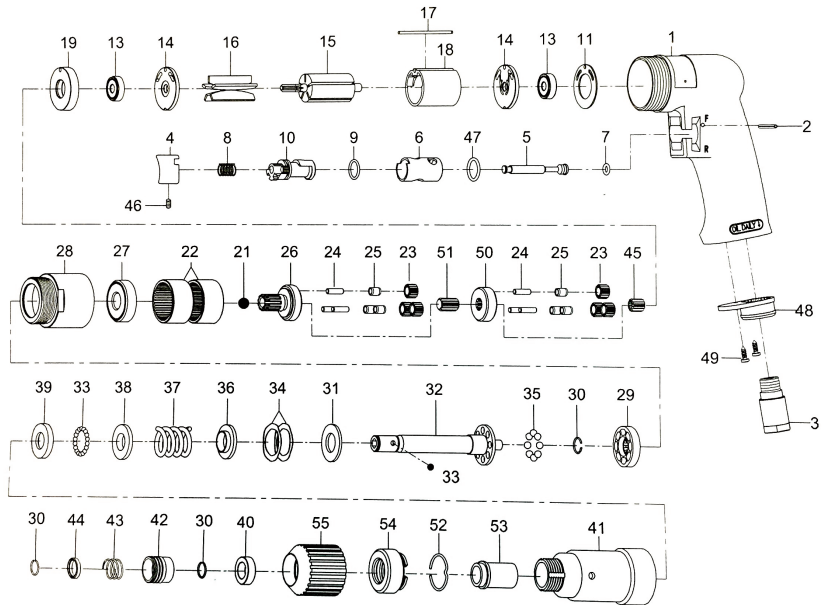
Standard

776337B
45-115
in.lbs.



Optional

776337C
45-145
in.lbs.



OILING INSTRUCTIONS:
OIL AFTER EACH USE WITH
1/2 TEASPOON OF AIRTOOL
OIL THROUGH THE AIR
INLET. RUN FOR ONE
SECOND TO COAT ALL
INTERNAL PARTS

USE 90 PSI MAXIMUM

Ref #	Part #	Description	Qty.	Ref #	Part #	Description	Qty.
1	776301	Housing	1	29	7763EX29	Drive Dog	1
1A	776301A	Complete Housing	1	30	776330	Retainer Ring	3
2	776302	Pin	1	31	7763EX31	Thrust Washer	1
3	776303	Air Inlet	1	32	7763EX32	Cam Spindle	1
4	776304	Trigger	1	33	776333	Ball	16
5	776305	Valve Stem	1	34	7763EX34	Wave Washer	2
6	776306	Reverse Bushing	1	35	7763EX35	Ball	8
7	776307	O-Ring	1	36	7763EX36	Washer	1
8	776308	Valve Spring	1	37	776337B	Spring (standard)	1
9	776309	O-Ring	1	38	7763EX38	Washer	1
10	776310	Reverse Lever	1	39	7763EX39	Ball Guide	1
11	776311	Motor Gasket	1	40	776340	Spacer	1
13	776313	Bearing	2	41	7764EX41	Clutch Housing	1
14	776314	End Plate	2	42	776342	Ball Retainer	1
15	776315	Rotor	1	43	776343	Spring	1
16	776316	Rotor Blade (5 per set)	1 set	44	7764EX44	Washer	1
17	776317	Pin	2	45	7764EX45	Pinion Gear	1
18	776318	Cylinder	1	46	776346	Set Screw	1
19	776319	Spacer	1	47	776347	O-Ring	1
21	7763EX21	Ball	1	48	776348	Exhaust Diffuser	1
22	776322	Internal Gear	2	49	776349	Screw	2
23	7764EX23	Planet Gear	6	50	7764EX50	Spindle	1
24	776324	Pin	6	51	7764EX51	Center Gear	1
25	7764EX25	Bushing	6	52	7763EX52	Retainer	1
26	7764EX26	Spindle	1	53	7763EX53	Bushing	1
27	7764EX27	Bearing	1	54	7763EX54	Adjustable Screw	1
28	7764EX28	Clamp Nut	1	55	7763EX55	Adjustable Knob	1

505 N. Railroad Ave. 33435
P.O. Box 1117 33425
Boynton Beach, Florida

SEE OUR CATALOG
at
www.taylorpneumatic.com

0116TPTC /all rights reserved /COPYRIGHT 2016 / final

Ph. (561) 732-1111
Fax (561) 731-4412
Toll Free 800-805-8665