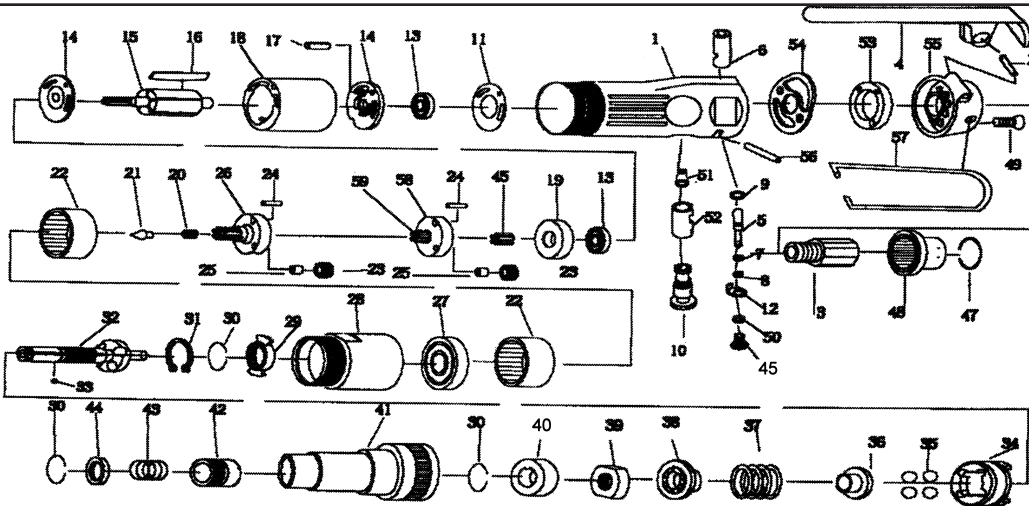


T-7763S 800 RPM Straight Air Screwdriver



TO ADJUST CLUTCH, first disconnect tool from air supply. **Caution-** do not allow #20 & #21 to fall out of drive spine or any dirt to enter assembly or housing.

Remove #41 (left hand thread). Remove #31 through #40 as a complete unit. Gently grasp drive dog ears on #34 in vice. Use 17mm open end wrench to adjust #39. Tightening will increase torque and loosening will decrease torque.

Re-install #41 using caution not to lose #20 and #21

OILING INSTRUCTIONS:
OIL AFTER EACH USE WITH 1/2 TEASPOON OF AIRTOOL OIL THROUGH THE AIR INLET. RUN FOR ONE SECOND TO COAT ALL INTERNAL PARTS

Optional
776337A
20-90
in.lbs.



Standard
776337B
45-115
in.lbs.



Optional
776337C
45-145
in.lbs.



USE 90 PSI MAXIMUM

Ref #	Part #	Description	Qty.	Ref #	Part #	Description	Qty.
1	7763S01	Motor Housing	1	32	776332	Cam Spindle	1
2	7763S02	Pin	1	33	776333	Steel Ball	1
3	7763S03	Air Inlet	1	34	776334	Clutch Carrier	1
4	7763S04	Throttle Lever	1	35	776335	Steel Ball	4
5	7763S05	Valve Stem	1	36	776336	Washer	1
6	7763S06	Valve	1	37	776337C	Spring (standard)	1
7	7763S07	O-Ring	1	38	776338	Washer	1
8	7763S08	Spring	1	39	776339	Adjust Nut	1
9	7763S09	O- Ring	1	40	776340	Spacer	1
10	7763S10	Reverse Lever	1	41	776341	Clutch Housing	1
11	776311	Motor Gasket	1	42	776342	Ball Retainer	1
12	7763S12	Reverse Retainer	1	43	776343	Spring	1
13	776313	Bearing	2	44	776344	Washer	1
14	776314	End Plate	2	45	7763S45	Pinion Gear	1
15	776315	Rotor	1	46	7763S46	Throttle Valve Plug	1
16	776316	Rotor Blade (5 per set)	1 set	47	7763S47	Retaining Ring	1
17	776317	Pin	2	48	7763S48	Exhaust Deflector	1
18	776318	Cylinder	1	49	7763S49	Screw	2
19	776319	Spacer	1	50	7763S50	O-Ring	1
20	776320	Spring	1	51	7763S51	Spring	1
21	776321	Spring Guide	1	52	7763S52	Reverse Bushing	1
22	776322	Internal Gear	2	53	7763S53	Muffler	1
23	7763S23	Planet Gear	6	54	7763S54	Rear Gasket	1
24	776324	Pin	6	55	7763S55	Rear Cover	1
25	7763S25	Bushing	6	56	7763S56	Pin	1
26	7763S26	Work Spindle	1	57	7763S57	Hook	1
27	7763S27	Bearing	1	58	7763S58	Reduction Spindle	1
28	7763S28	Clamp Nut	1	59	7763S59	Center Gear	1
29	776329	Drive Dog	1	60	776360	17mm Wrench(fits #39) (not shown)	1
30	776330	Retaining Ring	3				
31	776331	Retaining Ring	1				

505 N. Railroad Ave. 33435
P.O. Box 1117 33425
Boynton Beach, Florida

SEE OUR CATALOG
at
www.taylorpneumatic.com

12/15TPTC /all rights reserved /COPYRIGHT 2015 / final

Ph. (561) 732-1111
Fax (561) 731-4412
Toll Free 800-805-8665