

T-7763EX

1/4" Screwdriver

1800 RPM Externally Adjustable



Optional
776337A
20-90
in.lbs.



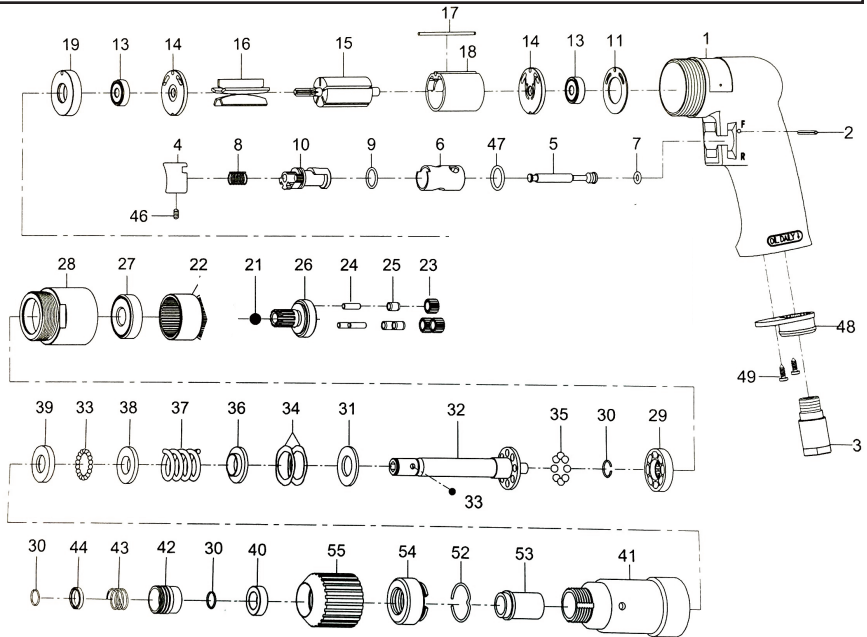
Standard
776337B
45-115
in.lbs.



Optional
776337C
45-145
in.lbs.



TO ADJUST CLUTCH;
Simply turn #55 left or
right to tighten or loosen
the clutch spring for more
or less torque



OILING INSTRUCTIONS:
OIL AFTER EACH USE WITH
1/2 TEASPOON OF AIRTOOL
OIL THROUGH THE AIR INLET.
RUN FOR ONE SECOND TO
COAT ALL INTERNAL PARTS

USE 90 PSI MAXIMUM

Ref #	Part #	Description	Qty.	Ref #	Part #	Description	Qty.
1	776301	Housing	1	28	776328	Clamp Nut	1
1A	776301A	Complete Housing	1	29	7763EX29	Drive Dog	1
2	776302	Pin	1	30	776330	Retainer Ring	3
3	776303	Air Inlet	1	31	7763EX31	Thrust Washer	1
4	776304	Trigger	1	32	7763EX32	Cam Spindle	1
5	776305	Valve Stem	1	33	776333	Ball	16
6	776306	Reverse Bushing	1	34	7763EX34	Wave Washer	2
7	776307	O- Ring	1	35	7763EX35	Ball	8
8	776308	Valve Spring	1	36	7763EX36	Washer	1
9	776309	O-Ring	1	37	776337B	Spring (included)	1
10	776310	Reverse Lever	1	38	7763EX38	Washer	1
11	776311	Motor Gasket	1	39	7763EX39	Ball Guide	1
13	776313	Bearing	2	40	776340	Spacer	1
14	776314	End Plate	2	41	7763EX41	Clutch Housing	1
15	776315	Rotor	1	42	776342	Ball Retainer	1
16	776316	Rotor Blades (5 per set)	1 set	43	776343	Spring	1
17	776317	Pin	2	44	776344	Washer	1
18	776318	Cylinder	1	46	776346	Set Screw	1
19	776319	Spacer	1	47	776347	O-Ring	1
21	7763EX21	Ball	1	48	776348	Exhaust Diffuser	1
22	776322	Internal Gear	1	49	776349	Screw	2
23	776323	Planet Gear	6	52	7763EX52	Retainer	1
24	776324	Pin	6	53	7763EX53	Bushing	1
25	776325	Spacer	3	54	7763EX54	Adjustable Screw	1
26	7763EX26	Spindle	1	55	7763EX55	Adjustable Knob	1
27	7763EX27	Bearing	1				

505 N. Railroad Ave. 33435
P.O. Box 1117 33425
Boynton Beach, Florida

SEE OUR CATALOG
at
www.taylorpneumatic.com

12/15TPTC /all rights reserved /COPYRIGHT 2015 / final

Ph. (561) 732-1111
Fax (561) 731-4412
Toll Free 800-805-8665