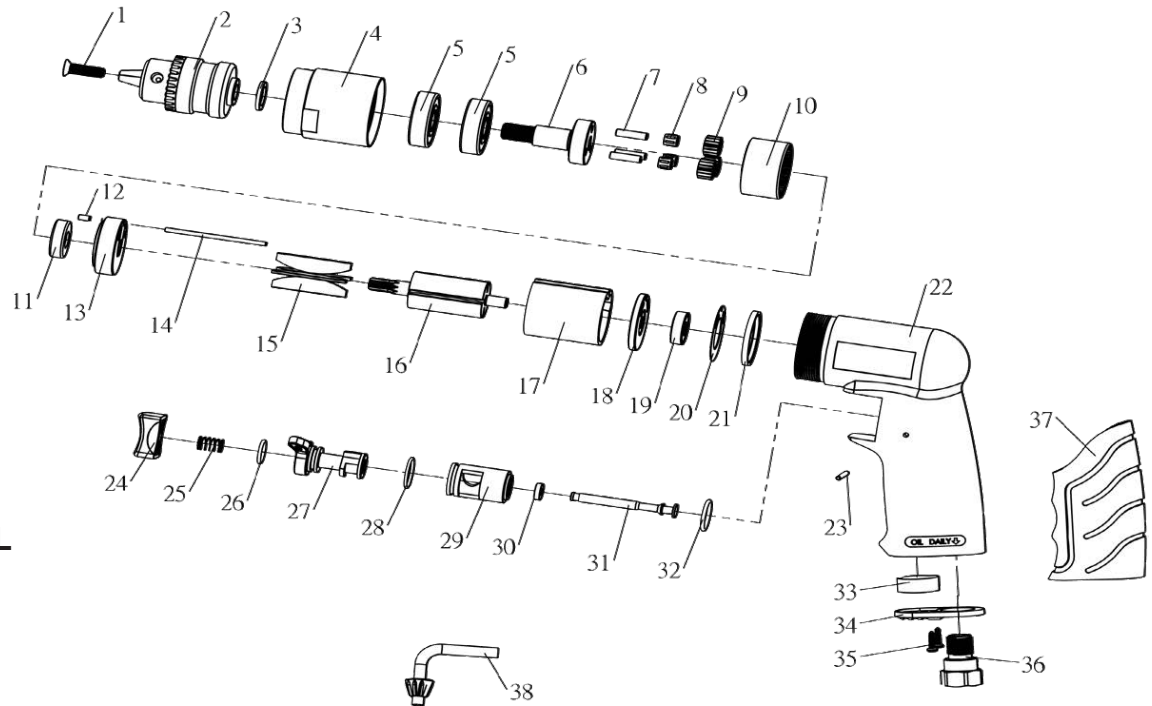


# T-7740R, T-7740RK

3/8" Reversible Drill, 4000 RPM, 0.5 HP



**OILING INSTRUCTIONS:**  
OIL AFTER EACH USE WITH A FEW DROPS OF AIRTOOL OIL THROUGH THE AIR INLET. RUN FOR 1 SECOND TO COAT ALL INTERNAL PARTS.



**USE 90 PSI MAXIMUM**

Ref #	Part #	Description	Qty.	Ref #	Part #	Description	Qty.
1	7740R01	Screw	1	20	7740R20	Cylinder Washer	1
2	7788-A	Drill Chuck	1	21	7740R21	Ring	1
3	7740R03	Chuck Spacer	1	22	7740R22	Housing	1
4	7740R04	Gear Housing	1	23	7740R23	Pin	1
5	7740R05	Bearing	2	24	7740R24	Trigger	1
6	7740R06	Planet Carrier	1	25	7740R25	Spring	1
7	7740R07	Pin	3	26	7740R26	O-Ring	1
8	7740R08	Needle Bearing	3	27	7740R27	Reverse Valve	1
9	7740R09	Pinion	3	28	7740R28	O-Ring	1
10	7740R10	Internal Gear	1	29	7740R29	Reverse Valve Bush	1
11	7740R11	Bearing	1	30	7740R30	Support Ring	1
12	7740R12	Pin	1	31	7740R31	Throttle Valve	1
13	7740R13	Front Plate	1	32	7740R32	O-Ring	1
14	7740R14	Pin	1	33	7740R33	Muffler	1
15	7740R15	Rotor Blade (set of 4)	1 set	34	7740R34	Exhaust Diffuser Taping	1
16	7740R16	Rotor	1	35	7740R35	Screw	2
17	7740R17	Cylinder	1	36	7740R36	Air Inlet	1
18	7740R18	End Plate	1	37	7740R37	Cover	1
19	7740R19	Bearing	1	38	T-7788-B	Key	1
					T-7788-KC	KeylessChuck (optional)	

505 N. Railroad Ave. 33435  
P.O. Box 1117 33425  
Boynton Beach, Florida

FOR WARRANTY INFORMATION &  
WARRANTY REGISTRATION VISIT  
[www.taylorpneumatic.com](http://www.taylorpneumatic.com)

Ph. (561) 732-1111  
Fax (561) 731-4412  
Toll Free 800-805-8665