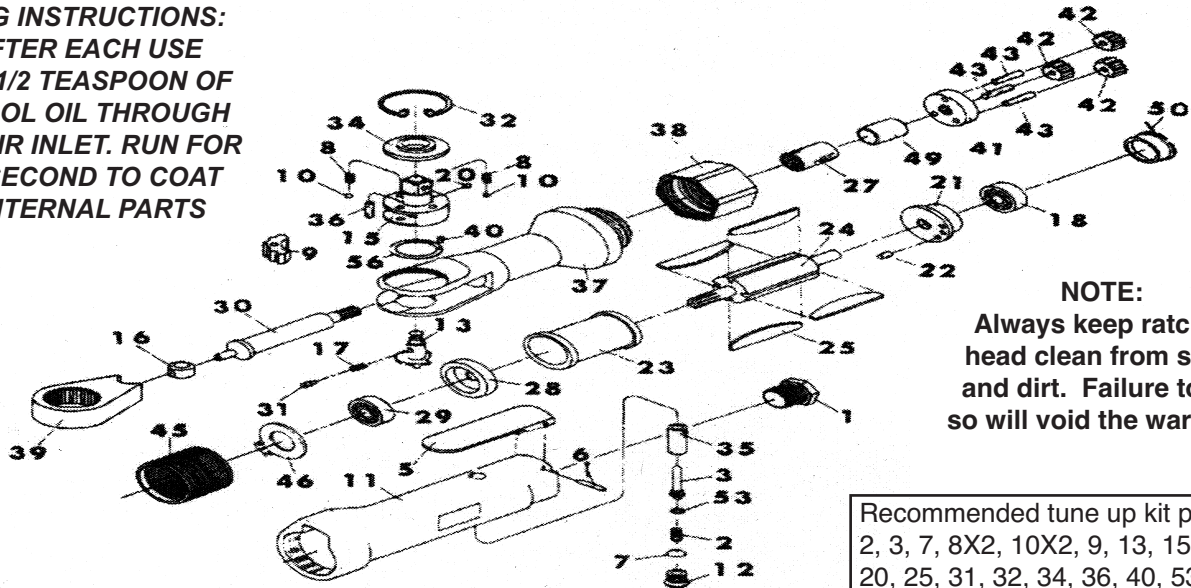


T-7728 3/8" Ratchet Wrench

T-7729 1/2" Ratchet Wrench



OILING INSTRUCTIONS:
OIL AFTER EACH USE
WITH 1/2 TEASPOON OF
AIRTOOL OIL THROUGH
THE AIR INLET. RUN FOR
ONE SECOND TO COAT
ALL INTERNAL PARTS



NOTE:
 Always keep ratchet head clean from sand and dirt. Failure to do so will void the warranty

Recommended tune up kit parts;
 2, 3, 7, 8X2, 10X2, 9, 13, 15, 16, 17,
 20, 25, 31, 32, 34, 36, 40, 53, 56

USE 90 PSI MAXIMUM

Ref #	Part #	Description	Qty.	Ref #	Part #	Description	Qty.
1	772801N	Air Inlet Bushing	1	27	772827N	Needle Bearing	1
2	772802N	Throttle Spring	1	28	772828N	Front End Plate	1
3	772803N	Valve Stem	1	29	772829N	Bearing	1
5	772805N	Throttle Lever	1	30	772830N	Crank Shaft	1
6	772806N	Spring Pin	1	31	772831N	Spring Cap	1
7	772807N	O-Ring	1	32	772832N	Internal Stop Ring	1
8	772808N	Friction Spring	2	34	772834N	Thrust Washer	1
9	772809N	Pawl	1	34	772934N	Thrust Washer	1
10	772810N	Ball	2	35	772835N	Throttle Valve	1
11	772811N	Throttle Handle	1	36	772836N	Needle Roller	1
12	772812N	Throttle Valve Plug	1	37	772837N	Ratchet Housing	1
13	772813N	Reverse Button	1	38	772838N	Clamp Nut	1
13	772913N	Reverse Button	1	39	772839N	Ratchet Yoke	1
15	772815N	3/8" Ratchet Anvil	1	40	772840N	Spring Pin	1
15	772915N	1/2" Ratchet Anvil	1	41	772841N	Idler Spindle	1
16	772816N	Drive Bushing	1	42	772842N	Idler Gear	3
17	772817N	Ratchet Spring	1	43	772843N	Pin	3
18	772818N	Bearing	1	45	772845N	Internal Gear	1
20	772820N	Ball	1	46	772846N	Exhaust Cover	1
20	772920N	Ball	1	49	772849N	Bushing	1
21	772821N	Rear End Plate	1	50	772850N	Bearing Cap	1
22	772822N	Spring Pin	1	53	772853N	O-Ring	1
23	772823N	Cylinder	1	56	772856N	Washer	1
24	772824N	Rotor	1		772899N	3/8" Drive Assembly	1
25	772825N	Rotor Blades (4 per set)	1set		772999N	1/2" Drive Assembly	1

505 N. Railroad Ave. 33435
 P.O. Box 1117 33425
 Boynton Beach, Florida

SEE OUR CATALOG
 at
www.taylorpneumatic.com

Ph. (561) 732-1111
 Fax (561) 731-4412
 Toll Free 800-805-8665