

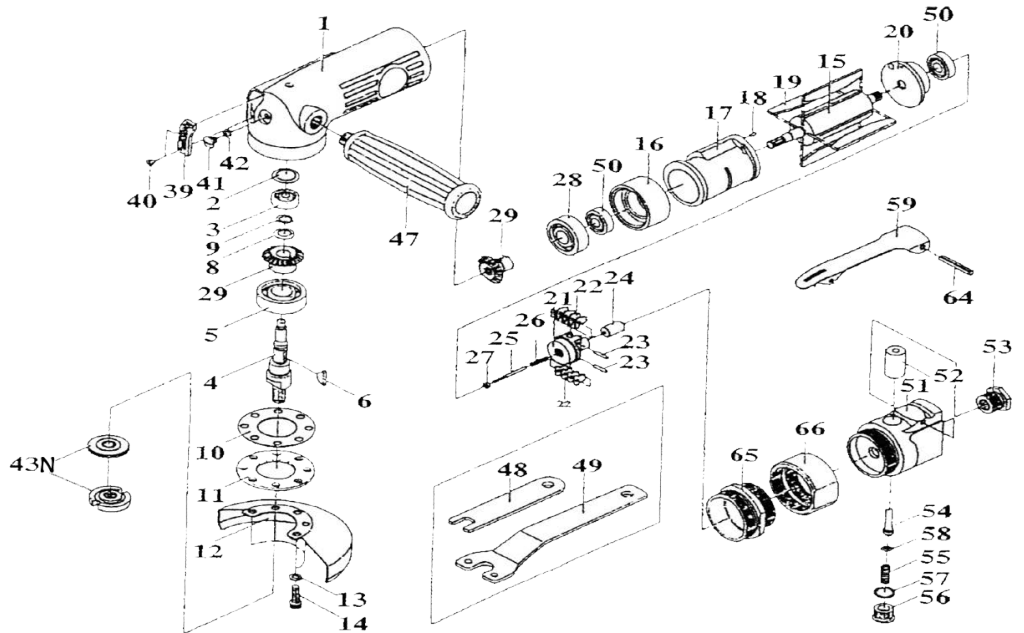
T-7715N 5" Angle Grinder

5/8-11 Spindle



OILING INSTRUCTIONS:
OIL AFTER EACH USE WITH A
COUPLE DROPS OF AIR TOOL
OIL THROUGH THE AIR INLET.
RUN FOR ONE SECOND
TO COAT ALL
INTERNAL PARTS

USE TYPE 27
WHEELS



USE 90 PSI MAXIMUM

Ref #	Part #	Description	Qty.	Ref #	Part #	Description	Qty.
1	771401N	Motor Housing	1	28	771428N	Bearing	1
2	771402N	Seal Plate	1	29	771429N	Gear Set	1set
3	771403N	Bearing	1	39	771439N	Exhaust Deflector	1
4	7715N04N	Spindle	1	40	771440N	Screw	2
5	771405N	Bearing	1	41	771441N	Plug	1
6	771406N	Woodruff Key	1	43N	7715N43N	Flange Nut Set (2)	1set
8	771408N	Wave Washer	1	47	771447N	Handle	1
9	771409N	Stop Ring	1	48	7715N48N	Wrench 10mm	1
10	771410N	Gasket	1	49	7715N49N	Spanner Wrench	1
11	7715N11N	Retainer	1	50	771450N	Bearing	1
12	771512N	5" Wheel Guard	1	51	771451N	Throttle Valve Housing	2
13	771413N	Spring Washer	4	52	771452N	Bushing	1
14	771414N	Pan Head Bolt	4	53	771453N	Air Inlet	1
15	771415N	Rotor	1	54	771454N	Valve Stem	1
16	771416N	Front End Plate	1	55	771455N	Valve Spring Throttle	1
17	771417N	Cylinder	1	56	771456N	Housing	1
18	771418N	Spring Pin	1	57	771457N	O- Ring	1
19	771419N	Rotor Blade(set of 4)	1set	58	771458N	O-Ring	1
20	771420N	Rear End Plate	1	59	771459AN	Lever Assembly	1
21	771421N	Governor	1	64	771464N	Spring Pin	1
22	771422N	Pendulum	8	65	771465N	Lock Ring	1
23	771423N	Spring Pin	2	66	771466N	Coupling Nut	1
24	771424N	Plunger	1				
25	771425N	Adjust Screw	1				
26	771426N	Spring	1				
27	771427N	Adjust Nut	1				

505 N. Railroad Ave. 33435
P.O. Box 1117 33425
Boynton Beach, Florida

FOR WARRANTY INFORMATION &
WARRANTY REGISTRATION VISIT
www.taylorpneumatic.com

0922TPTC /all rights reserved /COPYRIGHT 2022 / final

Ph. (561) 732-1111
Fax (561) 731-4412
Toll Free 800-805-8665

T-7715N 5" Angle Grinder

5/8-11 Spindle

How to install the grinding wheels on the T-7715N

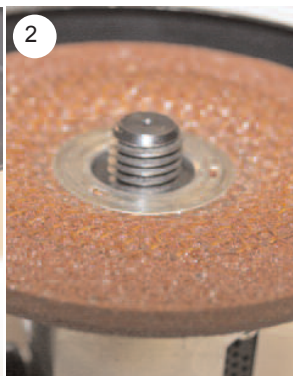


To use with a 4-1/2" wheel with a 7/8" Hole:

1. First, screw on the flange nut with the 7/8" diameter all the way to the shoulder on the spindle. Make sure the 7/8" diameter is facing out, towards the end of the spindle.

2. Next, place the wheel with the 7/8" diameter hole over the 7/8" diameter flange.

3. Screw on the next flange nut with the 1" diameter out and use the wrench to hold spindle in place and tighten flange nut with spanner wrench.



To use with a cutoff wheel (4-1/2" x .045 x 7/8")

Use rubber pad (provided) over top of flange nut with 7/8" flange.

Rubber pad fits between the wheel and the back flange nut. Then add wheel, then flange nut as shown in step 3 above.

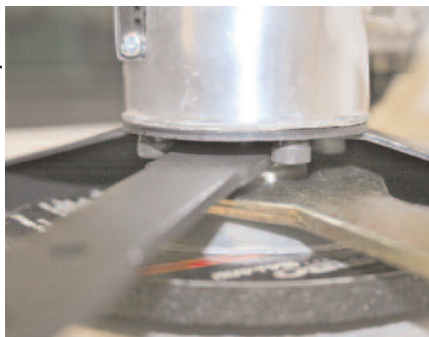


ALWAYS DISCONNECT FROM AIR SUPPLY BEFORE CHANGING WHEELS

To use with a 4-1/2" wheel that has a 5/8-11 threaded hub:

1. Remove all flange nuts.

2. Screw wheel onto 5/8" spindle using wrench provided to hold spindle. Use suitable flat wrench (not provided) to tighten wheel onto spindle.



To remove flange nut closest to tool, use wrench provided to hold spindle. With wheel removed, install flange nut with notches for spanner wrench. Use punch/pin (nail) through 1" flange into 7/8" flange. (use small holes in nuts, do not insert pin all the way) then use spanner to loosen and remove both flange nuts.



505 N Railroad Ave. 33435
P.O. Box 1117 33425
Boynton Beach, Florida

**FOR WARRANTY INFORMATION &
WARRANTY REGISTRATION VISIT
www.taylorpneumatic.com**

Ph. 561-732-1111
Fax 561-731-4412
Toll Free 800-805-8665