

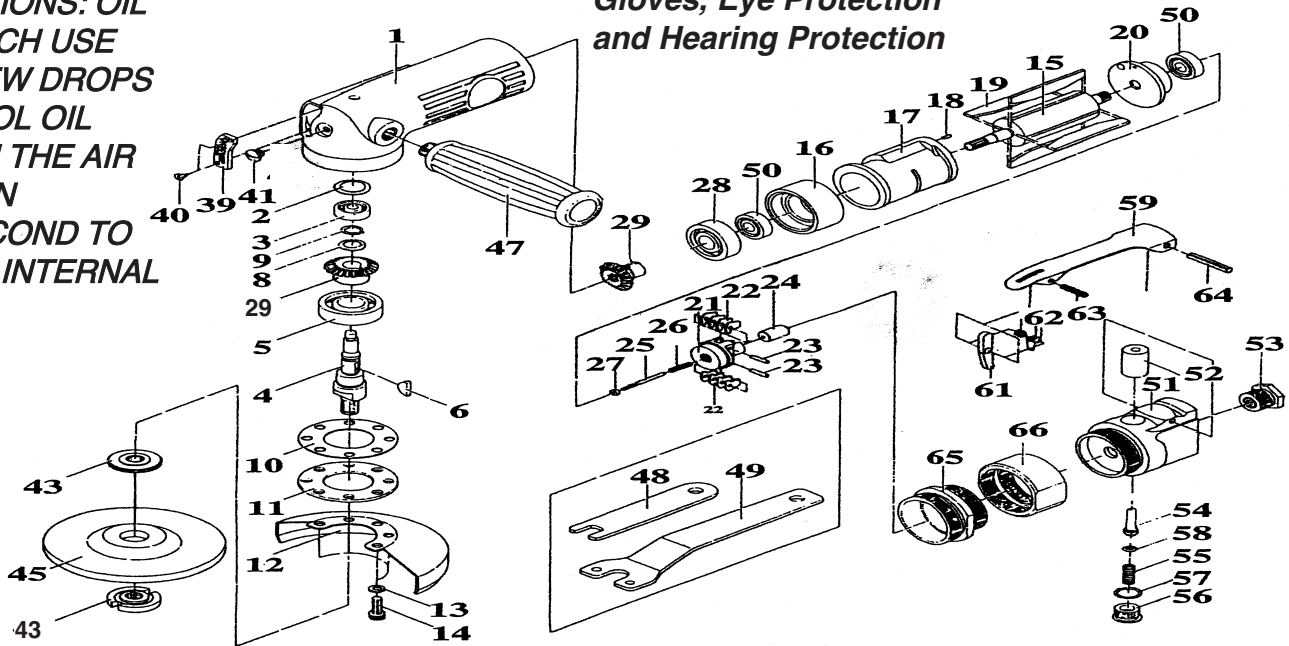
T-7714 4" Angle Grinder

T-7715 5" Angle Grinder



OILING
INSTRUCTIONS: OIL
AFTER EACH USE
WITH A FEW DROPS
OF AIRTOOL OIL
THROUGH THE AIR
INLET. RUN
FOR 1 SECOND TO
COAT ALL INTERNAL
PARTS

USE TYPE 27 WHEELS,
Gloves, Eye Protection
and Hearing Protection



USE 90 PSI MAXIMUM

Ref #	Part #	Description	Qty.	Ref #	Part #	Description	Qty.
1	771401N	Motor Housing	1	26	771426N	Spring	1
2	771402N	Seal Plate	1	27	771427N	Adjust Nut	1
3	771403N	Bearing	1	28	771428N	Bearing	1
4	771404N	Arbor	1	29	771429N	Bevel Gear & Pinion Gear	1 set
5	771405N	Bearing	1	39	771439N	Exhaust Deflector	1
6	771406N	Woodruff Key	1	40	771440N	Tapping Screw	2
8	771408N	Wave Washer	1	41	771441N	Plug	1
9	771409N	Stop Ring	1	43	771443N	Flange Nut	2
10	771410N	Gasket	1	47	771447N	Handle	1
11	771411N	Retainer	1	48	771448N	10mm Wrench	1
12(4")	771412N	4" Wheel Guard	1	49	771449N	Spanner Wrench	1
12(5")	771512N	5" Wheel Guard	1	50	771450N	Bearing	2
13	771413N	Spring Washer (includes #14)	5	51	771451N	Throttle Valve Housing	1
14	771414N	Hex Bolt(includes #13)	5	52	771452N	Bushing	1
15	771415N	Rotor	1	53	771453N	Air Inlet Bushing	1
16	771416N	Front End Plate	1	54	771454N	Valve Stem (includes #58)	1
17	771417N	Cylinder	1	55	771455N	Valve Spring	1
18	771418N	Spring Pin	1	56	771456N	Throttle Housing	1
19	771419N	Rotor Blade (set of 4)	1 set	57	771457N	O-Ring	1
20	771420N	Rear End Plate	1	58	771458N	O-Ring (includes #54)	1
21	771421N	Governor	1	59A	771459AN	Lever Assembly Complete	1
22	771422N	Pendulum	8	64	771464N	Spring Pin	1
23	771423N	Spring Pin	2	65	771465N	Lock Ring	1
24	771424N	Plunger	1	66	771466N	Coupling Nut	1
25	771425N	Adjust Screw	1				

505 N. Railroad Ave. 33435
P.O. Box 1117 33425
Boynton Beach, Florida

FOR WARRANTY INFORMATION &
WARRANTY REGISTRATION VISIT
www.taylorpneumatic.com

Ph. (561) 732-1111
Fax (561) 731-4412
Toll Free 800-805-8665

General instructions

Grinders T-7714, T-7715, T-7715N, T-8814EX, T-8815, T-8859G, T-9914, T-9915, T-9915N, T-9969G



OILING INSTRUCTIONS:
OIL AFTER EACH USE WITH 1/2 TEASPOON OF AIRTOOL OIL THROUGH THE AIR INLET. RUN FOR ONE SECOND TO COAT ALL INTERNAL PARTS.

TYPE 27 GRINDERS - GENERAL INSTRUCTIONS

1. ALWAYS DISCONNECT THE TOOL FROM AIR SOURCE WHEN CHANGING ACCESSORIES OR SERVICING THE TOOL.
2. USE SAFETY GLASSES, FULL FACE SHIELDS, HEARING PROTECTION AND GLOVES.
3. STAY IN CONTROL OF THE GRINDER - DO NOT OVER REACH.
4. ALWAYS REMOVE WRENCHES FROM THE TOOL AFTER SERVICING. WRENCHES LEFT ATTACHED MAY RESULT IN SERIOUS HARM TO THE OPERATOR.
5. VIBRATION MAY BE HARMFUL TO YOUR ARMS AND HANDS. WEAR PROTECTION.
6. INSPECT THE TOOL AND AIR SUPPLY ON A REGULAR BASIS.
7. DO NOT REMOVE GUARDS OR SAFETY DEVICES. DO NOT MODIFY OR DEFEAT SAFETY DEVICES.
8. DO NOT MAKE CONTACT WITH ELECTRICAL LINES.
9. LEAVE TRIGGER OFF BEFORE CONNECTING THE TOOL TO THE AIR SUPPLY. AVOID ACCIDENTAL STARTS.
10. WEAR THE PROPER CLOTHING. DO NOT WEAR JEWELRY, LOOSE CLOTHING, OR LONG HAIR AS IT CAN GET CAUGHT IN ROTATING PARTS. KEEP GLOVES AWAY FROM ROTATING PARTS.
11. DO NOT WORK IN HAZARDOUS ATMOSPHERES WHERE SPARKS COULD IGNITE OR DETONATE FUMES.
12. WATCH WHAT YOU ARE DOING. USE COMMON SENSE WHEN OPERATING PNEUMATIC TOOLS. DO NOT USE PNEUMATIC TOOLS WHEN TIRED OR UNDER THE INFLUENCE OF MEDICATION, ALCOHOL OR DRUGS. SERIOUS PERSONAL INJURY MAY RESULT FROM A MOMENTS INATTENTION.
13. USE 90 PSI AT THE TOOL. USE 3/8" HOSE OR LARGER WITH FITTINGS 9/32 MINIMUM I.D.
14. ONLY USE CLEAN DRY COMPRESSED AIR. NEVER USE OXYGEN, CARBON DIOXIDE, COMBUSTIBLE GASES OR ANY OTHER BOTTLED GAS TO POWER THIS TOOL.
15. SECURE YOUR WORK BEFORE STARTING - USE CLAMPS OR FIND A SUITABLE WAY TO MAINTAIN STABILITY.
16. STORE TOOLS IN A CLEAN DRY ENVIRONMENT.
17. DO NOT USE DAMAGED TOOLS - MARK, AND RETURN FOR SERVICE.
18. NEVER FORCE THE TOOL. LET THE TOOL DO THE WORK.

19. STOP USE IMMEDIATELY IF TOOL IS MAKING AN UNUSUAL NOISE OR VIBRATION. HAVE TOOL CHECKED BY PROFESSIONAL TECHNICIAN.
20. OPERATE AT RATED TOOL SPEED.
21. ALWAYS USE A GRINDING WHEEL WITH A MAXIMUM SPEED RATING EQUAL TO OR GREATER THAN THE LABELED SPEED OF THE TOOL.
22. USE ONLY REINFORCED TYPE 27 WHEELS 2", 4" or 4-1/2" IN DIAMETER, DEPENDING ON THE TOOL.
23. FOLLOW WHEEL MANUFACTURERS MOUNTING INSTRUCTIONS.
24. DO NOT OPERATE WITHOUT THE WHEEL GUARD IN PLACE.
25. WORK IN A WELL VENTILATED AREA AND USE APPROVED PERSONAL PROTECTIVE EQUIPMENT SUCH AS DUST MASKS, THAT ARE SPECIFICALLY DESIGNED TO FILTER OUT MICROSCOPIC PARTICLES. SOME DUST CREATED BY POWER SANDING, SAWING, GRINDING AND OTHER CONSTRUCTION ACTIVITIES CONTAIN CHEMICALS KNOWN TO CAUSE CANCER, BIRTH DEFECTS OR OTHER REPRODUCTIVE HARM. SOME EXAMPLES OF THESE CHEMICALS ARE: CRYSTALLINE SILICA FROM BRICKS, CEMENT AND OTHER MASONARY PRODUCTS, ARSENIC AND CHROMIUM FROM CHEMICALLY TREATED LUMBER AND LEAD FROM LEAD BASED PAINTS. YOUR RISK FROM EXPOSURE VARIES, DEPENDING ON HOW OFTEN YOU DO THIS TYPE OF WORK. TO REDUCE YOUR EXPOSURE TO THESE CHEMICALS WEAR PROTECTIVE MASKS AND CLOTHING.
26. KEEP CHILDREN, PETS AND BYSTANDERS AWAY WHILE OPERATING A PNEUMATIC TOOL. DISTRACTIONS CAN CAUSE YOU TO LOSE CONTROL. PROTECT OTHERS IN THE WORK AREA FROM DEBRIS SUCH AS METAL FILINGS AND SPARKS. PROVIDE BARRIERS OR SHIELDS AS NEEDED.
27. LUBRICATION - THIS TOOL REQUIRES A HIGH SPEED GREASE TO LUBRICATE THE PINION GEARS. ADD GREASE THROUGH THE GREASE FITTINGS AS NEEDED, APPROXIMATELY EVERY 8 HOURS.
28. THESE WARNINGS AND INSTRUCTIONS CAN NOT COVER ALL POSSIBLE CONDITIONS OR SITUATIONS. THE OPERATOR MUST UNDERSTAND THAT COMMON SENSE AND CAUTIONS ARE FACTORS WHICH CAN NOT BE BUILT INTO THE PRODUCT BUT MUST BE SUPPLIED BY THE OPERATOR.

505 N. Railroad Ave. 33435
P.O. Box 1117 33425
Boynton Beach, Florida

FOR WARRANTY INFORMATION &
WARRANTY REGISTRATION VISIT
www.taylorpneumatic.com

Ph. (561) 732-1111
Fax (561) 731-4412
Toll Free 800-805-8665