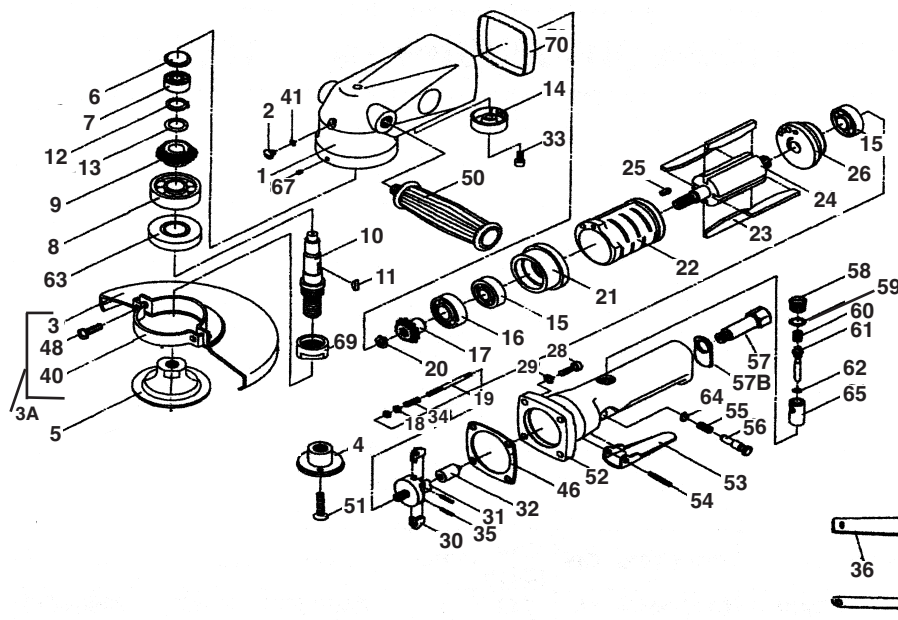


# T-7707

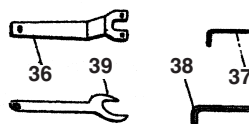
## 7" Angle Grinder



**USE TYPE 27 WHEELS,  
Gloves, Eye Protection  
and Hearing Protection**



**OILING INSTRUCTIONS:  
OIL AFTER EACH USE WITH  
1/2 TEASPOON OF AIRTOOL  
OIL THROUGH THE AIR  
INLET. RUN FOR ONE  
SECOND TO COAT ALL  
INTERNAL PARTS**



### USE 90 PSI MAXIMUM

Ref #	Part #	Description	Qty.	Ref #	Part #	Description	Qty.
1	770701	Motor Housing	1	32	770732	Plunger	1
2	770702	Plug	1	33	770733	Hex Bolt	1
3	770703	Wheel Guard	1	34	770734	Spring	1
3A	770703A	Guard Assembly (includes parts # 3, #40 & 2 x #48)	1	35	770735	Spring Pin	2
4	770704	Flange	1	36	770736	Spanner Wrench	1
5	770705	Flange Nut	1	37	770737	4mm Allen Wrench	1
6	770706	Seal Plate	1	38	770738	1/4" Allen Wrench	1
7	770707	Bearing	1	39	770739	24mm Wrench	1
8	770708	Bearing	1	40	770740	Guard Clamp Plate	1
9	770709	Bevel Gear	1	41	770741	O-Ring	1
10	770710	Arbor	1	46	770746	Gasket	1
11	770711	Key	1	48	770748	Screw	2
12	770712	Stop Ring	1	50	770750	Handle	1
13	770713	Washer	1	51	770751	Flange Stop Screw	1
14	770714	Exhaust Deflector	1	52	770752	Throttle Valve Housing	1
15	770715	Bearing	2	53	770753	Throttle Lever	1
16	770716	Bearing	1	54	770754	Spring Pin	1
17	770717	Bevel Pinion	1	55	770755	Spring	1
18	770718	Hex. Nut	2	56	770756	Lock Pin	1
19	770719	Adjust Screw	1	57	770757	Air Inlet	1
20	770720	Stop Ring	1	57B	770757B	Support Plate	1
21	770721	Front End Plate	1	58	770758	Throttle Housing Plug	1
22	770722	Cylinder	1	59	770759	O-Ring	1
23	770723	Rotor Blade (set of 4)	1 set	60	770760	Valve Spring	1
24	770724	Rotor	1	61	770761	Valve Stem	1
25	770725	Spring Pin	2	62	770762	O-Ring	1
26	770726	Rear End Plate	1	63	770763	Arbor Bearing Cap	1
28	770728	Hex Bolt	4	64	770764	E-Ring	1
29	770729	Spring Washer	4	65	770765	Bushing	1
30	770730	Pendulum	8	67	770767	Set Screw	1
31	770731	Governor	1	69	770769	Adjust Nut	1
				70	770770	Rubber Guard	1

505 N. Railroad Ave. 33435  
P.O. Box 1117 33425  
Boynton Beach, Florida

SEE OUR CATALOG  
at  
[www.taylorpneumatic.com](http://www.taylorpneumatic.com)

Ph. (561) 732-1111  
Fax (561) 731-4412  
Toll Free 800-805-8665

# General instructions

## Grinders T-7707, T-8707, T-9407, T-9409, T-9600, T-9600C, T-9707, T-9709



### **OILING INSTRUCTIONS:**

**OIL AFTER EACH USE WITH 2 OR 3 TABLESPOONS OF AIRTOOL OIL THROUGH THE AIR INLET. RUN FOR ONE SECOND TO COAT ALL INTERNAL PARTS.**

### **TYPE 27 GRINDERS - GENERAL INSTRUCTIONS**

1. ALWAYS DISCONNECT THE TOOL FROM AIR SOURCE WHEN CHANGING ACCESSORIES OR SERVICING THE TOOL.
2. USE SAFETY GLASSES, FULL FACE SHIELDS, HEARING PROTECTION AND GLOVES.
3. STAY IN CONTROL OF THE GRINDER - DO NOT OVER REACH.
4. ALWAYS REMOVE WRENCHES FROM THE TOOL AFTER SERVICING. WRENCHES LEFT ATTACHED MAY RESULT IN SERIOUS HARM TO THE OPERATOR.
5. VIBRATION MAY BE HARMFUL TO YOUR ARMS AND HANDS. WEAR PROTECTION.
6. INSPECT THE TOOL AND AIR SUPPLY ON A REGULAR BASIS.
7. DO NOT REMOVE GUARDS OR SAFETY DEVICES. DO NOT MODIFY OR DEFEAT SAFETY DEVICES.
8. DO NOT MAKE CONTACT WITH ELECTRICAL LINES.
9. LEAVE TRIGGER OFF BEFORE CONNECTING THE TOOL TO THE AIR SUPPLY. AVOID ACCIDENTAL STARTS.
10. WEAR THE PROPER CLOTHING. DO NOT WEAR JEWELRY, LOOSE CLOTHING, OR LONG HAIR AS IT CAN GET CAUGHT IN ROTATING PARTS. KEEP GLOVES AWAY FROM ROTATING PARTS.
11. DO NOT WORK IN HAZARDOUS ATMOSPHERES WHERE SPARKS COULD IGNITE OR DETONATE FUMES.
12. WATCH WHAT YOU ARE DOING. USE COMMON SENSE WHEN OPERATING PNEUMATIC TOOLS. DO NOT USE PNEUMATIC TOOLS WHEN TIRED OR UNDER THE INFLUENCE OF MEDICATION, ALCOHOL OR DRUGS. SERIOUS PERSONAL INJURY MAY RESULT FROM A MOMENTS INATTENTION.
13. USE 90 PSI AT THE TOOL. USE 3/8", 1/2" or 3/4" HOSE OR LARGER WITH FITTINGS 9/32 MINIMUM I.D. AS SPECIFIED
14. ONLY USE CLEAN DRY COMPRESSED AIR. NEVER USE OXYGEN, CARBON DIOXIDE, COMBUSTIBLE GASES OR ANY OTHER BOTTLED GAS TO POWER THIS TOOL.
15. SECURE YOUR WORK BEFORE STARTING - USE CLAMPS OR FIND A SUITABLE WAY TO MAINTAIN STABILITY.
16. STORE TOOLS IN A CLEAN DRY ENVIRONMENT.
17. DO NOT USE DAMAGED TOOLS - MARK, AND RETURN FOR SERVICE.
18. NEVER FORCE THE TOOL. LET THE TOOL DO THE WORK.

19. STOP USE IMMEDIATELY IF TOOL IS MAKING AN UNUSUAL NOISE OR VIBRATION. HAVE TOOL CHECKED BY PROFESSIONAL TECHNICIAN.
20. OPERATE AT RATED TOOL SPEED.
21. ALWAYS USE A GRINDING WHEEL WITH A MAXIMUM SPEED RATING EQUAL TO OR GREATER THAN THE LABELED SPEED OF THE TOOL.
22. USE ONLY REINFORCED TYPE 27 WHEELS, 7" OR 9" DEPENDING ON THE MODEL.
23. FOLLOW WHEEL MANUFACTURERS MOUNTING INSTRUCTIONS.
24. DO NOT OPERATE WITHOUT THE WHEEL GUARD IN PLACE.
25. WORK IN A WELL VENTILATED AREA AND USE APPROVED PERSONAL PROTECTIVE EQUIPMENT SUCH AS DUST MASKS, THAT ARE SPECIFICALLY DESIGNED TO FILTER OUT MICROSCOPIC PARTICLES. SOME DUST CREATED BY POWER SANDING, SAWING, GRINDING AND OTHER CONSTRUCTION ACTIVITIES CONTAIN CHEMICALS KNOWN TO CAUSE CANCER, BIRTH DEFECTS OR OTHER REPRODUCTIVE HARM. SOME EXAMPLES OF THESE CHEMICALS ARE: CRYSTALLINE SILICA FROM BRICKS, CEMENT AND OTHER MASONARY PRODUCTS, ARSENIC AND CHROMIUM FROM CHEMICALLY TREATED LUMBER AND LEAD FROM LEAD BASED PAINTS. YOUR RISK FROM EXPOSURE VARIES, DEPENDING ON HOW OFTEN YOU DO THIS TYPE OF WORK. TO REDUCE YOUR EXPOSURE TO THESE CHEMICALS WEAR PROTECTIVE MASKS AND CLOTHING.
26. KEEP CHILDREN, PETS AND BYSTANDERS AWAY WHILE OPERATING A PNEUMATIC TOOL. DISTRACTIONS CAN CAUSE YOU TO LOSE CONTROL. PROTECT OTHERS IN THE WORK AREA FROM DEBRIS SUCH AS METAL FILINGS AND SPARKS. PROVIDE BARRIERS OR SHIELDS AS NEEDED.
27. LUBRICATION - THIS TOOL REQUIRES A HIGH SPEED GREASE TO LUBRICATE THE PINION GEARS. ADD GREASE THROUGH THE GREASE FITTINGS AS NEEDED, APPROXIMATELY EVERY 8 HOURS.
28. THESE WARNINGS AND INSTRUCTIONS CAN NOT COVER ALL POSSIBLE CONDITIONS OR SITUATIONS. THE OPERATOR MUST UNDERSTAND THAT COMMON SENSE AND CAUTIONS ARE FACTORS WHICH CAN NOT BE BUILT INTO THE PRODUCT BUT MUST BE SUPPLIED BY THE OPERATOR.

505 N. Railroad Ave. 33435  
P.O. Box 1117 33425  
Boynton Beach, Florida

SEE OUR CATALOG  
at  
[www.taylorpneumatic.com](http://www.taylorpneumatic.com)

Ph. (561) 732-1111  
Fax (561) 731-4412  
Toll Free 800-805-8665