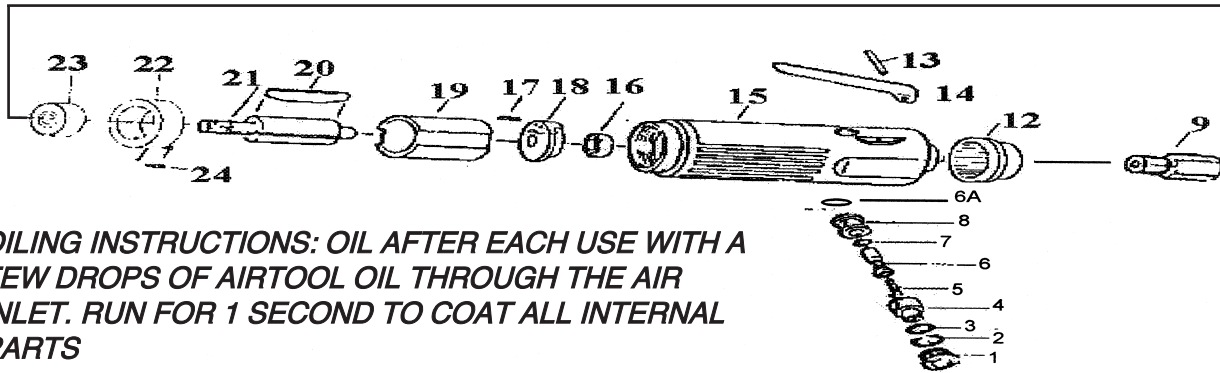
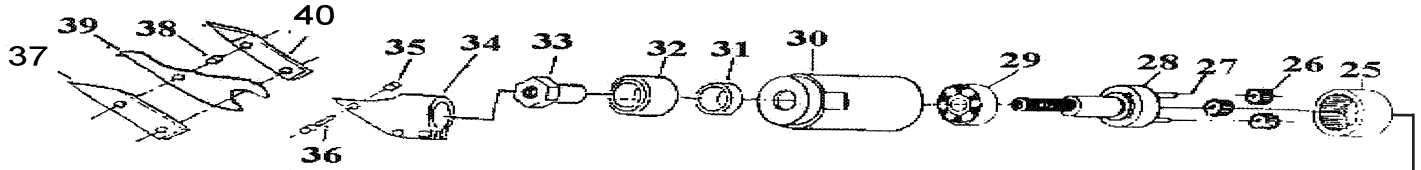


T-7701 Heavy Duty Metal Shear



OILING INSTRUCTIONS: OIL AFTER EACH USE WITH A FEW DROPS OF AIRTOOL OIL THROUGH THE AIR INLET. RUN FOR 1 SECOND TO COAT ALL INTERNAL PARTS

USE 90 PSI MAXIMUM

Ref #	Part #	Description	Qty.	Ref #	Part #	Description	Qty.
1	770101	Valve Screw	1	22	770122	Front Plate	1
2	770102	O-Ring	1	23	770123	Bearing	1
3	770103	O-Ring	1	24	770124	Spring Pin	1
4	770104	Air Regulator	1	25	770125	Internal Gear	2
5	770105	Valve Spring	1	26	770126	Planet Gear	3
6	770106	Valve Stem	1	27	770127	Planet Pin	3
6A	770106A	O-Ring	1	28	770128	Planet Carrier	1
7	770107	O-Ring	1	29	770129	Bearing	2
8	770108	Valve Bushing	1	30	770130	Gear Housing	1
9	770109	Inlet Bushing	1	31	770131	Spacer	1
12	770112	Exhaust Deflector	1	32	770132	Bearing	1
13	770113	Spring Pin	1	33	770133	Eccentric Nut	1
14	770114	Throttle Lever	1	34	770134	Cutter-Housing	1
15	770115	Motor Housing	1	35	770135	Lock Nut	3
16	770116	Bearing	1	36	770136	Lock Screw	3
17	770117	Spring Pin	1	37	770137	Left Blade	1
18	770118	Rear End Plate	1	38	770138	Spacer	2
19	770119	Cylinder	1	39	770139	Center Blade	1
20	770120	Rotor Blade (4 per set)	1 set	40	770140	Right Blade	1
21	770121	Rotor	1				

505 N. Railroad Ave. 33435
P.O. Box 1117 33425
Boynton Beach, Florida

FOR WARRANTY INFORMATION &
WARRANTY REGISTRATION VISIT
www.taylorpneumatic.com

Ph. (561) 732-1111
Fax (561) 731-4412
Toll Free 800-805-8665