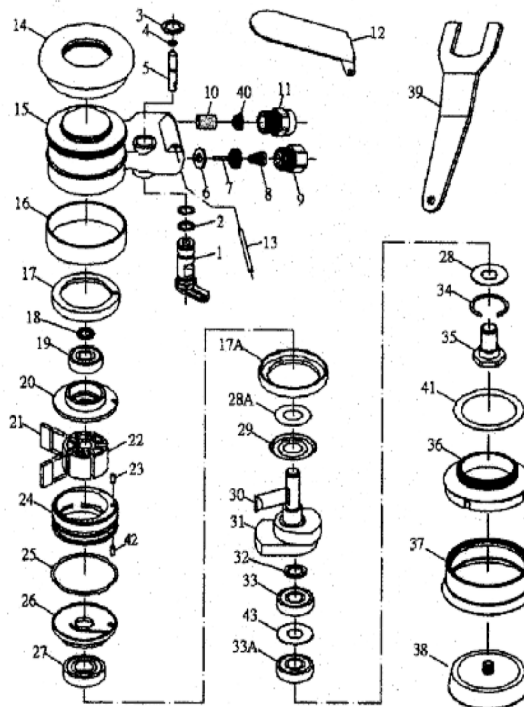


T-7553

3" PALM GRIP SANDER



OILING INSTRUCTIONS:
OIL AFTER EACH USE
WITH A FEW DROPS OF
AIRTOOL OIL THROUGH
THE AIR INLET. RUN FOR
1 SECOND TO COAT ALL
INTERNAL PARTS



USE 90 PSI MAXIMUM

REF #	PART #	DESCRIPTION	QTY	REF #	PART #	DESCRIPTION	QTY
1	755301	REGULATOR	1	24	755324	CYLINDER	1
2	755302	O-RING	2	25	755325	O-RING	1
3	755303	SNAP RING	1	26	755326	FRONT END PLATE	1
4	755304	O-RING	1	27	755327	BEARING	1
5	755305	VALVE STEM	1	28	755328	WASHER	1
6	755306	WASHER	1	28A	755328A	WASHER	1
7	755307	VALVE	1	29	755329	WASHER	1
8	755308	SPRING	1	30	755330	ROTOR KEY	1
9	755309	AIR INLET	1	31	755331	BALANCER	1
10	755310	SILENCER	1	32	755332	SNAP RING	1
11	755311	EXHAUST SLEEVE	1	33	755333	BEARING	1
12	755312	LEVER	1	33A	755333A	BEARING	1
13	755313	PIN	1	34	755334	SNAP RING	1
14	755314	RUBBER GRIP	1	35	755335	SHAFT	1
15	755315	HOUSING	1	36	755336	HOUSING COVER	1
16	755316	SKIRT	1	37	755337	SHROUD	1
17	755317	RUBBER BUSHING	1	38	755338	3" PSA PAD (OPTIONAL)	1
17A	755317A	RUBBER BUSHING	1	38	755338V	3" VELCRO PAD	1
18	755318	SNAP RING	1	39	755339	SPANNER WRENCH	1
19	755319	BEARING	1	40	755340	FILTER	1
20	755320	REAR END PLATE	1	41	755341	WASHER	1
21	755321	ROTOR BLADE (5 PER SET)	1set	42	755342	PIN	1
22	755322	ROTOR	1	43	755343	SHIM	1
23	755323	PIN	1	44	755344	3-1/2" POLISHING PAD (OPTIONAL)	1

505 N. Railroad Ave. 33435
P.O. Box 1117 33425
Boynton Beach, FL

SEE MORE OF OUR CATALOG AT
www.taylorpneumatic.com
DECEMBER 2020 / ALL RIGHTS RESERVED / COPYRIGHT 2020

Ph. (561)732-1111
Fax. (561)731-4412
Toll Free (800) 805-8665