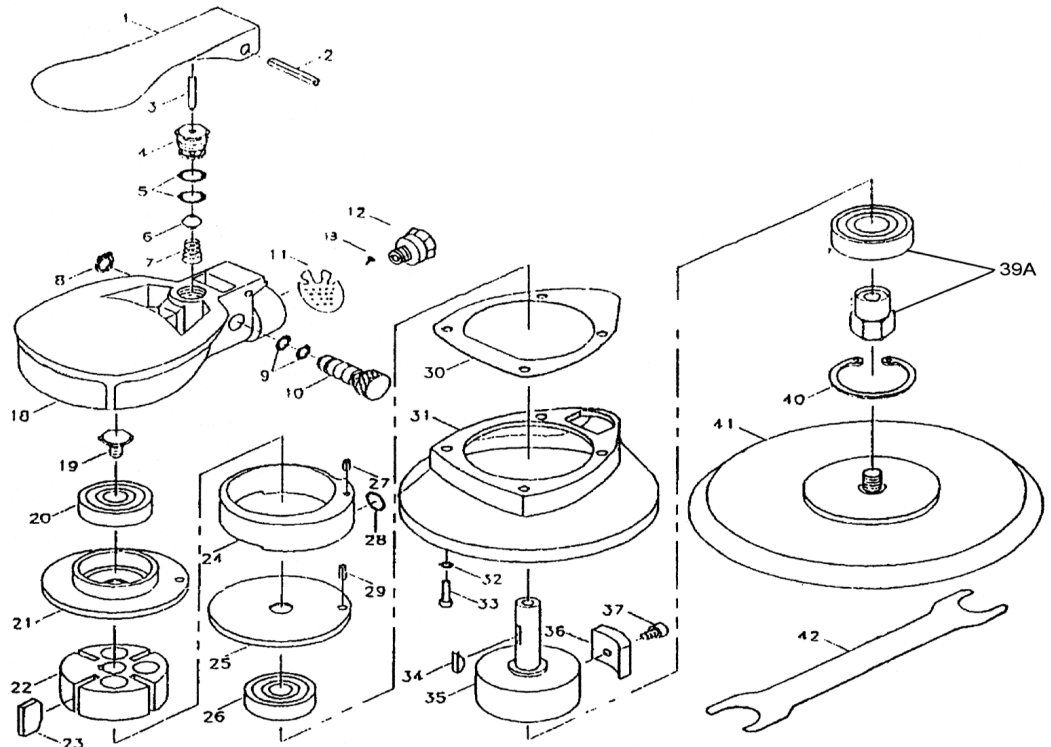


**T-7445,6 5",6" PALM GRIP DA SANDER**

**T-7445SL,6SL 5",6" PALM GRIP DA W/ SAFETY LEVER**



**OILING INSTRUCTIONS:  
OIL AFTER EACH USE  
WITH A FEW DROPS OF  
AIRTOOL OIL THROUGH  
THE AIR INLET. RUN FOR  
1 SECOND TO COAT ALL  
INTERNAL PARTS.**



**USE 90 PSI MAXIMUM**

REF #	PART #	DESCRIPTION	QTY	REF #	PART #	DESCRIPTION	QTY
1	744601N	THROTTLE LEVER	1	23A	744623A	SPRING (SET OF 4)	1set
	744601SL	SAFETY THROTTLE LEVER (NOT SHOWN)	1	24	744624N	CYLINDER	1
2	744602N	LEVER PIN	1	25	744625N	REAR PLATE	1
3	744603N	VALVE PIN	1	26	744626N	BEARING	1
4	744604N	VALVE BODY	1	27	744627N	CYLINDER PIN	1
5	744605N	O-RING	2	28	744628N	O-RING	1
6	744606N	THROTTLE VALVE	1	29	744629N	CYLINDER PIN	1
7	744607N	VALVE SPRING	1	30	744630N	MOTOR GASKET	1
8	744608N	RETAINING RING	1	31	744631N	PAD COVER	1
9	744609N	O-RING	2	32	744632N	WASHER	4
10	744610N	REGULATOR	1	33	744633N	CAP SCREW	4
11	744611N	DEFLECTOR	1	34	744634N	KEY	1
12	744612N	AIR INLET	1	35	744635N	CRANK SHAFT	1
13	744613N	DEFLECTOR SCREW	2	36	744636N	LOWER WEIGHT	1
18	744618N	MOTOR HOUSING	1	37	744637N	CAP SCREW	1
19	744619N	SCREW	1	39A	744639A	RANDOM SHAFT (INCLUDES BEARING)	1
20	744620N	BEARING	1	40	744640N	RETAINING RING	1
21	744621N	FRONT PLATE	1	41	T-7416	6" PSA PAD	1
22	744622N	ROTOR	1		T-7415	5" PSA PAD	1
23	744623N	ROTOR BLADES (SET OF 4)	1set	42	744642N	WRENCH	1

505 N. Railroad Ave. 33435  
P.O. Box 1117 33425  
Boynton Beach, FL

SEE MORE OF OUR CATALOG AT  
[www.taylorpneumatic.com](http://www.taylorpneumatic.com)

OCTOBER 2020 / ALL RIGHTS RESERVED / COPYRIGHT 2020

Ph. (561)732-1111  
Fax. (561)731-4412  
Toll Free (800) 805-8665