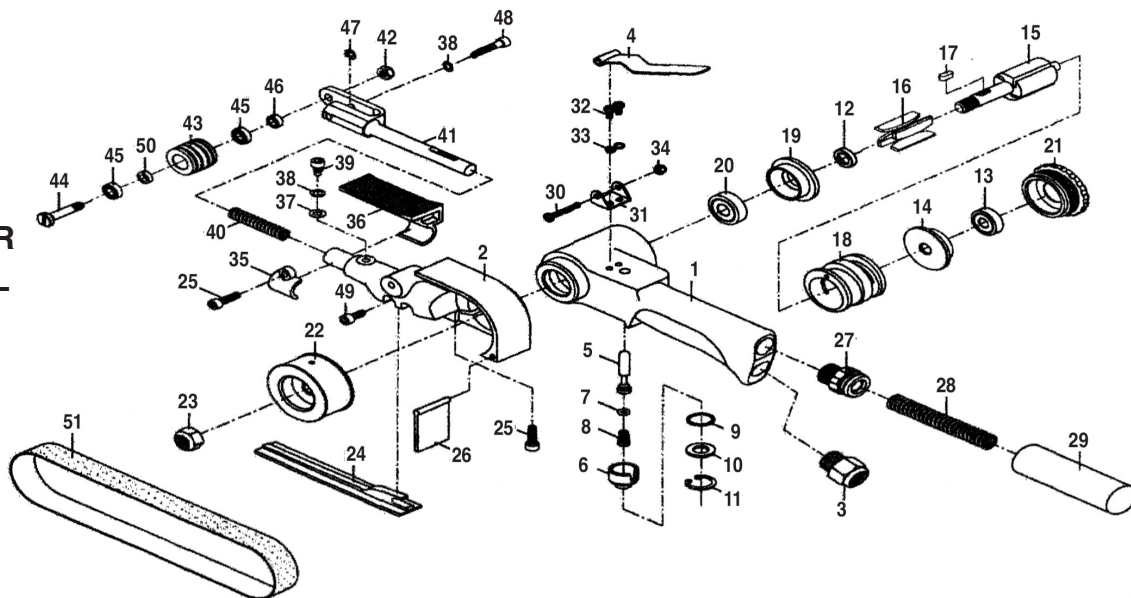


# T-7020 BELT SANDER

## 3/4" X 20 1/2" 16,000 RPM



**OILING INSTRUCTIONS:**  
**OIL AFTER EACH USE**  
**WITH A FEW DROPS OF**  
**AIRTOOL OIL THROUGH**  
**THE AIR INLET. RUN FOR**  
**1 SECOND TO COAT ALL**  
**INTERNAL PARTS**



### USE 90 PSI MAXIMUM

REF #	PART #	DESCRIPTION	QTY	REF #	PART #	DESCRIPTION	QTY
1	702001	HOUSING	1	29	702029	SILENCER	1
2	702002	GUARD BODY	1	30	702030	SCREW	1
3	702003	AIR INLET	1	31	702031	LEVER SUPPORT	1
4	702004	LEVER	1	32	702032	SCREW	2
5	702005	VALVE STEM	1	33	702033	SPRING WASHER	2
6	702006	REGULATOR	1	34	702034	HEX NUT	1
7	702007	O-RING	1	35	702035	CLAMP	1
8	702008	SPRING	1	36	702036	FINGER PAD	1
9	702009	O-RING	1	37	702037	WASHER	1
10	702010	SPACER	1	38	702038	SPRING WASHER	2
11	702011	RETAINING RING	1	39	702039	SCREW	1
12	702012	DISTANCE COLLAR	1	40	702040	SPRING	1
13	702013	BEARING	1	41	702041	ARM	1
14	702014	REAR END PLATE	1	42	702042	NUT	1
15	702015N	ROTOR	1	43	702043	IDLER PULLEY	1
16	702016N	BLADE (4)	1set	44	702044	SHAFT	1
17	702017	KEY	1	45	702045	BEARING	2
18	702018	CYLINDER	1	46	702046	SPACER (LONG)	1
19	702019	FRONT END PLATE	1	47	702047	RETAINING RING	1
20	702020	BEARING	1	48	702048	BOLT	1
21	702021	CAP	1	49	702049	BOLT	1
22	702022	DRIVE PULLEY	1	50	702050	SPACER (SHORT)	1
23	702023	HEX NUT	1	51	T-7020100	100 GRIT BELT	1
24	702024	FLAT SHOW	1		T-7020120	120 GRIT BELT	1
25	702025	HEX SOCKET HEAD BOLT	2	52	702052	4MM WRENCH (NOT SHOWN)	1
26	702026	DUST COVER	1				
27	702027	NIPPLE	1				
28	702028	SPRING	1				

505 N. Railroad Ave. 33435  
P.O. Box 1117 33425  
Boynton Beach, FL

FOR WARRANTY INFORMATION &  
WARRANTY REGISTRATION VISIT

[www.taylorpneumatic.com](http://www.taylorpneumatic.com)

Ph. (561)732-1111  
Fax. (561)731-4412  
Toll Free (800) 805-8665