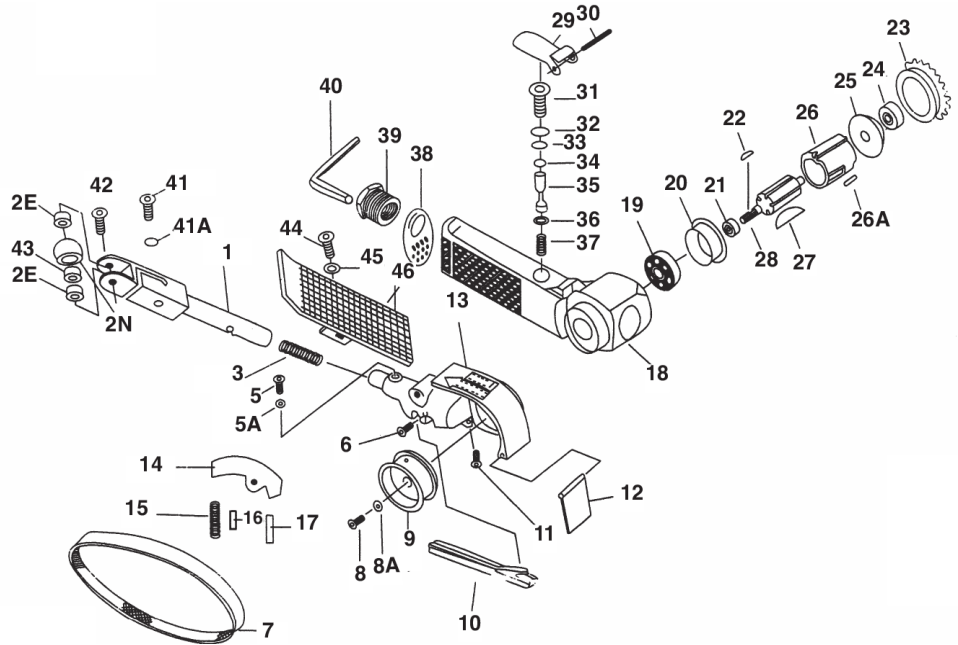


# T-7020A BELT SANDER

## 3/4" X 20 1/2" 16,000 RPM



**OILING INSTRUCTIONS:**  
**OIL AFTER EACH USE**  
**WITH A FEW DROPS OF**  
**AIRTOOL OIL THROUGH**  
**THE AIR INLET. RUN FOR**  
**1 SECOND TO COAT ALL**  
**INTERNAL PARTS**



**USE 90 PSI MAXIMUM**

REF #	PART #	DESCRIPTION	QTY	REF #	PART #	DESCRIPTION	QTY
1	7020A01A	IDLER PULLEY BRACKET	1	21	7020A21	SPACER	1
2	7020A02	IDLER PULLEY ASSEMBLY (INCLUDES 2-#2E'S, 1-#43, 1-#02N)	1set	22	7020A22	KEY	1
2E	7020A02E	BEARING	2	23	7020A23	CAP	1
2N	7020A02N	IDLER PULLEY (NO BEARING OR SPACER)	1	24	7020A24	BEARING	1
3	7020A03	SPRING	1	25	7020A25	END PLATE	1
5	7020A05	BOLT	1	26	7020A26	CYLINDER	1
5A	7020A05A	WASHER	1	26A	7020A26A	PIN	1
6	7020A06	BOLT	1	27	7020A27	ROTOR BLADES (SET OF 5)	1set
7	T-702080	80 GRIT BELT	1	28	7020A28	ROTOR	1
	T-7020100	100 GRIT BELT	1	29	7020A29	THROTTLE LEVER	1
8	7020A08	BOLT	1	30	7020A30	LEVER PIN	1
8A	7020A08A	WASHER	1	31	7020A31	VALVE BODY	1
9	7020A09	DRIVE PULLEY	1	32	7020A32	O-RING	1
10	7020A10	SHOE	1	33	7020A33	O-RING	1
11	7020A11	BOLT	1	34	7020A34	O-RING	1
12	7020A12	DUST FLAP	1	35	7020A35	VALVE STEM	1
13	7020A13	GUARD BODY	1	36	7020A36	O-RING	1
14	7020A14	TENSION BAR	1	37	7020A37	VALVE SPRING	1
15	7020A15	SPRING	1	38	7020A38	DEFLECTOR	1
16	7020A16	LEVER PIN	1	39	7020A39	AIR INLET	1
17	7020A17	LEVER PIN	1	40	7020A40	WRENCH	1
18	7020A18	HOUSING	1	41	7020A41	SCREW	1
19	7020A19	BEARING	1	41A	7020A41A	C-CLIP	1
20	7020A20	END PLATE	1	42	7020A42	IDLER PULLEY SCREW	1
				43	7020A43	SPACER	1
				44	7020A44	SCREW	1
				45	7020A45	SPRING WASHER	1
				46	7020A46	FINGER PAD	1

505 N. Railroad Ave. 33435  
P.O. Box 1117 33425  
Boynton Beach, FL

FOR WARRANTY INFORMATION &  
WARRANTY REGISTRATION VISIT

[www.taylorpneumatic.com](http://www.taylorpneumatic.com)

Ph. (561)732-1111  
Fax. (561)731-4412  
Toll Free (800) 805-8665