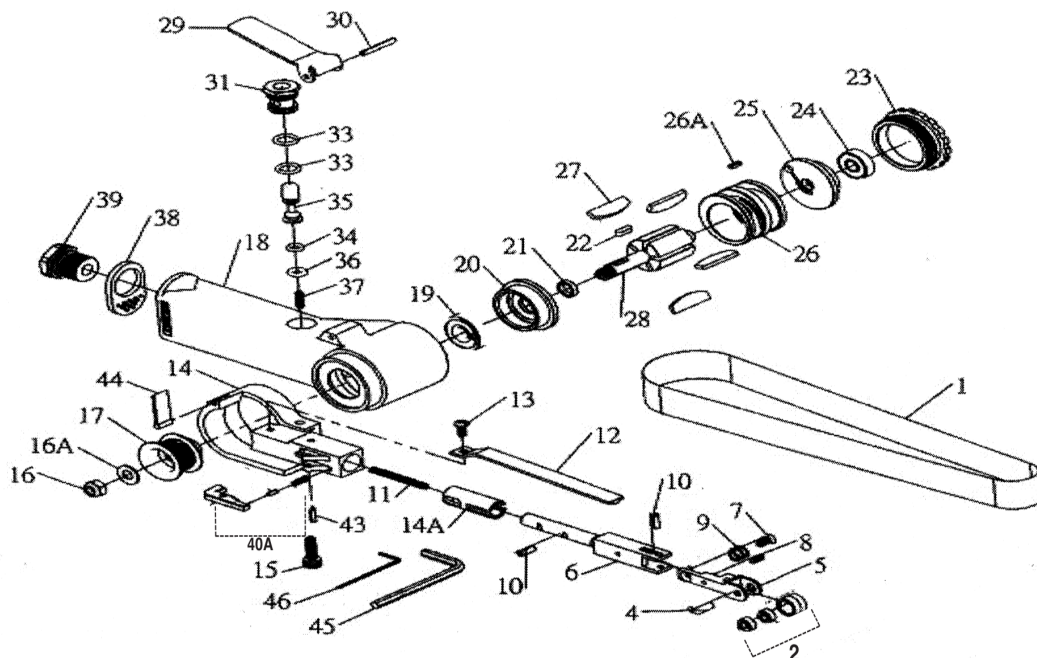


T-7010AN BELT SANDER

3/8"X13" 16,000 RPM



OILING INSTRUCTIONS:
OIL AFTER EACH USE
WITH A FEW DROPS OF
AIRTOOL OIL THROUGH
THE AIR INLET. RUN FOR
1 SECOND TO COAT ALL
INTERNAL PARTS



USE 90 PSI MAXIMUM

REF #	PART #	DESCRIPTION	QTY	REF #	PART #	DESCRIPTION	QTY
1	T-7010100	100 GRIT BELT	1	21	7010A21	SPACER	1
	T-7010120	120 GRIT BELT	1	22	7010A22	KEY	1
2	7010A02	PULLEY ASSEMBLY (PULLEY W/ 2 BEARINGS)	1set	23	7010A23	CAP	1
4	7010AN04	IDLER PULLEY SHAFT	1	24	7010A24	BEARING	1
5	7010AN05	BRACKET	1	25	7010A25	END PLATE	1
6	7010A06	TENSION BAR	1	26	7010A26	CYLINDER	1
7	7010A07	HEX SCREW	1	26A	7010A26A	PIN	1
8	7010A08	FLAT HEAD SCREW	1	27	7010A27	ROTOR BLADE (SET OF 4)	1set
9	7010A09	SPRING	1	28	7010A28	ROTOR	1
10	7010A10	SPRING PIN	1	29	7010A29	THROTTLE LEVER	1
11	7010A11	SPRING	1	30	7010A30	LEVER PIN	1
12	7010A12	SHOW	2	31	7010A31	VALVE BODY	1
13	7010A13	SCREW	1	33	7010A33	O-RING	2
14	7010A14	GUARD SUB ASSEMBLY	1	34	7010A34	O-RING	1
14A	7010A14A	BUSHING	1	35	7010A35	VALVE STEM	1
15	7010A15	BOLT	1	36	7010A36	O-RING	1
16	7010A16	NUT	1	37	7010A37	VALVE SPRING	1
16A	7010A16A	WASHER	1	38	7010A38	EXHAUST DEFLECTOR	1
17	7010A17	DRIVE PULLEY	1	39	7010A39	AIR INLET	1
18	7010A18	HOUSING	1	40A	7010A40A	TENSION LATCH ASSEMBLY	1
19	7010A19	BEARING	1	43	7010A43	LEVER PIN	1
20	7010A20	END PLATE	1	44	7010A44	SPARK GUARD	1
			1	45	7010A45	4MM ALLEN WRENCH	1
			1	46	7010A46	1.5MM ALLEN WRENCH	1

505 N. Railroad Ave. 33435
P.O. Box 1117 33425
Boynton Beach, FL

FOR WARRANTY INFORMATION &
WARRANTY REGISTRATION VISIT

www.taylorpneumatic.com

Ph. (561)732-1111
Fax. (561)731-4412
Toll Free (800) 805-8665