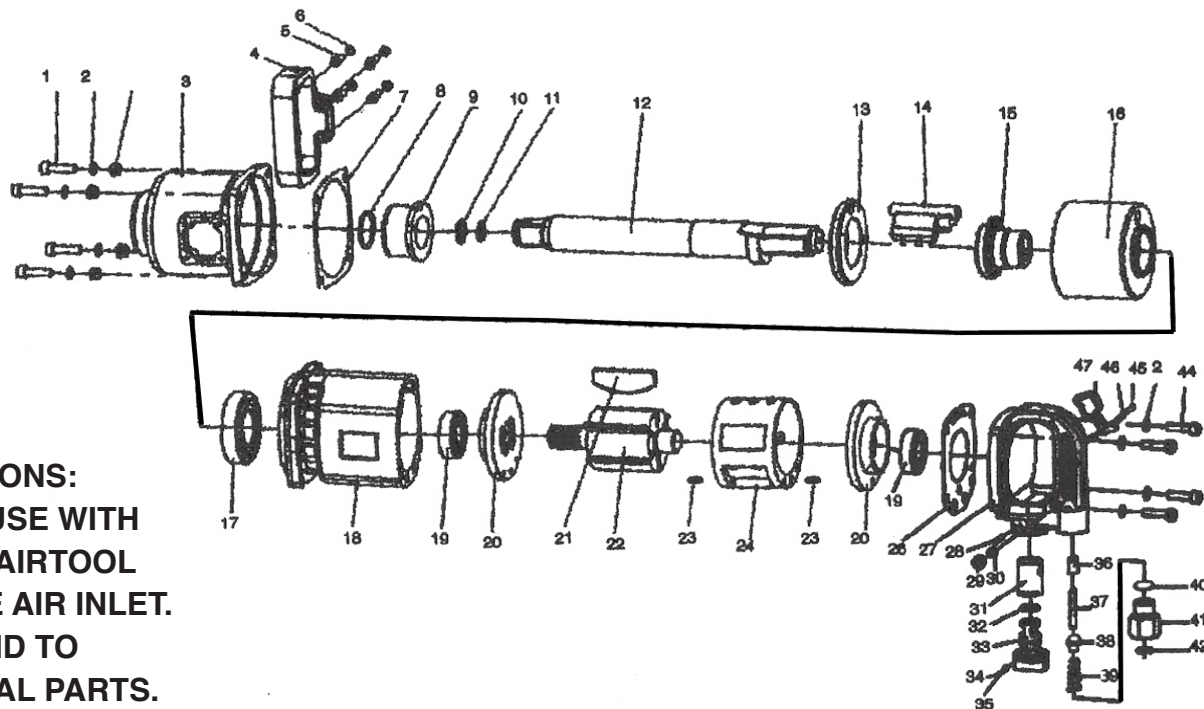


T-6799L & T-6799L-6

1" SUPER DUTY IMPACT WRENCH



OILING INSTRUCTIONS:
OIL AFTER EACH USE WITH
A FEW DROPS OF AIRTOOL
OIL THROUGH THE AIR INLET.
RUN FOR 1 SECOND TO
COAT ALL INTERNAL PARTS.

USE 90 PSI MAXIMUM

REF #	PART #	DESCRIPTION	QTY	REF #	PART #	DESCRIPTION	QTY
1	6799L01	CAP SCREW	4	24	6799L24	CYLINDER	1
2	6799L02	SPRING WASHER	8	25	6799L25	PIN	1
3	6799L03	HAMMER CASE	1	26	6799L26	REAR COVER GASKET	1
4	6799L04	D HANDLE	1	27	6799L27A	HANDLE ASSEMBLY	1
5	6799L05	HEX SCREW	4	28	6799L28	PIN	1
6	6799L06	SPRING WASHER	4	29	6799L29	HEX SCREW	1
7	6799L07	HAMMER CASE GASKET	1	30	6799L30	O-RING	1
8	6799L08	O-RING	1	31	6799L31	VALVE BUSHING	1
9	6799L09	BUSHING	1	32	6799L32	O-RING	1
10	6799L10	SOCKET RETAINING RING	1	33	6799L33	FORWARD AND REVERSE VALVE	1
11	6799L11	O-RING	1	34	6799L34	BALL	1
12	6799L12	ANVIL LONG	1	35	6799L35	SPRING	1
12A	6799L12A	ANVIL SHORT (NOT SHOWN)	1	36	6799L36	THROTTLE BUSHING	1
13	6799L13	HAMMER BUSHING	1	37	6799L37	THROTTLE VALVE PIN	1
14	6799L14	HAMMER	1	38	6799L38	THROTTLE VALVE	1
15	6799L15	CAM	1	39	6799L39	INLET SPRING	1
16	6799L16	HAMMER CAGE	1	40	6799L40	O-RING	1
17	6799L17	BEARING	1	41	6799L41	AIR INLET	1
18	6799L18	HOUSING	1	42	6799L42	AIR INLET SCREEN	1
19	6799L19	BEARING	2	44	6799L44	HEX SCREW	4
20	6799L20	END PLATE	2	45	6799L45	PIN	1
21	6799L21	ROTOR BLADES (SET OF 6)	1set	46	6799L46	PIN	1
22	6799L22	ROTOR	1	47	6799L47	TRIGGER	1
23	6799L23	PIN	2				

505 N. Railroad Ave. 33435
P.O. Box 1117 33425
Boynton Beach, FL

FOR WARRANTY INFORMATION &
WARRANTY REGISTRATION VISIT

www.taylorpneumatic.com

Ph. (561)732-1111
Fax. (561)731-4412
Toll Free (800) 805-8665