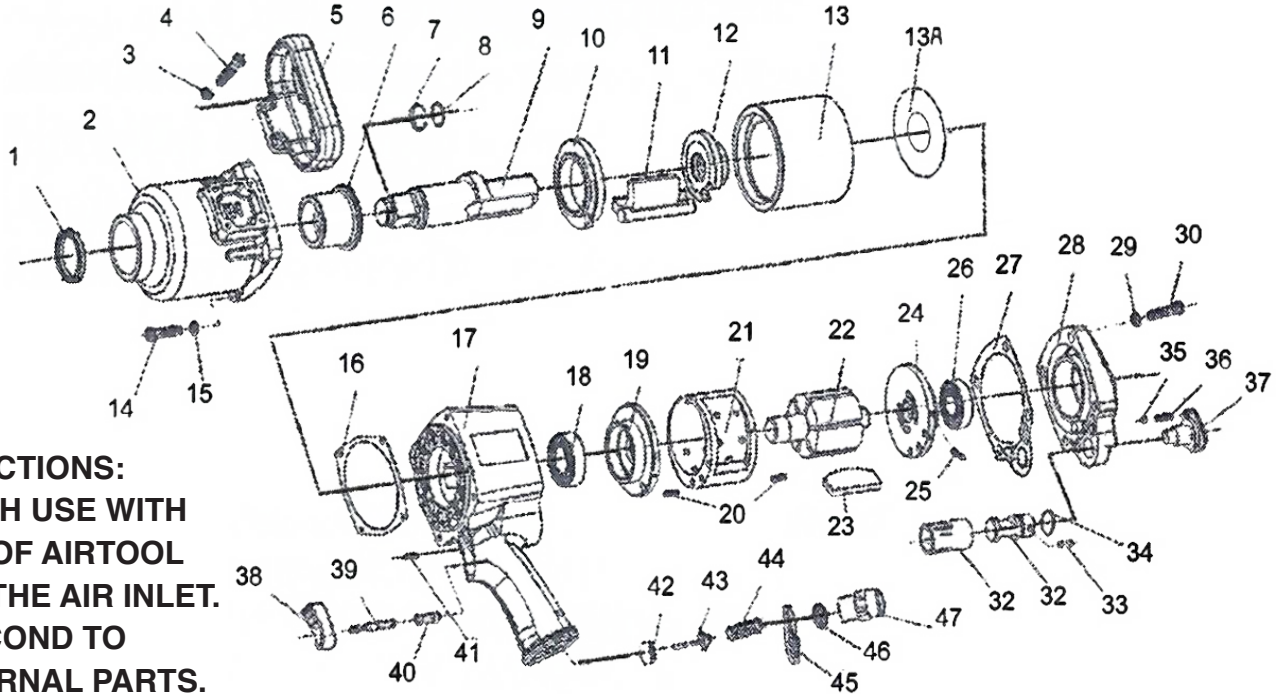


T-6796 / T-6796-6

1" SUPER DUTY IMPACT WRENCH



OILING INSTRUCTIONS:
OIL AFTER EACH USE WITH
A FEW DROPS OF AIRTOOL
OIL THROUGH THE AIR INLET.
RUN FOR 1 SECOND TO
COAT ALL INTERNAL PARTS.

USE 90 PSI MAXIMUM

REF #	PART #	DESCRIPTION	QTY	REF #	PART #	DESCRIPTION	QTY
1	679601	O-RING	1	24	679624	REAR END PLATE	1
2	679602	HAMMER CASE	1	25	679625	END PLATE PIN	1
3	679603	SPRING WASHER	4	26	679626	REAR BEARING	1
4	679604	SCREW	4	27	679627	BACK COVER GASKET	1
5	679605	HANDLE	1	28	679628	BACK COVER	1
6	679606	BUSHING	1	29	679629	SPRING WASHER	1
7	679607	RETAINER RING	1	30	679630	SCREW	1
8	679608	O-RING	1	31	679631	REVERSE VALVE BUSHING	1
9	679609	ANVIL (SHORT)	1	32	679632	REVERSE VALVE	1
9A	679609A	ANVIL (LONG)	1	33	679633	SCREW	1
10	679610	HAMMER CAGE LINING	1	34	679634	O-RING	1
11	679611	HAMMER	1	35	679635	STEEL BALL	1
12	679612	CAM	1	36	679636	SPRING	1
13	679613	HAMMER CAGE	1	37	679637	REVERSE KNOB	1
13A	679613A	WASHER	1	38	679638	TRIGGER	1
14	679614	SCREW	4	39	679639	TRIGGER PIN	1
15	679615	SPRING WASHER	8	40	679640	BUSHING	1
16	679616	HAMMER CASE GASKET	1	41	679641	SPRING PIN	1
17	679617	HOUSING	1	42	679642	THROTTLE VALVE SEAT	1
18	679618	FRONT BEARING	1	43	679643	VALVE STEM	1
19	679619	FRONT END PLATE	1	44	679644	SPRING	1
20	679620	LOCK PIN	2	45	679645	EXHAUST COVER	1
21	679621	CYLINDER	1	46	679646	FILTER	1
22	679622	ROTOR	1	47	679647	AIR INLET	1
23	679623	ROTOR BLADE (6 PER SET)	1set				

505 N. Railroad Ave. 33435
P.O. Box 1117 33425
Boynton Beach, FL

FOR WARRANTY INFORMATION &
WARRANTY REGISTRATION VISIT

www.taylorpneumatic.com

Ph. (561)732-1111
Fax. (561)731-4412
Toll Free (800) 805-8665