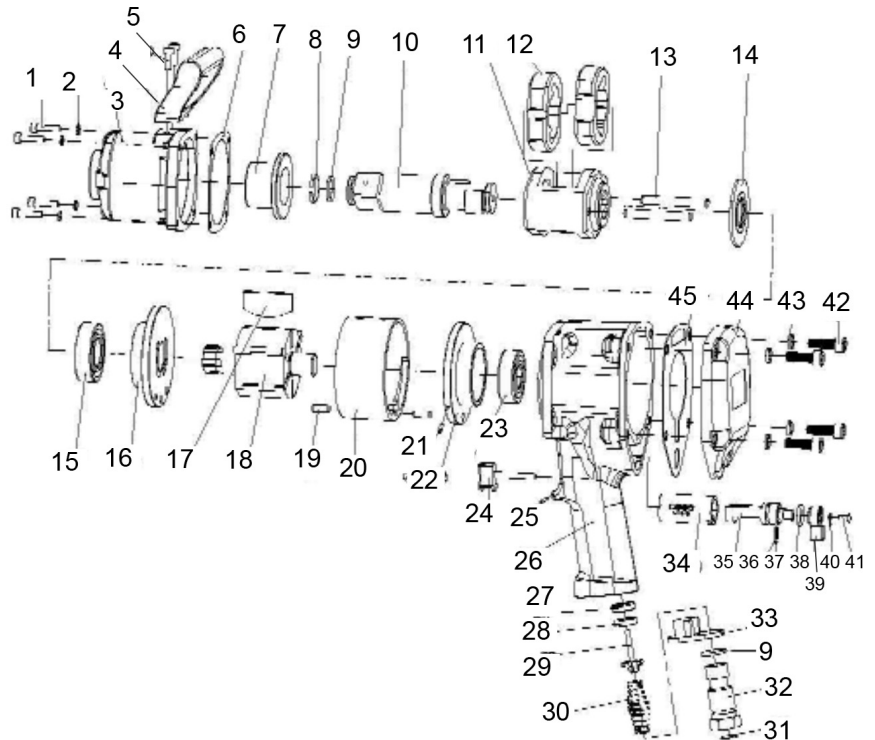


T-6794

1" SUPER DUTY IMPACT WRENCH



OILING INSTRUCTIONS:
OIL AFTER EACH USE WITH
A FEW DROPS OF AIRTOOL
OIL THROUGH THE AIR INLET.
RUN FOR 1 SECOND TO
COAT ALL INTERNAL PARTS.

USE 90 PSI MAXIMUM

REF #	PART #	DESCRIPTION	QTY	REF #	PART #	DESCRIPTION	QTY
1	679401	HEX BOLT	4	23	679423	BEARING	1
2	679402	WASHER	4	24	679424	TRIGGER	1
3	679403	HAMMER CASE	1	25	679425	PIN	1
4	679404	D HANDLE	1	26	679426	HANDLE	1
5	679405	HEX BOLT	2	27	679427	INLET GASKET	1
6	679406	GASKET	1	28	679428	RUBBER GASKET	1
7	679407	ANVIL BUSHING	1	29	679429	INLET VALVE	1
8	679408	ANVIL COLLAR	1	30	679430	INLET SPRING	1
9	679409	O-RING	1	31	679431	AIR INLET SCREEN	1
10	679410	ANVIL (SHORT)	1	32	679432	AIR INLET	1
10	6794L10	ANVIL (LONG)	1	33	679433	PLASTIC COVER	1
11	679411	HAMMER CAGE	1	34	679434	THROTTLE BUSHING	1
12	679412	HAMMER	2	35	679435	THROTTLE VALVE	1
13	679413	HAMMER PIN	2	36	679436	SPRING	1
14	679414	WASHER	1	37	679437	STEEL BALL	1
15	679415	BEARING	1	38	679438	O-RING	1
16	679416	FRONT END PLATE	1	39	679439	REGULATOR/REV. VALVE	1
17	679417	ROTOR BLADE (SET OF 6)	1set	40	679440	GASKET	1
18	679418	ROTOR	1	41	679441	SCREW	1
19	679419	PIN	2	42	679442	HEX BOLT	4
20	679420	CYLINDER	1	43	679443	LOCK WASHER	4
21	679421	PIN	1	44	679444	BACK COVER	1
22	679422	REAR END PLATE	1	45	679445	GASKET	1

505 N. Railroad Ave. 33435
P.O. Box 1117 33425
Boynton Beach, FL

SEE MORE OF OUR CATALOG AT
www.taylorpneumatic.com

Ph. (561)732-1111
Fax. (561)731-4412
Toll Free (800) 805-8665

JULY 2020 / ALL RIGHTS RESERVED / COPYRIGHT 2020