

T-6768R,RK

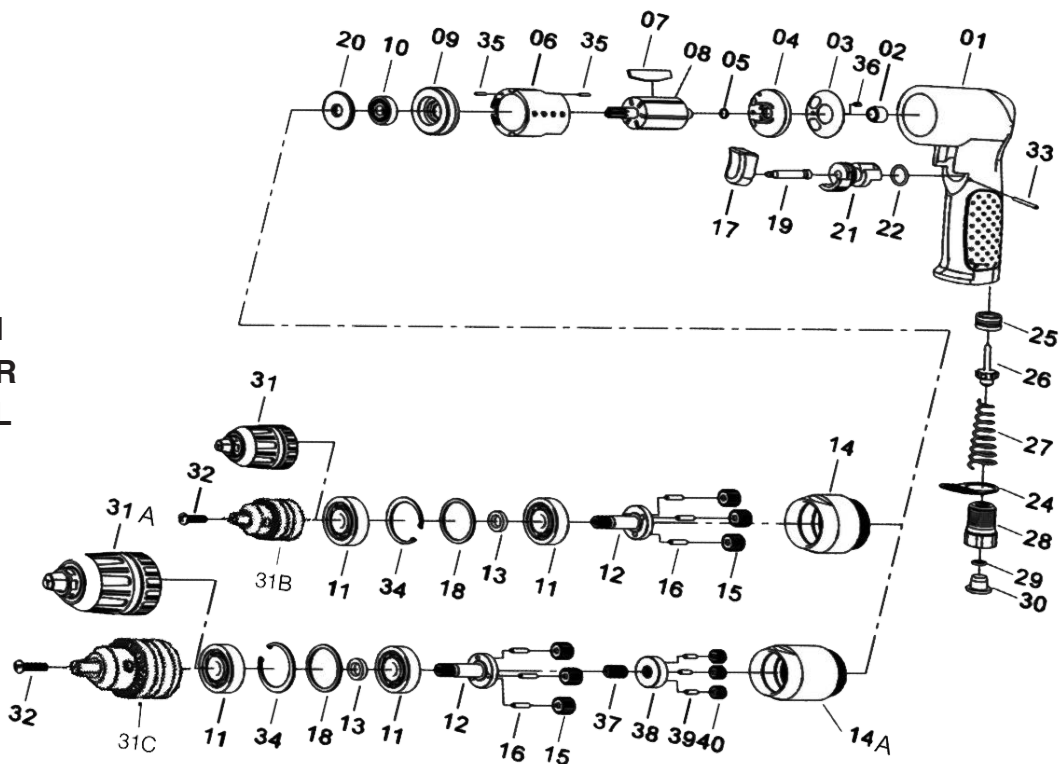
3/8" REVERSIBLE DRILL

T-6768HR,HRK

1/2" REVERSIBLE DRILL



OILING INSTRUCTIONS:
OIL AFTER EACH USE
WITH A FEW DROPS OF
AIRTOOL OIL THROUGH
THE AIR INLET. RUN FOR
1 SECOND TO COAT ALL
INTERNAL PARTS.



USE 90 PSI MAXIMUM

REF #	PART #	DESCRIPTION	QTY	REF #	PART #	DESCRIPTION	QTY
1	6768R01	MOTOR HOUSING	1	22	6768R22	O-RING	1
2	6768R02	NEEDLE BEARING	1	24	6768R24	EXHAUST DEFLECTOR	1
3	6768R03	END PLATE GASKET	1	25	6768R25	THROTTLE VALVE SEAT	1
4	6768R04	REAR END PLATE	1	26	6768R26	THROTTLE VALVE	1
5	6768R05	REAR ROTOR RETAINER	1	27	6768R27	THROTTLE VALVE SPRING	1
6	6768R06	CYLINDER	1	28	6768R28	INLET BUSHING	1
7	6768R07	ROTOR BLADE (6 PER SET)	1set	29	6768R29	AIR STRAINER	1
8	6768R08	ROTOR	1	30	6768R30	COVER	1
9	6768R09	FRONT END PLATE	1	31	T-7788-KC	3/8" KEYLESS CHUCK	1
10	6768R10	BEARING	1	31A	T-7788HR-KCN	1/2" KEYLESS CHUCK	1
11	6768R11	BEARING	2	31B	T-7788-C	3/8" CHUCK & KEY	1
12	6768R12	SPINDLE	1	31C	T-7788HR-C	1/2" CHUCK & KEY	1
13	6768R13	INNER BEARING SPINDLE	1	32	6768R32	CHUCK SCREW	1
14	6768R14	GEAR CASE	1	33	6768R33	SPRING PIN	1
14A	6768R14A	GEAR CASE	1	34	6768R34	RETAINING RING	1
15	6768R15	PLANET GEAR	3	35	6768R35	CYLINDER PIN	2
16	6768R16	GEAR PIN	3	36	6768R36	SPRING PIN	1
17	6768R17	TRIGGER	1	37	6768R37	CENTER GEAR	1
18	6768R18	OUTER BEARING SPACER	1	38	6768R38	GEAR HEAD	1
19	6768R19	TRIGGER SHAFT	1	39	6768R39	PIN	3
20	6768R20	BEARING SUPPORT	1	40	6768R40	GEAR	3
21	6768R21	REVERSE SWITCH	1				

505 N. Railroad Ave. 33435
 P.O. Box 1117 33425
 Boynton Beach, FL

FOR WARRANTY INFORMATION &
 WARRANTY REGISTRATION VISIT

www.taylorpneumatic.com

Ph. (561)732-1111
 Fax. (561)731-4412
 Toll Free (800) 805-8665