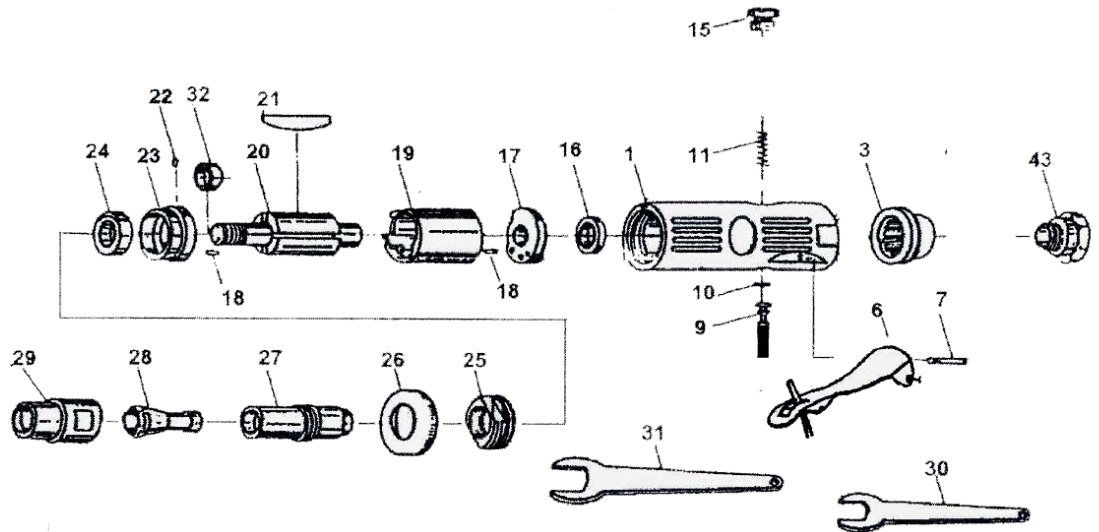


# T-6758R

## 1/4" Die Grinder



**OILING  
INSTRUCTIONS:**  
OIL AFTER EACH  
USE WITH A FEW  
DROPS OF  
AIRTOOL OIL  
THROUGH THE AIR  
INLET. RUN  
FOR 1 SECOND TO  
COAT ALL INTERNAL  
PARTS



### USE 90 PSI MAXIMUM

Ref #	Part #	Description	Qty.	Ref #	Part #	Description	Qty.
1	6759R01	Housing	1	23	6758R23	Front Plate	1
3	6759R03	Exhaust Deflector	1	24	6759R24	Bearing	1
6	6759R06	Lever	1	25	6758R25	Bearing Cap	1
7	6759R07	Pin	1	26	6758R26	Nut	1
9	6759R09	Valve	1	27	6758R27	Spindle	1
10	6759R10	O-Ring	1	28	T-7504	1/4" Collet	1
11	6759R11	Spring	1	28A	T-7508	1/8" Collet	1
15	6759R15	Cap	1	29	6759R29	Clamp Nut	1
16	6759R16	Bearing	1	30	6759R30	Wrench	1
17	6759R17	Rear End Plate	1	31	6759R31	Wrench	1
18	6759R18	Ball	2	32	6759R32	Bushing	1
19	6759R19	Cylinder	1	43	6759R43	Air Inlet	1
20	6759R20	Rotor	1				
21	6759R21	Rotor Blade ( 4 per set )	1 set				
22	6759R22	Ball	1				

505 N. Railroad Ave. 33435  
P.O. Box 1117 33425  
Boynton Beach, Florida

FOR WARRANTY INFORMATION &  
WARRANTY REGISTRATION VISIT

[www.taylorpneumatic.com](http://www.taylorpneumatic.com)

05/23 / ALL RIGHTS RESERVED / COPYRIGHT 2023

Ph. (561) 732-1111  
Fax (561) 731-4412  
Toll Free 800-805-8665