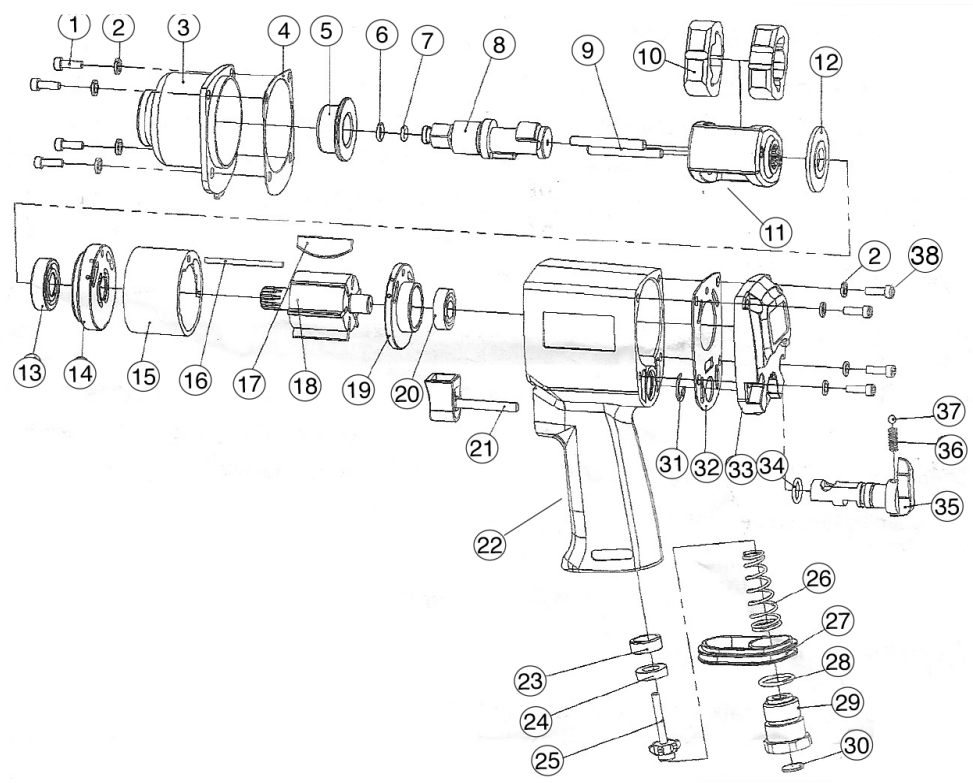


# MINI IMPACT WRENCHES

## T-6739 3/8" IMPACT WRENCH

## T-6749 1/2" IMPACT WRENCH



**OILING INSTRUCTIONS:**  
**OIL AFTER EACH USE WITH**  
**A FEW DROPS OF AIRTOOL**  
**OIL THROUGH THE AIR INLET.**  
**RUN FOR 1 SECOND TO**  
**COAT ALL INTERNAL PARTS.**

**USE 90 PSI MAXIMUM**

REF #	PART #	DESCRIPTION	QTY
1	673901	HEX SCREW	4
2	673902	WASHER	8
3	673903	HAMMER CASE	1
4	673904	GASKET	1
5	673905	ANVIL BUSHING	1
6	673906	ANVIL COLLAR	1
7	673907	O-RING	1
8	673908	ANVIL 3/8"	1
8	674908	ANVIL 1/2"	1
9	673909	HAMMER PIN	2
10	673910	HAMMER	2
11	673911	HAMMER CAGE	1
12	673912	WASHER	1
13	673913	BEARING	1
14	673914	FRONT END PLATE	1
15	673915	CYLINDER	1
16	673916	PIN	1
17	673917	ROTOR BLADES (SET OF 6)	1set
18	673918	ROTOR	1
19	673919	REAR END PLATE	1

REF #	PART #	DESCRIPTION	QTY
20	673920	BEARING	1
21	673921	TRIGGER	1
22	673922	HANDLE	1
23	673923	INLET GASKET	1
24	673924	RUBBER GASKET	1
25	673925	INLET VALVE	1
26	673926	INLET SPRING	1
27	673927	PLASTIC COVER	1
28	673928	O-RING	1
29	673929	AIR INLET	1
30	673930	AIR INLET SCREEN	1
31	673931	C-CLIP	1
32	673932	GASKET	1
33	673933	BACK COVER	1
34	673934	O-RING	1
35	673935	REGULATOR KNOB	1
36	673936	SPRING	1
37	673937	STEEL BALL	1
38	673938	HEX SCREW	4

505 N. Railroad Ave. 33435  
P.O. Box 1117 33425  
Boynton Beach, FL

FOR WARRANTY INFORMATION &  
WARRANTY REGISTRATION VISIT  
[www.taylorpneumatic.com](http://www.taylorpneumatic.com)

Ph. (561)732-1111  
Fax. (561)731-4412  
Toll Free (800) 805-8665