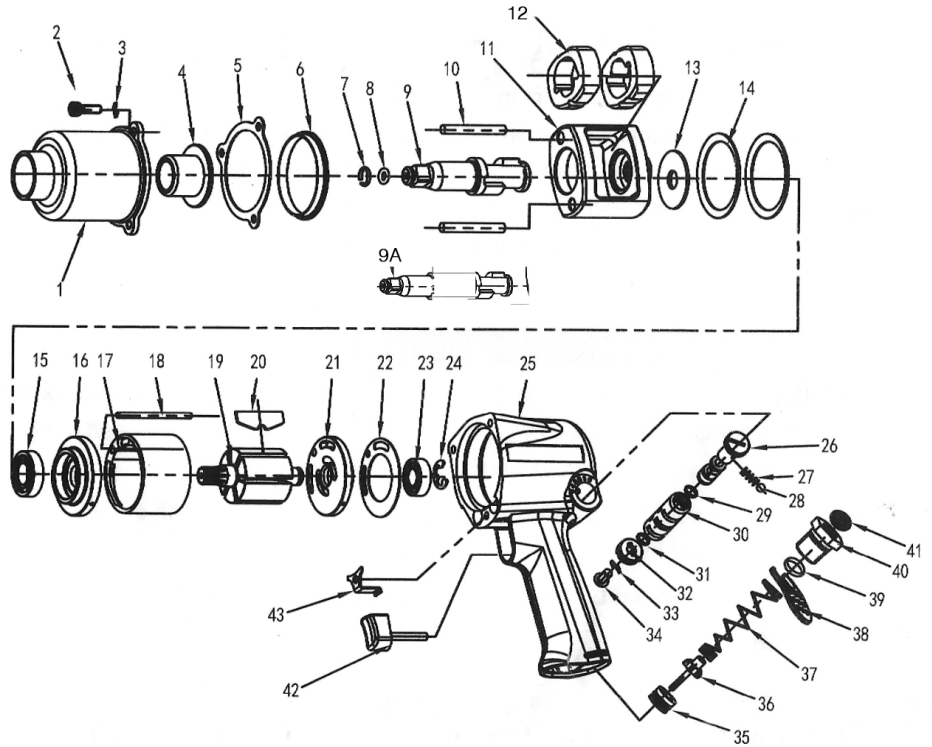


T-6231 1/2" IMPACT WRENCH

T-6231L 1/2" IMPACT WRENCH

W/ EXT. ANVIL



OILING INSTRUCTIONS:
OIL AFTER EACH USE WITH
A FEW DROPS OF AIRTOOL
OIL THROUGH THE AIR INLET.
RUN FOR 1 SECOND TO
COAT ALL INTERNAL PARTS.

USE 90 PSI MAXIMUM

REF #	PART #	DESCRIPTION	QTY	REF #	PART #	DESCRIPTION	QTY
1	623101	HAMMER CASE	1	22	623122	REAR GASKET	1
2	623102	CAP SCREW	3	23	623123	REAR BEARING	1
3	623103	SPRING WASHER	3	24	623124	REAR BEARING RETAINER	1
4	623104	BUSHING	1	25	623125	MOTOR HOUSING	1
5	623105	GASKET	1	26	623126	REVERSE VALVE	1
6	623106	HAMER CASE PILOT	1	27	623127	REVERSE VALVE SPRING	1
7	623107	SOCKET RETAINING RING	1	28	623128	REVERSE VALVE BALL	1
8	623108	SOCKET RETAINER O-RING	1	29	623129	O-RING	1
9	623109	ANVIL	1	30	623130	REVERSE VALVE BUSHING	1
9A	623109A	EXTENDED ANVIL	1	31	623131	O-RING	1
10	623110	HAMMER PIN	2	32	623132	REVERSE VALVE KNOB	1
11	623111	HAMMER CAGE	1	33	623133	SPRING WASHER	1
12	623112	HAMMER	2	34	623134	REVERSE VALVE SCREW	1
13	623113	REAR WASHER	1	35	623135	THROTTLE VALVE SEAT	1
14	623114	MOTOR CLAMP WASHER	2	36	623136	THROTTLE VALVE	1
15	623115	FRONT ROTOR BEARING	1	37	623137	THROTTLE VALVE SPRING	1
16	623116	FRONT END PLATE	1	38	623138	EXHAUST DEFLECTOR	1
17	623117	CYLINDER	1	39	623139	O-RING	1
18	623118	CYLINDER PIN	1	40	623140	INLET BUSHING	1
19	623119	ROTOR	1	41	623141	FILTER	1
20	623120	ROTOR BLADES (6 PER SET)	1set	42	623142	TRIGGER	1
21	623121	REAR END PLATE	1	43	623143	TRIGGER RETAINER	1

505 N. Railroad Ave. 33435
P.O. Box 1117 33425
Boynton Beach, FL

FOR WARRANTY INFORMATION &
WARRANTY REGISTRATION VISIT

www.taylorpneumatic.com

Ph. (561)732-1111
Fax. (561)731-4412
Toll Free (800) 805-8665