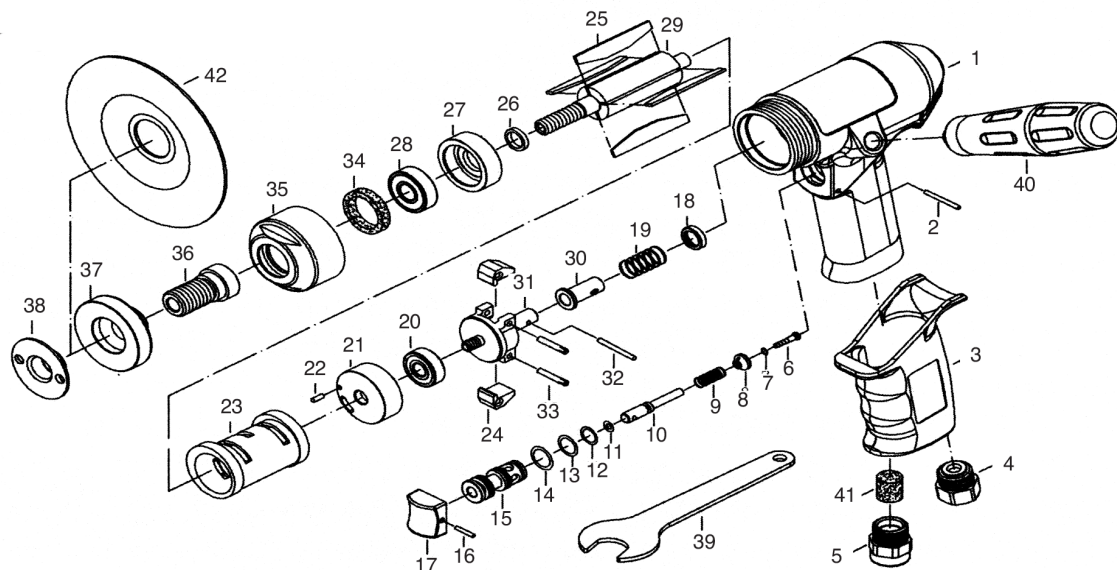


T-5550 5" SANDER 11,000 RPM



**OILING INSTRUCTIONS:
OIL AFTER EACH USE
WITH A FEW DROPS OF
AIRTOOL OIL THROUGH
THE AIR INLET. RUN FOR
1 SECOND TO COAT ALL
INTERNAL PARTS.**

USE 90 PSI MAXIMUM

REF #	PART #	DESCRIPTION	QTY	REF #	PART #	DESCRIPTION	QTY
1	554001	HANDLE	1	23	554023	CYLINDER	1
2	554002	PIN	1	24	555024	GOVERNOR WEIGHT	2
3	554003	RUBBER GRIP	1	25	554025	ROTOR BLADE (4 PER SET)	1set
4	554004	AIR INLET	1	26	554026	SPACER	1
5	555005	EXHAUST	1	27	554027	FRONT END PLATE	1
6	554006	VALVE STEM	1	28	554028	BEARING	1
7	554007	O-RING	1	29	555029	ROTOR	1
8	554008	VALVE STEM BUSHING W/ O-RING	1	30	555030	GOVERNOR VALVE	1
9	554009	SPRING	1	31	555031	GOVERNOR CAGE	1
10	554010	VALVE STEM	1	32	555032	PIN	1
11	554011	O-RING	1	33	555033	PIN	2
12	554012	O-RING	1	34	555034	FELT RING	1
13	554013	O-RING	1	35	555035	COVER	1
14	554014	O-RING	1	36	555036	ADAPTER	1
15	554015	BUSHING	1	37	555037	PAD HUB	1
16	554016	PIN	1	38	555038	FLANGE NUT	1
17	554017	TRIGGER	1	39	555039	OPEN END WRENCH	1
18	555018	GOVERNOR HOLDER	1	40	554040	AUXILLARY HANDLE	1
19	555019	SPRING	1	41	554041	SILENCER	1
20	554020	BEARING	1	42	555042	4-1/2" BACKUP PAD	1
21	554021	REAR END PLATE	1	43	555043	WRENCH	1
22	554022	PIN	1				