

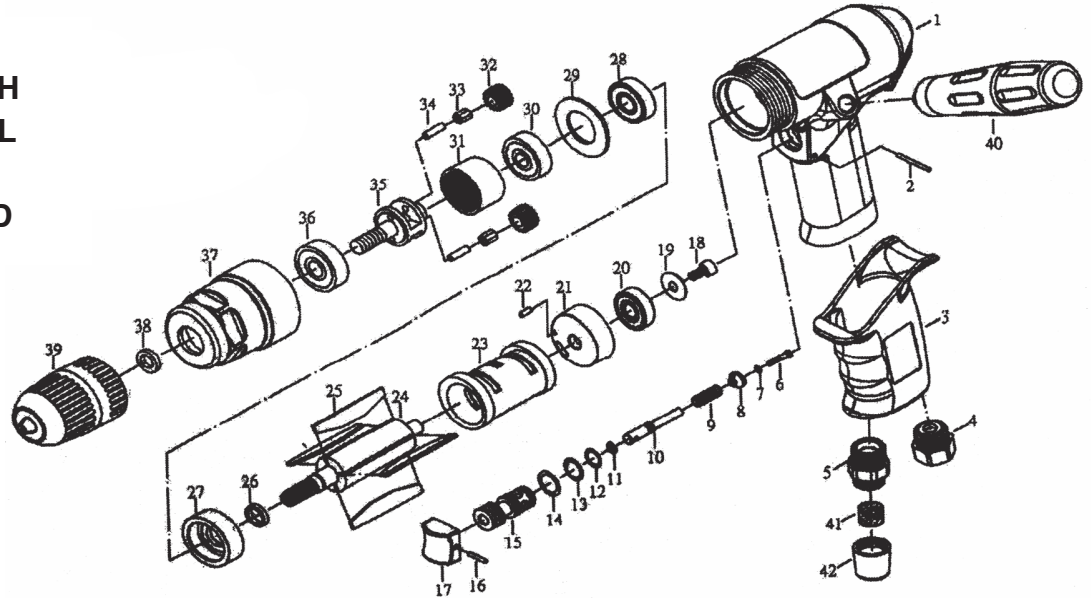
T-5540 3/8"

2 SPEED 4000 RPM DRILL

T-5540K / T-5540SPC



OILING INSTRUCTIONS:
OIL AFTER EACH USE WITH
A FEW DROPS OF AIRTOOL
OIL THROUGH THE AIR
INLET. RUN FOR 1 SECOND
TO COAT ALL INTERNAL
PARTS.



USE 90 PSI MAXIMUM

REF #	PART #	DESCRIPTION	QTY	REF #	PART #	DESCRIPTION	QTY
1	554001	HANDLE	1	23	554023	CYLINDER	1
2	554002	PIN	1	24	554024	ROTOR	1
3	554003	RUBBER GRIP	1	25	554025	ROTOR BLADE (4 PER SET)	1set
4	554004	AIR INLET	1	26	554026	SPACER	1
5	554005	EXHAUST	1	27	554027	FRONT END PLATE	1
6	554006	VALVE STEM	1	28	554028	BEARING	1
7	554007	O-RING	1	29	554029	WASHER	1
8	554008	VALVE STEM BUSHING W/ O-RING	1	30	554030	BEARING	1
9	554009	SPRING	1	31	554031	RING GEAR	1
10	554010	VALVE STEM	1	32	554032	IDLER GEAR	2
11	554011	O-RING	1	33	554033	NEEDLE BEARING	2
12	554012	O-RING	1	34	554034	PIN	2
13	554013	O-RING	1	35	554035	GEAR PLATE	1
14	554014	O-RING	1	36	554036	BEARING	1
15	554015	BUSHING	1	37	554037	CLAMP NUT	1
16	554016	PIN	1	38	554038	SPACER	1
17	554017	TRIGGER	1	39	T-7768R-SPC	3/8" CHECK AND KEY	
18	554018	SCREW	1	39B	T-7788-KC	COMPOSITE KEYLESS	
19	554019	WASHER	1			CHUCK	
20	554020	BEARING	1	40	554040	AUXILLARY HANDLE	1
21	554021	REAR END PLATE	1	41	554041	SILENCER	1
22	554022	PIN	1	42	554042	SLEEVE	1

505 N. Railroad Ave. 33435
P.O. Box 1117 33425
Boynton Beach, FL

SEE MORE OF OUR CATALOG AT
www.taylorpneumatic.com

AUGUST 2020 / ALL RIGHTS RESERVED / COPYRIGHT 2020

Ph. (561)732-1111
Fax. (561)731-4412
Toll Free (800) 805-8665