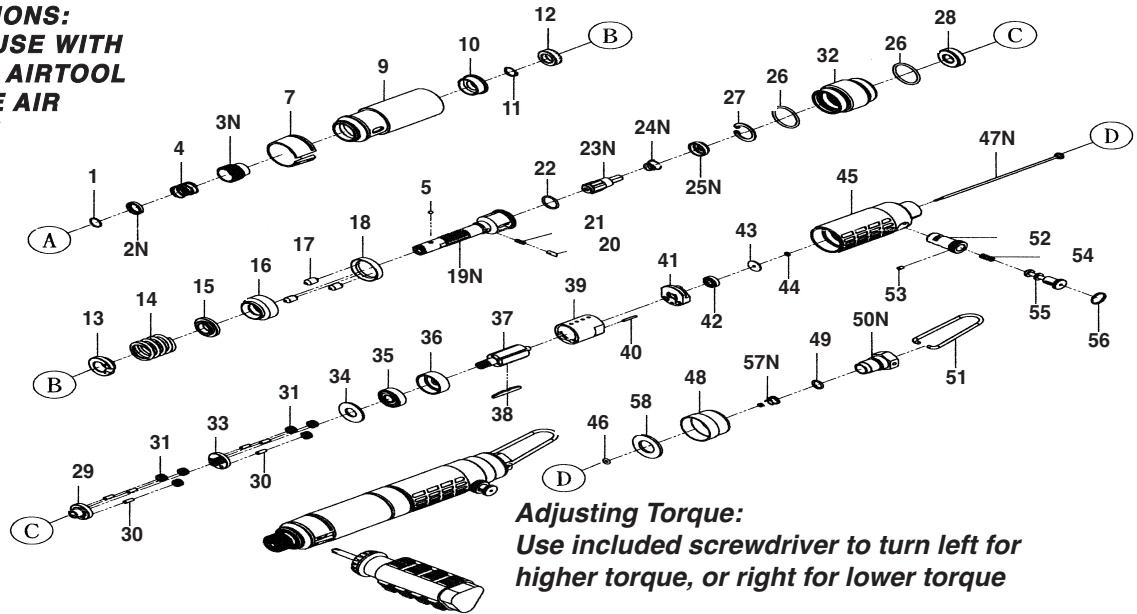


T-2430EX Straight Production Screwdriver



OILING INSTRUCTIONS:
OIL AFTER EACH USE WITH
1/2 TEASPOON OF AIRTOOL
OIL THROUGH THE AIR
INLET. RUN FOR 1
SECOND TO COAT
ALL INTERNAL
PARTS



USE 90 PSI MAXIMUM

Ref #	Part #	Description	Qty.	Ref #	Part #	Description	Qty.
1	2430EX01	C-Ring	1	32	2430EX32	Gear Case	1
2N	2430EX02N	Retaining Washer	2	33	2430EX33	Cage	1
3N	2430EX03N	Ball Retainer	1	34	2430EX34	Washer	1
4	2430EX04	Spring	1	35	2430EX35	Bearing	1
5	2430EX05	Ball	1	36	2430EX36	Front End Plate	1
7	2430EX07	Cover	1	37	2430EX37	Rotor	1
9	2430EX09	Front Housing	1	38	2430EX38	Rotor Blades (set of 5)	1
10	2430EX10	Bushing	1	39	2430EX39	Cylinder	1
11	2430EX11	C-Ring	1	40	2430EX40	Pin	1
12	2430EX12	Adjusting Nut	1	41	2430EX41	Rear End Plate	1
13	2430EX13	Adjusting Nut Set	1	42	2430EX42	Bearing	1
14	2430EX14	Spring	1	43	2430EX43	Washer	1
15	2430EX15	Spring Set	1	44	2430EX44	O-Ring	1
16	2430EX16	Spring Case End	1	45	2430EX45	Handle	1
17	2430EX17	Pin	3	46	2430EX46	O-Ring	1
18	2430EX18	Front Bearing Case	1	47N	2430EX47N	Valve Stem	1
19N	2430EX19N	Clutch Spindle	1	48	2430EX48	Exhaust Cover	1
20	2430EX20	Switch Pin	1	49	2430EX49	O-Ring	1
21	2430EX21	Spring	1	50N	2430EX50N	Air Inlet	1
22	2430EX22	O-Ring	1	51	2430EX51	Bail	1
23N	2430EX23N	Eccentric Rod	1	52	2430EX52	Reverse Bushing	1
24N	2430EX24N	Spring	1	53	2430EX53	Pin	1
25N	2430EX25N	Dog	1	54	2430EX54	Spring	1
26	2430EX26	O-Ring	2	55	2430EX55	Reverse Valve	1
27	2430EX27	C-Ring	1	56	2430EX56	Retainer	1
28	2430EX28	Bearing	1	57N	2430EX57N	Spring	1
29	2430EX29	Cage	1	58	2430EX58	Muffler	1
30	2430EX30	Gear Pin	6				
31	2430EX31	Gear	6				

505 N. Railroad Ave. (33435)
P.O. Box 1117 (33425)
Boynton Beach, Florida

FOR WARRANTY INFORMATION &
WARRANTY REGISTRATION VISIT
www.taylorpneumatic.com

Ph. (561) 732-1111
Fax (561) 731-4412
Toll Free 800-805-8665