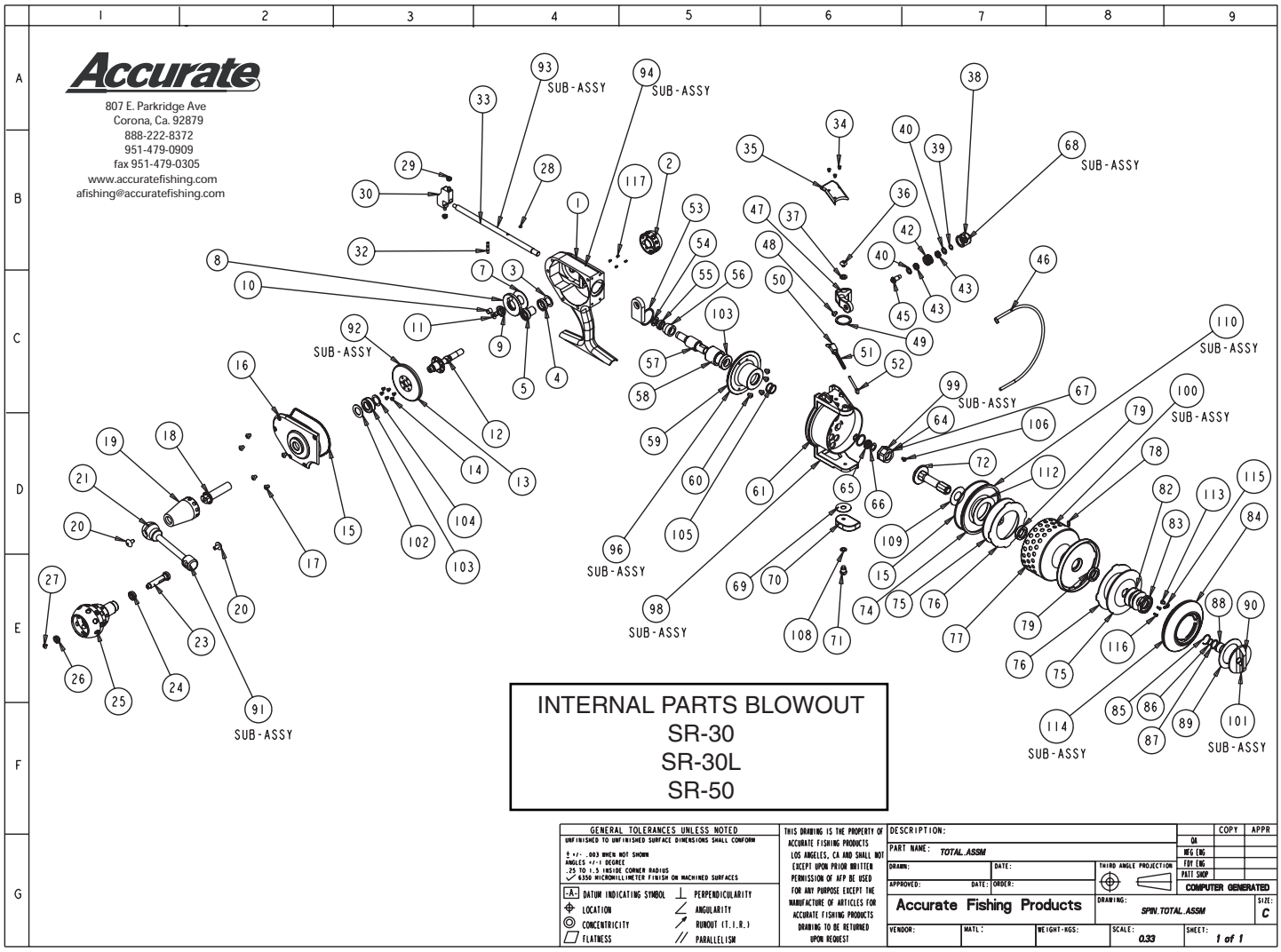


Accurate

807 E. Parkridge Ave
 Corona, Ca. 92879
 888-222-8372
 951-479-0909
 fax 951-479-0305
 www.accuratefishing.com
 afishing@accuratefishing.com



INTERNAL PARTS BLOWOUT
 SR-30
 SR-30L
 SR-50

GENERAL TOLERANCES UNLESS NOTED UNFINISHED TO UNFINISHED SURFACE DIMENSIONS SHALL CONFORM ±.001 - .003 WHEN NOT SHOWN DIMENSION ±.015 GEOMETRIC .25 TO 1.5 INSIDE CORNER RADII .030 MICROMILLIMETER FINISH ON MACHINED SURFACES		THIS DRAWING IS THE PROPERTY OF ACCURATE FISHING PRODUCTS LOS ANGELES, CA AND SHALL NOT BE REPRODUCED OR TRANSMITTED IN ANY FORM OR BY ANY MEANS WITHOUT THE WRITTEN PERMISSION OF AIP. BE USED FOR ANY PURPOSE EXCEPT THE MANUFACTURE OF ARTICLES FOR ACCURATE FISHING PRODUCTS DRAWING TO BE RETURNED UPON REQUEST	DESCRIPTION: PART NAME: TOTAL ASSM DRAWN: DATE: THIRD ANGLE PROJECTION APPROVED: DATE: ORDER: COMPUTER GENERATED Accurate Fishing Products VENDOR: MATERIAL: WEIGHT: HGS: SCALE: 0.33 SHEET: 1 of 1
---	--	---	---

NO.	COMPONENT NAME	QTY	PART#	NO.	COMPONENT NAME	QTY	PART#	NO.	COMPONENT NAME	QTY	PART#
1	SR-30,50 BODY	1	S-3484	48	SR BAIL FRAME SCREW 5-40 X 1/4	1	S-4130	96	SR-30,50 ROLLER CLTCH HSG SUB-ASSY	1	S-3960
2	SR-30,50 HOOD HANDLE SIDE COVER	1	S-3036	49	SR-30,50 BAIL ARM WASHER BEARING SIDE	1	S-3020	98	SR-30 ROTOR SUB-ASSY	1	S-4002
3	SR-30,50 MAIN GEAR SHAFT WASHER	1	S-3004	50	SR ROTOR BAIL CANTER ARM	1	S-4040	98	SR-50 ROTOR SUB-ASSY	1	S-5492
4	SR-30,50 SMALL GEAR SHAFT BEARING	1	S-3972	51	SR-30,50 BAIL SPRING	1	S-4006	99	SR-30,50 ROTOR NUT SUB ASSY	1	S-4008
5	SR-30,50 GEAR SHAFT SMALL GEAR	1	S-3008	52	SR-30,50 BAIL LEVER CANTER PIN	1	S-3086	100	SR-30 SPOOL SUB-ASSY	1	S-3980
7	SR-30,50 BACK MAIN GEAR W/ PIN WASHER	1	S-2996	53	SR-30,50 BODY-HOUSING CLUTCH WASHER 1	1	S-3104	100	SR-50 SPOOL SUB-ASSY	1	S-5452
8	SR-30,50 BACK GEAR W/ PIN	1	S-2994	54	SR-30,50 BODY BEARING BUSHING	1	S-3056	101	SR-30,50 PRESET KNOB SUB-ASSY	1	S-3996
9	SR-30,50 BACK GEAR BEARING	1	S-3978	55	SR-30,50 PINION SHAFT BEARING	1	S-3966	102	SR-30,50 MAIN GEAR RUBBER WASHER	1	S-3006
10	SR-30,50 BACK GEAR SLIDE BUSHING	1	S-3108	56	SR-30,50 PINION GEAR	1	S-3726	103	SR-30,50 BODY CVR, CLTCH HSG BEARING	2	S-3974
11	SR 30,50 BACK GEAR SCREW	1	S-4062	57	SR-30,50 PINION GEAR SHAFT	1	S-2524	104	SR MAIN GEAR SHIM WASHER .010 THICK	1	S-4238
12	SR-30 MAIN GEAR SHAFT 6:1	1	S-4032	58	SR-30,50 ROLLER CLUTCH BEARING	1	S-3908	104	SR MAIN GEAR SHIM WASHER .005 THICK	1	S-4236
12	SR-30,50 MAIN GEAR SHAFT 4:1	1	S-4914	59	SR-30,50 ROLLER CLUTCH HOUSING	1	S-2530	104	SR MAIN GEAR SHIM WASHER .003 THICK	1	S-3090
13	SR-30 MAIN GEAR 6:1	1	S-3010	60	SR-30,50 CLUTCH HOUSING SCREWS	4	L-2016	105	SR PINION GEAR SHAFT-ROTOR WASHER	2	S-3096
13	SR-30,50 MAIN GEAR 4:1	1	S-4540	61	SR-30 ROTOR	1	S-4004	106	SR KEEPER SCREW 4-40 X 1/8	1	B-1800
14	SR-30,50 MAIN GEAR SHAFT SCREWS	5	S-4034	61	SR-50 ROTOR	1	S-5432	108	SR STEEL BAIL ARM SCREW WASHER	1	S-3082
15	SR-30,50 SPOOL CVR / BODY CVR O-RING	2	S-2796	62	SR-30,50 PINION NUT BEARING BUSHING	1	S-3054	109	SR DRAG SHAFT SHIM WASHER	2	S-3118
16	SR-30,50 BODY COVER	1	S-3038	63	SR-30,50 PINION NUT O-RING	1	S-4124	110	SR-30,50 INSIDE SPOOL COVER SUB-ASSY	1	S-3994
17	SR-30,50 BODY COVER SCREWS	5	S-4036	64	SR-30,50 PINION NUT	1	S-3016	112	SR-30,50 INSIDE SPOOL COVER WASHER	1	S-3100
18	SR-30,50 HANDLE ARM DRIVE SHAFT	1	S-3032	65	SR-30,50 PINION ROTOR NUT BEARING	1	S-3976	113	SR CLICKER SPRING SCREW	1	S-4324
19	SR-30,50 HANDLE SHAFT HOOD	1	S-3034	66	SR-30,50 PINION NUT RUBBER WASHER	1	S-3002	114	SPOOL COVER SUB-ASSY	1	S-4464
20	SR HANDLE SCREW -LEFT HAND	2	B-1190	67	SR PINION NUT SCREW	2	S-4136	115	SR SPINNING REEL CLICKER SPRING	1	S-4290
21	SR-30,50 HANDLE ARM	1	S-3024	68	SR-30,50 ROTOR NUT WASHER	1	S-3000				
23	SR-30,50 HANDLE PIN	1	S-4134	69	SR-30,50 BAIL ARM WASHER	1	S-3018				
24	POWER KNOB BEARING BIG	1	S-4288	70	SR-30,50 BAIL ARM STAINLESS STEEL SIDE	1	S-3058				
25	HALLOW POWER KNOB	1	S-3752	71	SR-30,50 SS BAIL ARM -SHOULDER SCREW	1	S-4166				
26	POWER KNOB BEARING SMALL	1	S-4286	72	SR-30,50 DRAG SHAFT	1	S-2340				
27	POWER KNOB PIN SCREW	1	S-4266	74	SR-30,50 INSIDE SPOOL COVER	1	S-3102				
28	SR-30,50 SPOOL SHAFT PIN O-RING	1	S-3476	75	SR-30,50 TITANIUM WASHER	2	S-3532				
29	SR-30,50 SLIDE BEARING	2	S-3968	76	SR-30,50 FIBER DRAG WASHER	2	S-4308				
30	SR-30,50 INTERNAL Z SLIDE	1	S-2794	77	SR-30 SPOOL	1	S-2338				
31	SR-30,50 SPOOL SHAFT ASSM SCREW	1	S-4018	77	SR-50 SPOOL	1	S-5414				
32	SR-30,50 SPOOL SHAFT PIN	1	S-3088	78	SR BOSS ATD SPOOL STUD	1	L-4302				
33	SR-30,50 SPOOL SHAFT	1	S-3094	79	SR SPOOL BEARING	2	L-1366				
34	SR-30,50 ROTOR ARM COVER SCREWS	3	S-4028	82	SR-30,50 DISC SPRING WASHER	3	S-3114				
35	SR-30,50 ROTOR ARM COVER	1	S-4026	83	SR-30,50 DRAG SHAFT NUT	1	S-2344				
35	SR-30,50 ROTOR ARM COVER	1	S-4026	84	SR-30,50 SPOOL COVER	1	S-2386				
36	SR 8-32 X 3/16 T-10 TORX SCREW	1	S-4132	85	BOSS SIDEPLATE FRAME RETAINER	1	B-1052				
37	SR-30,50 BAIL ARM WASHER	1	S-3084	86	SR-30,50 PRESET KNOB SCREW O-RING	1	S-4122				
38	SR-30 BAIL FRAME	1	S-3750	87	SR-30,50 PRESET KNOB SCREW O-RING	1	S-4126				
39	SR-30 BAIL BEARING WASHER	1	S-3050	88	SR-30,50 PRESET KNOB SCREW	1	S-3028				
40	SR-30,50 BAIL BEARING SEAL WASHER	2	S-3022	89	SR-30,50 PRESET RUBBER WASHER	1	S-3026				
42	SR-30,50 BAIL ROLLER	1	S-3048	90	SR-30,50 PRESET KNOB	1	S-3538				
43	SR-30,50 BAIL ROLLER - BEARING	2	S-3970	91	SR-30,50 HANDLE SUB-ASSY	1	S-4012				
45	SR-30,50 BAIL ROLLER SHAFT	1	S-3890	92	SR-30 MAIN GEAR SUB-ASSY 6:1	1	S-4030				
46	SR-30 STAINLESS STEEL BAIL WIRE	1	S-3106	92	SR-30,50 MAIN GEAR SUB-ASSY 4:1	1	S-5004				
46	SR-50 STAINLESS STEEL BAIL WIRE	1	S-5488	93	SR-30 SPOOL SHAFT SUB-ASSY	1	S-4016				
47	SR-30,50 BAIL ARM - ALUMINUM SIDE	1	S-3914	94	SR 30,50 BODY SUB	1	S-4234				